

Concrete Hebel Cladding



FOR SALE

CONCRETE CONSTRUCTION FOR EXTENDED FAMILY

Concrete Hebel Construction & Sea Views. Accommodate the extended family. First time on the market ever this is a rare opportunity to secure a truly exceptional home in one of Orewa's most prestigious and tightly held streets. Known for its upmarket appeal, peaceful surroundings, and quality neighbours, this address offers the ultimate blend of lifestyle and location - all just minutes from the beach, town centre, and motorway access. Amazing sea views can be enjoyed from this uniquely designed home by Visual Statements. Built with solid Hebel concrete construction, this striking home combines timeless design with long-lasting durability. A unique home that offers discerning buyers a chance to own a thoughtfully crafted, personality-filled property that stands out from the rest. Inside, the home's elevated position delivers stunning sea views and an abundance of natural light. Soaring ceilings and a bold, architectural roofline create a sense of space and drama, while the northern aspect looks out over a lush, green reserve - offering both privacy and a beautiful natural backdrop. The flat, low-maintenance garden flows seamlessly off the open-plan kitchen and dining area, making indoor-outdoor entertaining effortless. There's also space and wiring in place for a spa pool, allowing you to enhance the outdoor experience even further. Flexibility is a key feature here. The downstairs master suite includes a kitchenette and its own external access, opening up a range of possibilities for extended family, guests or a separate work-from-home space. The other ground-floor bedroom is ideal as an office and a quiet, productive zone for those needing to work remotely or run a business from home. Practicality hasn't been overlooked - there's a dedicated laundry with direct garden access and a spacious internal garage that includes a workshop area. Under the house, a rainwater tank and pump system provide a sustainable solution for watering the garden or washing the car. This is not just a home - it's a statement. A solid, well-designed property that offers flexibility, flair, and function in equal measure. Whether you're looking to upsize, downsize, or secure a lock-and-leave coastal residence, this home delivers on all fronts. With the auction fast approaching, now is the time to act. Properties of this calibre in such an outstanding location rarely come to market. Contact us today to arrange your private viewing or attend an upcoming open home - this is seaside living at its finest, and it won't last long.

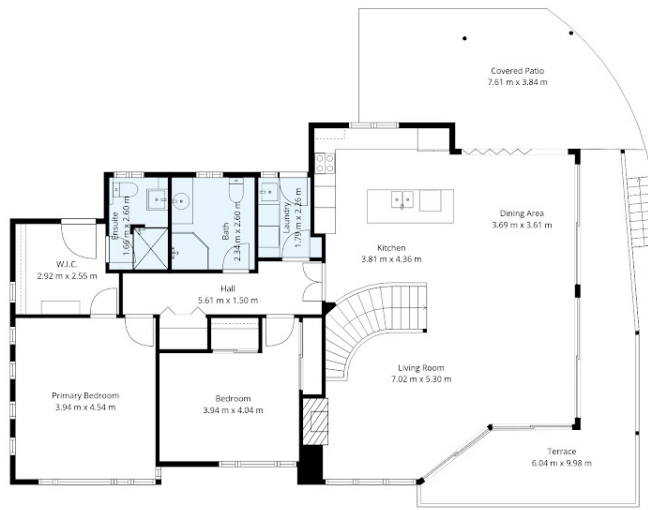
4 BED | 3 BATH | 2 CAR

PRICE:
Asking price \$1,749,000

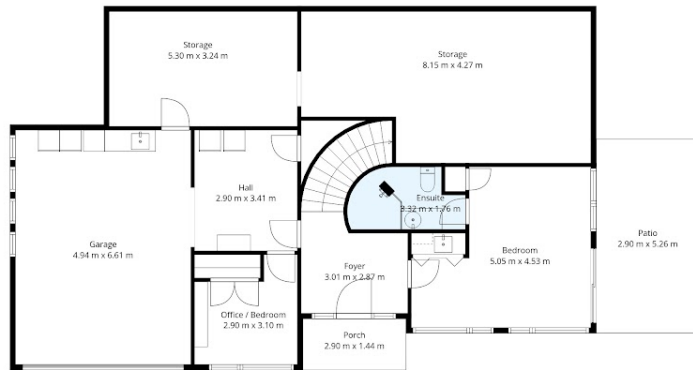
OPEN FOR INSPECTION:
N/A



Rosalind Warren
0212431153
rosalind@rrea.co.nz
www.rrea.co.nz



Floor 2



Floor 1



Plans Are Indicative Only For Marketing Purposes.



Disclaimer: Please note this floor plan is for marketing purposes and is to be used as a guide only. All dimensions are estimates only and may not be exact measurements.