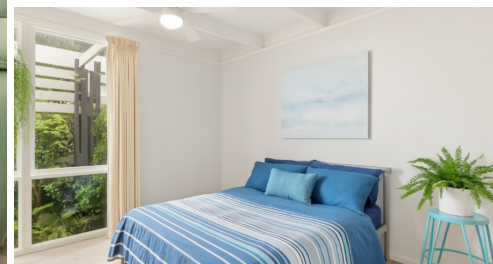
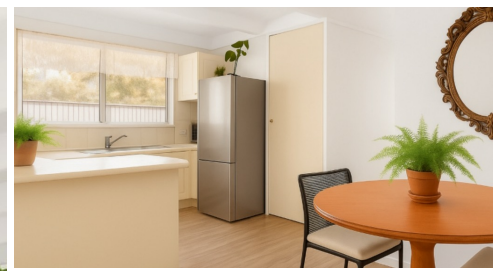


2/3 WYBALENA CRESCENT, TOORMINA, NSW, 2452



**SOLD**

## IF PRIVACY IS IMPORTANT THIS 3 BEDROOM VILLA IS A MUST SEE !!!

This 3 bedroom villa offers easy, low-maintenance living in a fantastic location. Just steps from Toormina Gardens Shopping Centre and a short 500m stroll to beautiful Boambee Creek, you'll also be only a 4-minute drive from the cafes, shops and stunning beaches of Sawtell. This property is easy care throughout, the home features vinyl plank flooring, fresh paint, a modern kitchen and a very functional bathroom. There's nothing left to do — simply move in and enjoy!

The light-filled, open-plan living area flows into the very functional and modern kitchen, which includes electric cooking and tiled benchtops. All three bedrooms are generously sized and easily fit queen beds, the bathroom conveniently close by.

A separate laundry opens out to the private backyard, complete with two garden sheds for handy storage. There's also a single carport at the front for easy access.

One of the real highlights is the covered patio overlooking the neighbouring park — the perfect place to relax and watch the kids or grandkids play.

At a glance:

3 spacious bedrooms

Light-filled open plan living and dining

Updated kitchen with electric cooking

Modern easy care bathroom

Private rear yard with 2 garden sheds

Covered patio with lovely park outlook

**3 BED | 1 BATH | 1 CAR**

**PRICE:**  
\$560,000

**OPEN FOR INSPECTION:**  
N/A



**Cheryl Donaldson**  
**0466037468**  
cheryl@atrealty.com.au  
[www.atrealty.com.au](http://www.atrealty.com.au)