



## FOR SALE

### NATURE-LOVER'S RETREAT WITH ESTABLISHED FOOD FOREST & ABUNDANT WILDLIFE

If you've been dreaming of a peaceful escape surrounded by nature, this stunning 10.48ha (24-acre) bush retreat offers the ultimate tree-change lifestyle. Just 40 minutes from Tewantin and 20 minutes to Kin Kin, this property blends untouched natural beauty with self-sufficiency, tranquillity, and all the comforts of modern living.

Wander through native bushland alive with birdlife and wildlife, explore shaded walking tracks, or relax by the rock-lined creek as it flows through your very own nature sanctuary. With ponds, a seasonal creek, and two dams—one equipped with a pump—the landscape is rich in natural water features and thriving ecosystems.

The charming 3-bedroom home embraces rustic warmth with freshly polished brush box and cypress timber flooring throughout. A cosy combustion stove for heating and cooking plus an electric cooktop, reverse cycle air-conditioning, solar power connected back to the grid, and NBN. Enjoy cooling coastal breezes from the south-east as you unwind on the rear verandah overlooking tall stands of hardwood trees including Messmate and Blue Gum creating a habitat for the local koalas and wildlife population.

For those seeking self-sufficiency, this property is a dream with fruit trees—including mango, cherry, plum, banana and more—are dotted throughout the grounds, complemented by vegetable garden spaces, a nursery and potting shed, plus multiple water tanks for household and garden use.

A 13m x 9m shed and separate lock-up storage/ potential studio, workshop, or creative space options, while a prepared house pad provides the opportunity for a second dwelling if desired. Coonadoo sits within the Gympie Region yet feels very much part of the Noosa Hinterland, with Tewantin, Cooroy and Noosa all within easy reach—making this the ideal blend of peaceful seclusion and convenient access.

Whether you're looking to immerse yourself in nature, live sustainably, or simply enjoy the quiet life, this remarkable wildlife retreat invites you to make it your own and leave your personal mark.

3 BED | 1 BATH | 6 CAR

PRICE:  
\$995,000

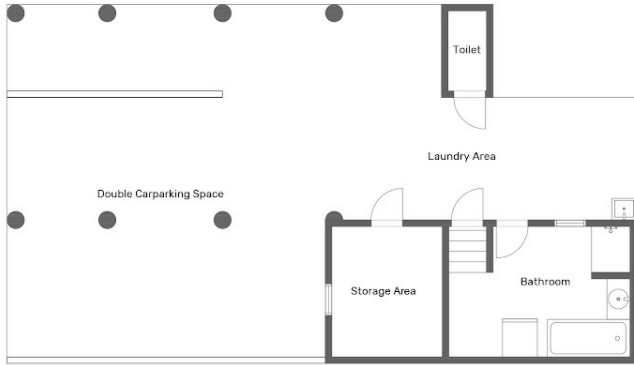
OPEN FOR INSPECTION:  
N/A



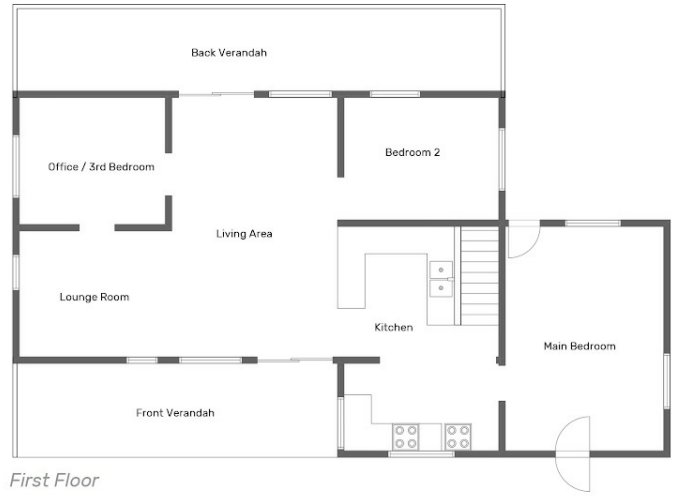
**Wes Farnham**  
0439388015

wes@atrealty.com.au

[wesandkaylenefarnhamrealestate.com](http://wesandkaylenefarnhamrealestate.com)



Ground Floor



First Floor

Stewart road

Floor plan is provided as indicative layout only. Measurements are not available, floor plan is not to scale. No guarantees provided on accuracy. Exterior elements are not in position



Disclaimer: Please note this floor plan is for marketing purposes and is to be used as a guide only. All dimensions are estimates only and may not be exact measurements.