



SOLD

MODERN UNIT IN GROWING BURPENGARY

Two-storey townhouse / unit
Bedrooms: 2
Bathrooms: 1 (plus second toilet downstairs)
Car Spaces: 1 designated parking

Property Highlights

- * Ideally positioned within walking distance to the Burpengary railway station, bus transport and local shopping village
- * Modern, open-plan living space – kitchen with generous storage, combined dining & lounge area with ceiling fan & air-conditioning
- * Downstairs includes the second toilet, offering added convenience and flexibility
- * Upstairs: Two large bedrooms each with built-in wardrobes and ceiling fans;
- * Additional upstairs space currently configured as a work-from-home office with built-in storage — could be repurposed as a third bedroom or study nook.
- * Private outdoor courtyard to the rear, perfect for low-maintenance entertaining or relaxing outdoors under shade.
- * Well maintained in a unit complex, ideal for first-home buyers, investors or those seeking a low-maintenance lifestyle.

Location & Lifestyle

Positioned in the heart of Burpengary (QLD 4505) you'll enjoy:

- * Excellent connectivity via the nearby train station and bus links – commuting to Brisbane or the coast is easy.
- * Local amenities including shopping, cafés, schools and parks all within easy reach.
- * A friendly community and convenient suburban lifestyle, while still being close to major arterial roads and public transport.

Why This Property Stands Out

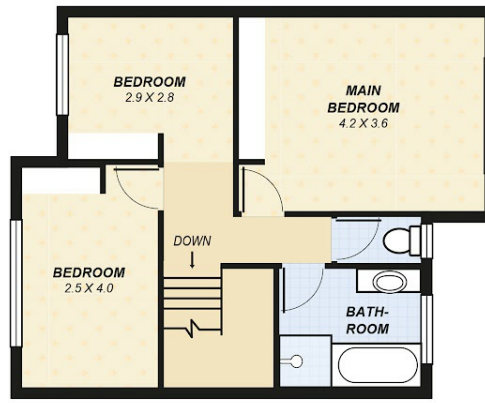
2 BED | 1 BATH | 1 CAR

PRICE:
\$680,000

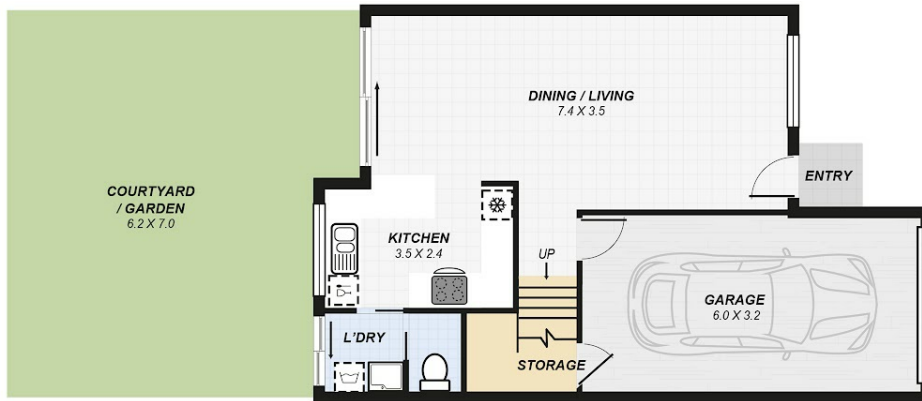
OPEN FOR INSPECTION:
N/A



Troy Merker
0488749937
troy@atrealty.com.au
www.atrealty.com.au



UPPER LEVEL



GROUND LEVEL

Area	m ²
Living:	91
Garage:	19
Total area (approx):	110m ²



15/6 Station Road, Burpangary

DISCLAIMER: This drawing is for illustration purposes only. All measurements are approximate and details intended to be relied upon should be independently verified.

Disclaimer: Please note this floor plan is for marketing purposes and is to be used as a guide only. All dimensions are estimates only and may not be exact measurements.