



FOR SALE

BRAND NEW IN KILBIRNIE - 2 BEDROOMS FROM \$749,000

Located in a prime spot, St Giles Park View is just a short walk to the Kilbirnie CBD, offering convenient access to all essential amenities. It's also only a few minutes' drive to Wellington Airport, Wellington Hospital, and the Wellington CBD, making it an outstanding choice for modern living.

3 x two-bedroom options available varying from 68m² - 76m², with 2 differing layout options, priced from \$749,000.

Construction is well underway for the remaining 3 blocks, settlements targeted for July 2026. We invite you to view the completed 2-bedroom townhouses at our Open Home, Sunday 12.30pm - 2.00pm.

New home features:

- Stone bench tops
- ABI tapware
- At Healthy Homes Standard
- Heat pump in living area
- Stainless Steel appliances
- West Facing for great Sun
- Courtyards

For further information click on the link below.
<https://www.agentsend.com/FL03>

Check out the developers:
<http://www.urbancompany.co.nz>

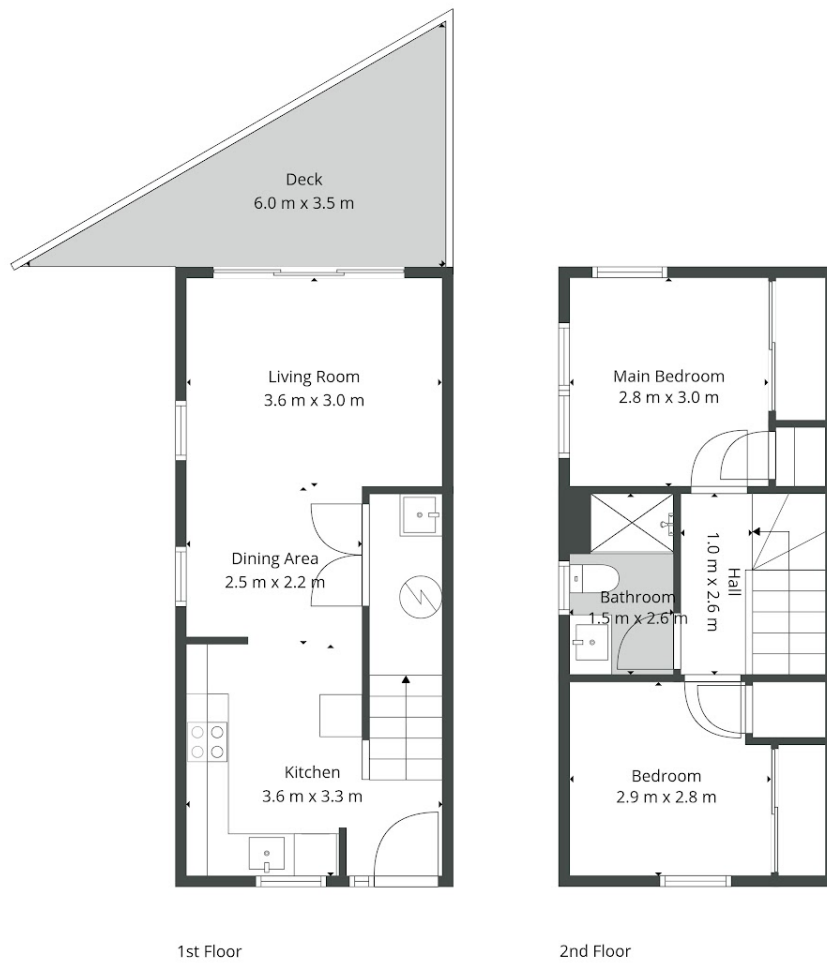
2 BED | 1 BATH | 0 CAR

PRICE:
Asking price \$749,000

OPEN FOR INSPECTION:
N/A



Rakesh Champaneri
0211750490
Rakesh@projectrealty.co.nz
projectrealty.co.nz



1st Floor

2nd Floor

Sizes And Dimensions Are Approximate, Actual May Vary.



Disclaimer: Please note this floor plan is for marketing purposes and is to be used as a guide only. All dimensions are estimates only and may not be exact measurements.