



**SOLD**

## RENOVATED APARTMENT WITH STUNNING RIVER & CITY VIEWS

\*Will Suit Buyers from \$900,000\*

Perfectly positioned in the Avena Apartments West Tower, this renovated three-bedroom, two-bathroom residence epitomizes absolute riverfront luxury. With uninterrupted, never-to-be-built-out panoramic views of the Swan River & Perth CBD, this apartment offers a rare combination of elegance and exclusivity.

Residents also enjoy access to resort-style amenities including a pool, spa, sauna, BBQ area, gym & clubhouse — all set against one of Perth's most breathtaking riverfront backdrops.

### LIVING AND DINING

The heart of the home is the open plan living and dining area, designed to make the most of the apartment's elevated position and breathtaking river views. Expansive glass doors open seamlessly to a large 21m2 entertainer's balcony, creating a natural flow between indoor and outdoor living.

The space features:

- Engineered wood flooring
- LG split system air conditioning unit
- a full wall of built-in storage cupboards, ensuring both style and practicality

### BALCONY

- Expansive space with tiled flooring
- Fitted with a Ziptrack blind, allowing year-round enjoyment of the stunning outlook over the Swan River.

### KITCHEN

Flowing seamlessly from the living/dining area & beautifully appointed, the modern open-plan kitchen is as functional as it is elegant. Features include:

- Stone benchtops and glass splashback
- Bosch oven and Technika 4-burner electric cooktop
- Baumatic built-in microwave oven and Bosch dishwasher
- Double fridge recess and double stainless steel sink with mixer and filtered water tap

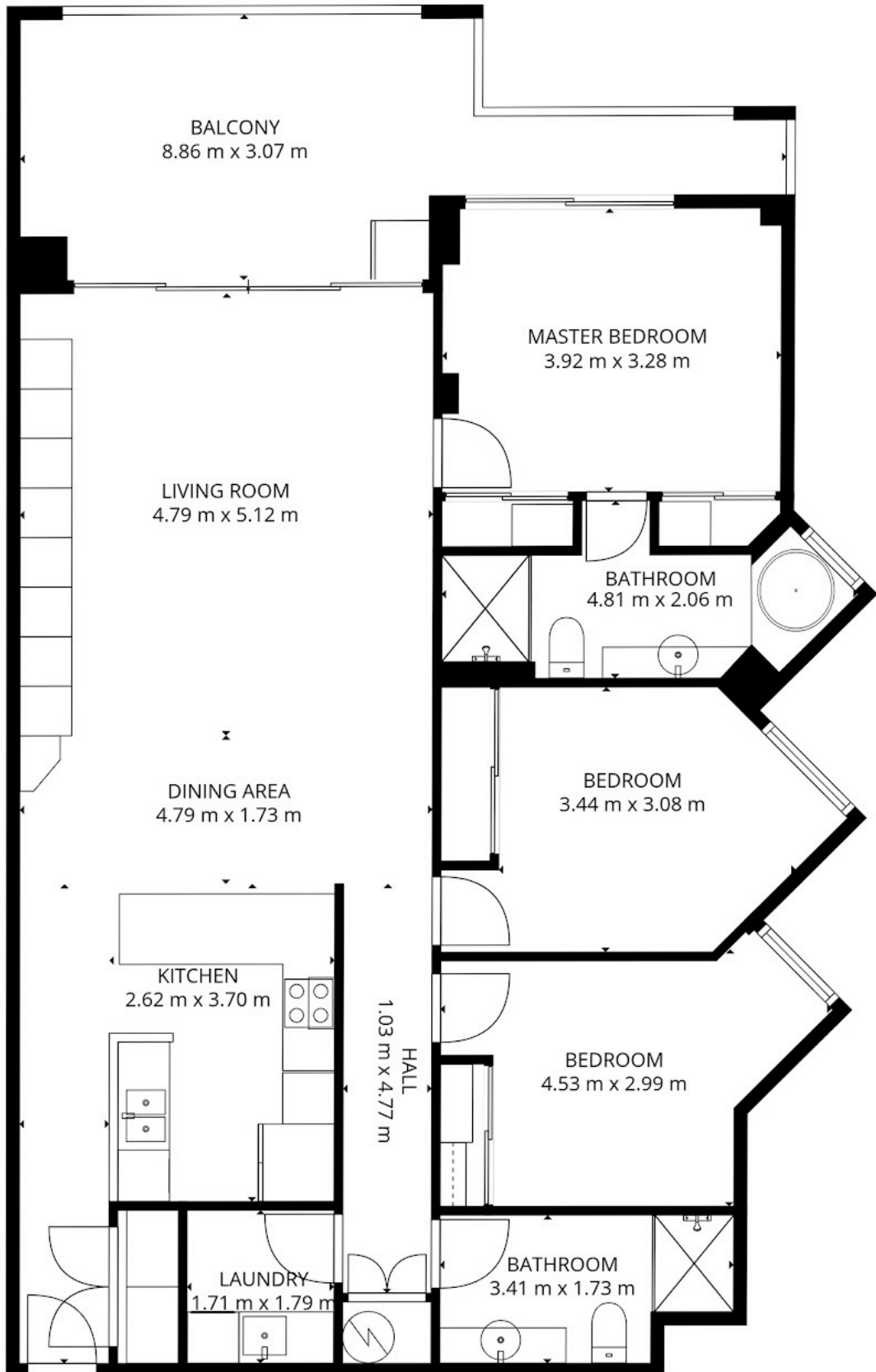
3 BED | 2 BATH | 2 CAR

PRICE:  
\$950,000

OPEN FOR INSPECTION:  
N/A



**Jill Groves | Chloe Leggett Team**  
**0408765240**  
jillgroves@atrealty.com.au  
[www.atrealty.com.au](http://www.atrealty.com.au)



Disclaimer: Please note this floor plan is for marketing purposes and is to be used as a guide only. All dimensions are estimates only and may not be exact measurements.

**@realty**

**13/18 Tanunda Dr Rivervale**

**Jill Groves | Chloe Leggett Team**  
**0408765240**

jillgroves@atrealty.com.au

www.atrealty.com.au

Not to scale • All measurements are approximate • Drawn for presentation purposes only

**@realty**