



**SOLD**

## CHARM, COMFORT & UNBEATABLE CONVENIENCE!

Perfectly positioned in one of Werribee's most sought-after pockets, this beautifully presented home delivers quality living inside and out. Enjoy being just moments from everything this thriving community has to offer, including:

- Werribee Train Station for an effortless commute to the Melbourne CBD
- Pacific Werribee Shopping Centre with endless retail, dining and entertainment options
- Highly regarded schools and childcare, making family life simpler
- Easy Princes Freeway access, whether you're heading into the city or down the coast
- Werribee Open Range Zoo and the historic Werribee Mansion, practically on your doorstep

Inside, the home features three generous bedrooms, each fitted with built-in robes and hybrid timber flooring throughout, offering a stylish, durable and low-maintenance finish. The spacious open-plan dining area flows into a well-appointed kitchen complete with quality appliances, a new dishwasher, and plumbed fridge—ideal for modern living.

The property also boasts several premium upgrades designed for comfort, efficiency, and value, including:

- 6.3kW Jinko solar panels with a Goodwe inverter for reduced energy costs
- Heat-pump hot water system for eco-friendly efficiency
- Split heating and cooling throughout (including all bedrooms)

Step outside and enjoy the rear entertaining area, perfect for gatherings, barbecues, or simply relaxing outdoors. A low-maintenance backyard, side access, and a remote carport plus shed add further practicality and convenience.

Whether you're a first-home buyer, a growing family, or an investor seeking a reliable addition to your portfolio, this property represents an outstanding opportunity in a prime location.

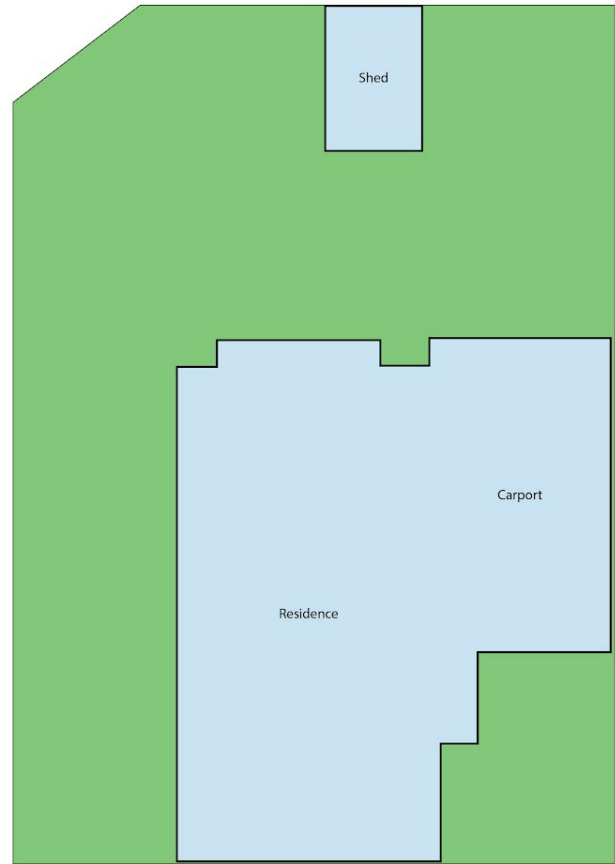
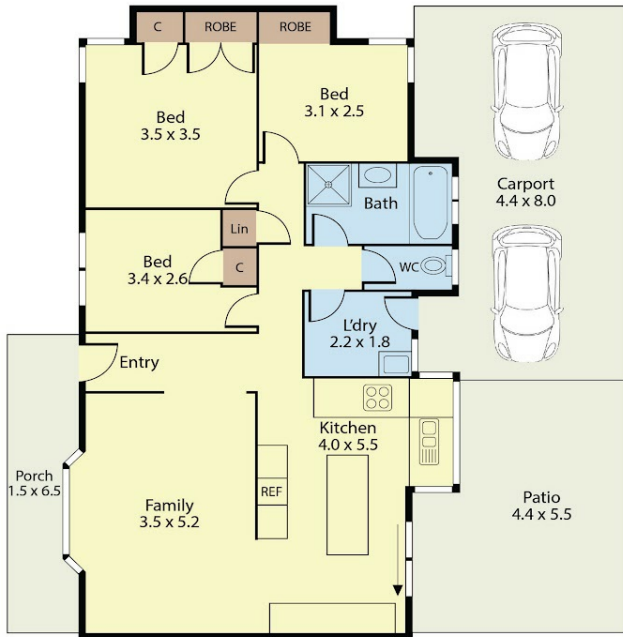
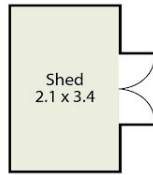
**3 BED | 1 BATH | 3 CAR**

**PRICE:**  
\$855,000

**OPEN FOR INSPECTION:**  
N/A



**Joseph Hanna**  
**0423966320**  
joseph@atrealty.com.au  
[www.atrealty.com.au](http://www.atrealty.com.au)



## 14 Dalpura Court, Werribee

Dimensions are approximate and for illustrative purposes only

Disclaimer: Please note this floor plan is for marketing purposes and is to be used as a guide only. All dimensions are estimates only and may not be exact measurements.