

## FOR LEASE

### PRIME LOCATION – WALK TO SCHOOL AND TRAIN STATION FOR ULTIMATE CONVENIENCE!

Located in one of Wyndham's most desirable suburbs, this beautifully presented home offers comfort, convenience, and a family-friendly lifestyle. With schools, parks, childcare, shops, and Wyndham Vale Train Station all close by, you'll enjoy easy living in a highly connected location.

Step inside to a well-designed floorplan featuring a spacious living area, four generous bedrooms, and a modern kitchen that flows into the dining and family zones — perfect for relaxed everyday living.

#### Property Features:

- Master bedroom with walk-in robe and private ensuite
- Three additional bedrooms with built-in robes
- Floorboards and tiles throughout (low maintenance)
- Ducted heating + split system cooling in living & master
- Solar panels and solar/gas hot water system (energy savings)
- Stainless steel kitchen appliances
- Double remote garage with internal and rear access
- Separate laundry
- Security roller shutters on front windows
- Walking distance to schools, Montessori Centre & Wyndham Vale Station
- Close to parks, shops, and family amenities

This home offers exceptional comfort in a prime Manor Lakes location — ideal for families seeking space and convenience.

Call Now! 0478 248 008

#### TO INSPECT OR APPLY:

It's important to register your interest in any upcoming and advertised open homes or inspections. Failing to register may result in not being informed of any unforeseen or unplanned changes to inspection times. To register (or apply) for this property please click on the get in touch button and send your details to our agency. You'll receive an email back with instructions on how to register and apply via our website and booking service.

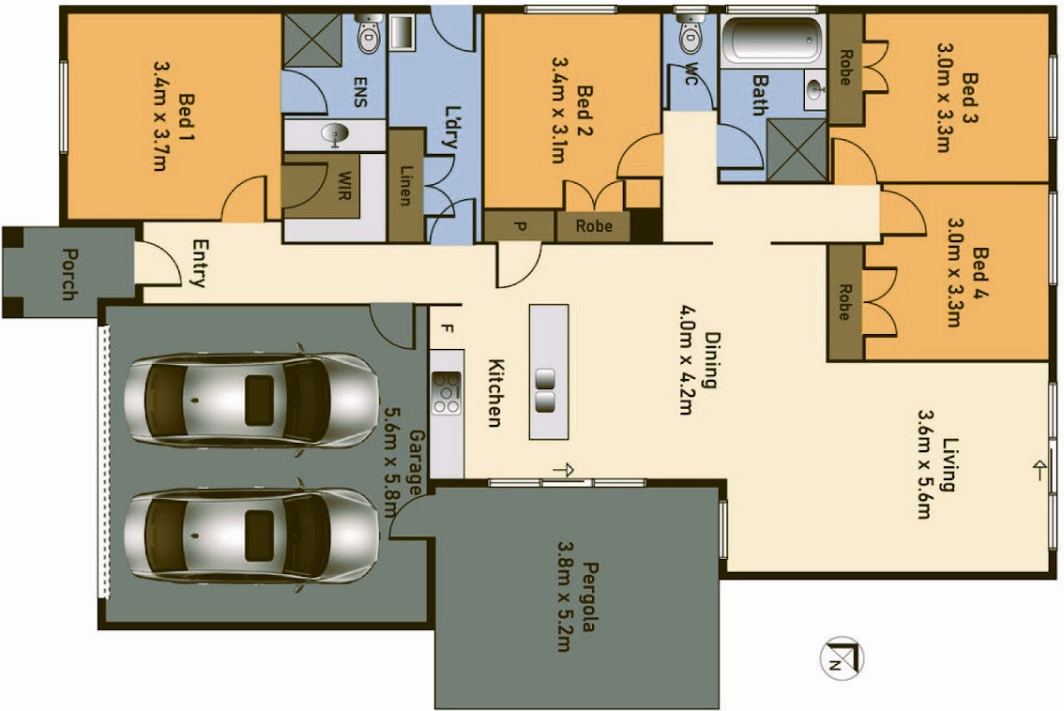
4 BED | 2 BATH | 2 CAR

PRICE:  
\$475 per week

OPEN FOR INSPECTION:  
N/A



**Khushbu Hada**  
**0478248008**  
khushbu@atrealty.com.au  
[www.atrealty.com.au](http://www.atrealty.com.au)



Khushbu Hada | 0478 248 008 | [khushbu@atrealty.com.au](mailto:khushbu@atrealty.com.au) | [atrealty.com.au/khushbuhada](http://atrealty.com.au/khushbuhada)

Disclaimer: Whilst every effort has been made to ensure the accuracy of these particulars, no warranty is given by the vendor or the agent as to their accuracy. Interested parties should not rely on these particulars as representations of fact but must instead satisfy themselves by inspection or otherwise.

Disclaimer: Please note this floor plan is for marketing purposes and is to be used as a guide only. All dimensions are estimates only and may not be exact measurements.