



**SOLD**

## TURN KEY APARTMENT WITH VIEWS!

Step into the ultimate Gold Coast lifestyle with this sophisticated one-bedroom apartment perched on the 6th floor in the heart of Surfers Paradise. This sleek 81sqm residence offers modern comfort and resort-style amenities, perfect for discerning buyers or savvy investors looking to capitalise on this iconic beachside destination's enduring appeal.

The thoughtfully designed layout features a spacious bedroom with his and her built in robes, contemporary bathroom with quality finishes, and well-appointed kitchen complete with dishwasher. Split system air conditioning ensures year-round comfort, while your private balcony overlooks the pool & city/ocean views

### Property Features -

- \* Spacious bedroom with his & her robes, balcony access & ensuite
- \* Open plan living/dining & kitchen area with lots of space
- \* Separate laundry area
- \* Large private balcony
- \* 1 Allocated car space
- \* Turn key - fully furnished
- \* Currently tenanted until Feb 2026 at \$700 per week
- \* Walking distance to Stunning Surfers Paradise beaches, public transport including G link & many wonderful cafe's & restaurants

### Building & resort amenities include -

- In-ground swimming pool & spa
- Fully equipped gym
- 2 Full size tennis courts
- Sauna & BBQ areas

The building has undergone a recent transformation of main entry, foyers and external painting

Living in Surfers Paradise means embracing a lifestyle where every day feels like a holiday. The famous Cavill Avenue lies moments from your doorstep, offering boutique shopping and world-class dining. This world-renowned destination provides pristine beaches, vibrant nightlife, and endless entertainment options.

Call Kera today to book an inspection - 0404 232 429

1 BED | 1 BATH | 1 CAR

PRICE:  
\$750,000

OPEN FOR INSPECTION:  
N/A



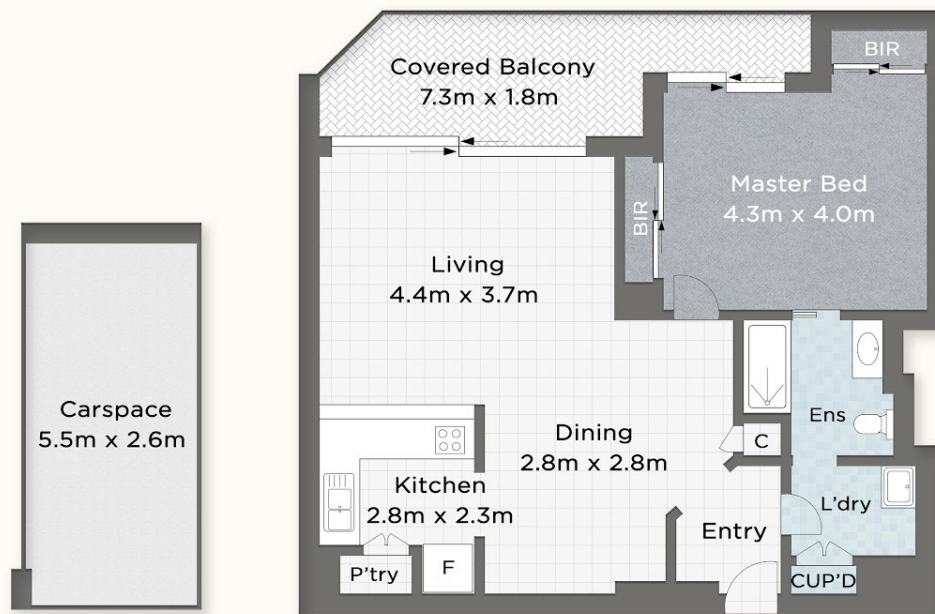
**Kera Thomas**  
**0404232429**  
kera@atrealty.com.au  
[www.atrealty.com.au](http://www.atrealty.com.au)

602/5 ENDERLEY AV  
SURFERS PARADISE

1 1 1

INTERNAL	70m <sup>2</sup>
EXTERNAL	11m <sup>2</sup>
TOTAL	81m <sup>2</sup>

Kera Thomas  
0404 232 429



Measurements are approximate only  
and no responsibility is taken  
for any error, omission, or mis-statement.  
This is for illustrative purposes only  
and should be used as such by  
any prospective purchaser.  
[visualmotion.com.au](http://visualmotion.com.au)

Disclaimer: Please note this floor plan is for marketing purposes and is to be used as a guide only. All dimensions are estimates only and may not be exact measurements.