



SOLD

SPACIOUS 5-BEDROOM FAMILY HOME WITH POOL & ENTERTAINER'S DECK!!!

Tucked away in a quiet cul-de-sac, this generous 5-bedroom home delivers the perfect blend of space, comfort and lifestyle – ideal for large families or those who love to entertain.

Designed with functionality in mind, the home features multiple living zones including dining, living and family areas, offering plenty of room for everyone. The modern kitchen is a standout, complete with an island bench, pantry, gas cooking and excellent storage.

All five bedrooms are well-sized, four fitted with built-in wardrobes, while the main bedroom includes a private ensuite and walk-in robe. The contemporary main bathroom features a bathtub for added convenience.

Step outside and you'll find a true entertainer's dream – a covered deck with outdoor BBQ area, ceiling fan and heater, creating an all-season space for gatherings. The sparkling in-ground pool adds the finishing touch, perfect for staying cool and enjoying summer with family and friends.

Key Features:

- 5 bedrooms, 4 with built-in wardrobes
- Master bedroom with ensuite & walk-in robe
- Modern bathroom with bathtub
- Large kitchen with island bench, pantry & gas cooking
- Multiple living areas: dining, living & family
- Ducted air conditioning + ceiling fans throughout
- Covered entertaining deck with BBQ, ceiling fan & heater
- In-ground swimming pool
- Double car garage

A fantastic opportunity to secure a spacious, feature-packed home in the sought-after Wadalba area — close to schools, shops, parks and essential amenities.

Please contact Tom today for an inspection!

Tom Twyford

5 BED | 2 BATH | 2 CAR

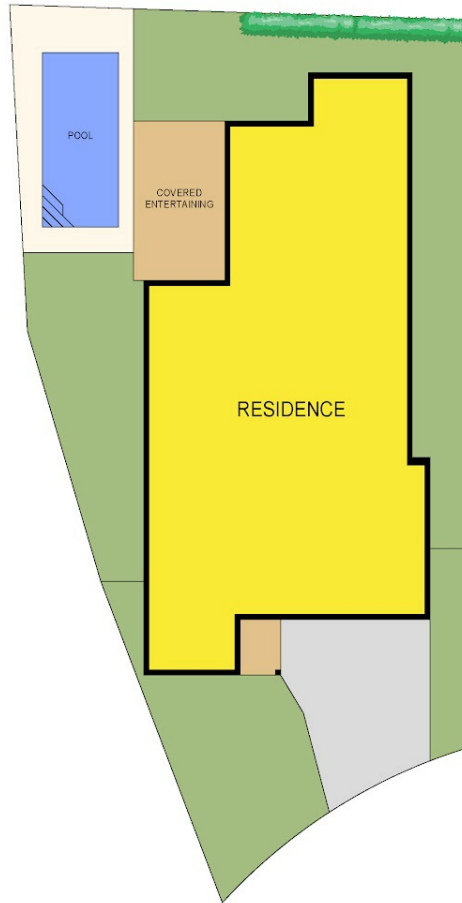
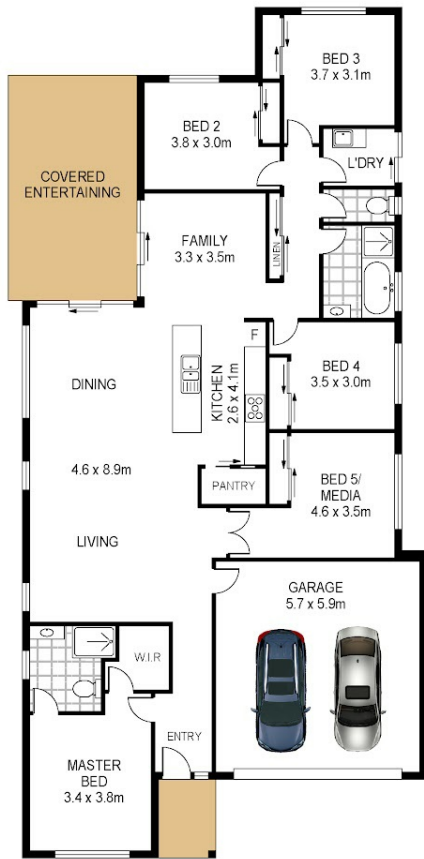
PRICE:
\$1,190,000

OPEN FOR INSPECTION:
N/A



Thomas Twyford
0414002753

tomtwyford@atrealty.com.au
www.atrealty.com.au



Total Internal Floor Area: 197 sqm

Scale in metres. Indicative only. Dimensions are approximate. All information contained herein is gathered from sources we believe to be reliable. However we cannot guarantee its accuracy and interested persons should rely on their own enquiries.



2 Dray Close Wadalba

Disclaimer: Please note this floor plan is for marketing purposes and is to be used as a guide only. All dimensions are estimates only and may not be exact measurements.