



Jason Lee @realty



SOLD

PERFECT FIRST HOME OR INVESTMENT IN A PRIME BENTLEY LOCATION

Proudly Presented by Jason Lee

Perfectly positioned in a highly convenient and fast-growing pocket of Bentley, this well-presented street-front home at 148A Walpole Street offers an exceptional blend of comfort, practicality and low-maintenance living. Whether you're a first-home buyer, downsizer or savvy investor, this property delivers outstanding value with its functional layout and unbeatable access to key amenities.

Step inside and discover a bright, welcoming living space, a modern kitchen with ample storage, and generously sized bedrooms designed for everyday comfort. The home also offers secure parking, a private courtyard and an easy-care exterior—ideal for buyers seeking a fuss-free lifestyle.

Set on a generous 364sqm block, the property provides plenty of room for outdoor enjoyment. Gardening enthusiasts, young families or those considering future expansion will appreciate the flexibility this space provides. Two covered carports offer secure parking, while the remainder of the yard invites endless possibilities for landscaping, play areas or outdoor entertaining.

Location is where this home truly shines. Bentley has firmly established itself as one of Perth's premier education and innovation hubs, anchored by the world-renowned Curtin University and supported by quality institutions including Canning College and South Metropolitan TAFE.

Location Highlights:

- Walking distance to Curtin University and Technology Park
- Multiple bus routes, including high-frequency services to Perth CBD
- Close to Bentley Plaza for daily shopping and conveniences
- Easy access to Albany Highway for direct city and suburban travel

This well-connected suburb offers excellent transport links, ensuring smooth travel to Perth CBD, Cannington, and surrounding areas. Bentley Plaza caters to everyday needs, while the strategic position along Albany Highway provides seamless access across the metropolitan area.

3 BED | 2 BATH | 2 CAR

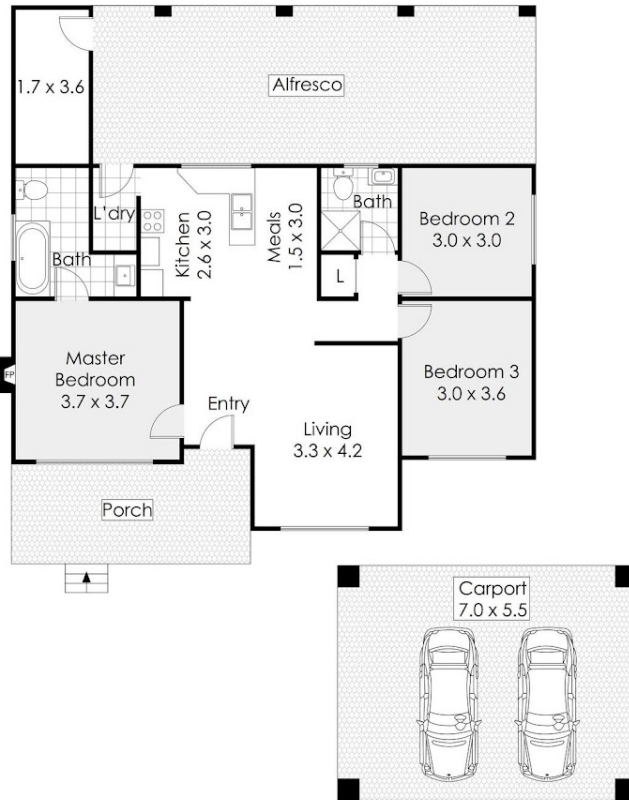
PRICE:
\$805,000

OPEN FOR INSPECTION:
N/A



Jason Lee
0450067070

jasonlee@atrealty.com.au
www.atrealty.com.au



148A Walpole Street, Bentley

This floor plan is not to scale.
 Dimensions are approximate and therefore should only be used for illustrative purposes.

	185 m ²
	3 Bed
	2 Bath
	2 Car

Disclaimer: Please note this floor plan is for marketing purposes and is to be used as a guide only. All dimensions are estimates only and may not be exact measurements.