



FOR SALE

THE PERFECT FOUR BEDROOM HOME!

13 Nichols Street in Durack offers a modern and inviting home that is ready for you to move straight into. Built in 2015 and thoughtfully designed for comfort and convenience, it is an appealing option for first home buyers, families, or investors seeking a solid and low maintenance property.

Set in the highly desirable Durack Heights area, the home provides a practical layout with generous living spaces that flow easily from indoors to outdoors. With quality finishes, smart design, and a location close to major amenities, it presents fantastic everyday living.

Property Highlights:

- Four bedrooms with the main bedroom featuring an ensuite and walk-in robe
- Built-in robes to the other bedrooms
- Tiled and airconditioned throughout
- Hostess kitchen overlooking the lounge and dining areas
- Easy indoor to outdoor flow to the undercover entertaining area
- Double lock up garage with direct internal access
- Fully fenced 508m2 allotment
- Close to Gateway Shopping Centre, schools, lakes, walking tracks, Golf Club, Palmerston CBD and an easy commute to Darwin

This is a wonderful opportunity to purchase in a well regarded and convenient pocket of Durack Heights. With nothing to do but move in and enjoy, this home is sure to attract strong interest. Reach out today to make it yours.

Additional Information:

- Year Built: 2015
- Status: Vacant possession – ready for you to move in immediately.
- Council Rates (approx.): \$2084 per year

Contact me today at 0417508800 or nicolewheeler@atrealty.com.au to schedule a private viewing and experience the beauty and convenience of this property for yourself.

Make an Offer: <https://myatrealty.com/v2/properties/85692/listings/73941/submitofferform>

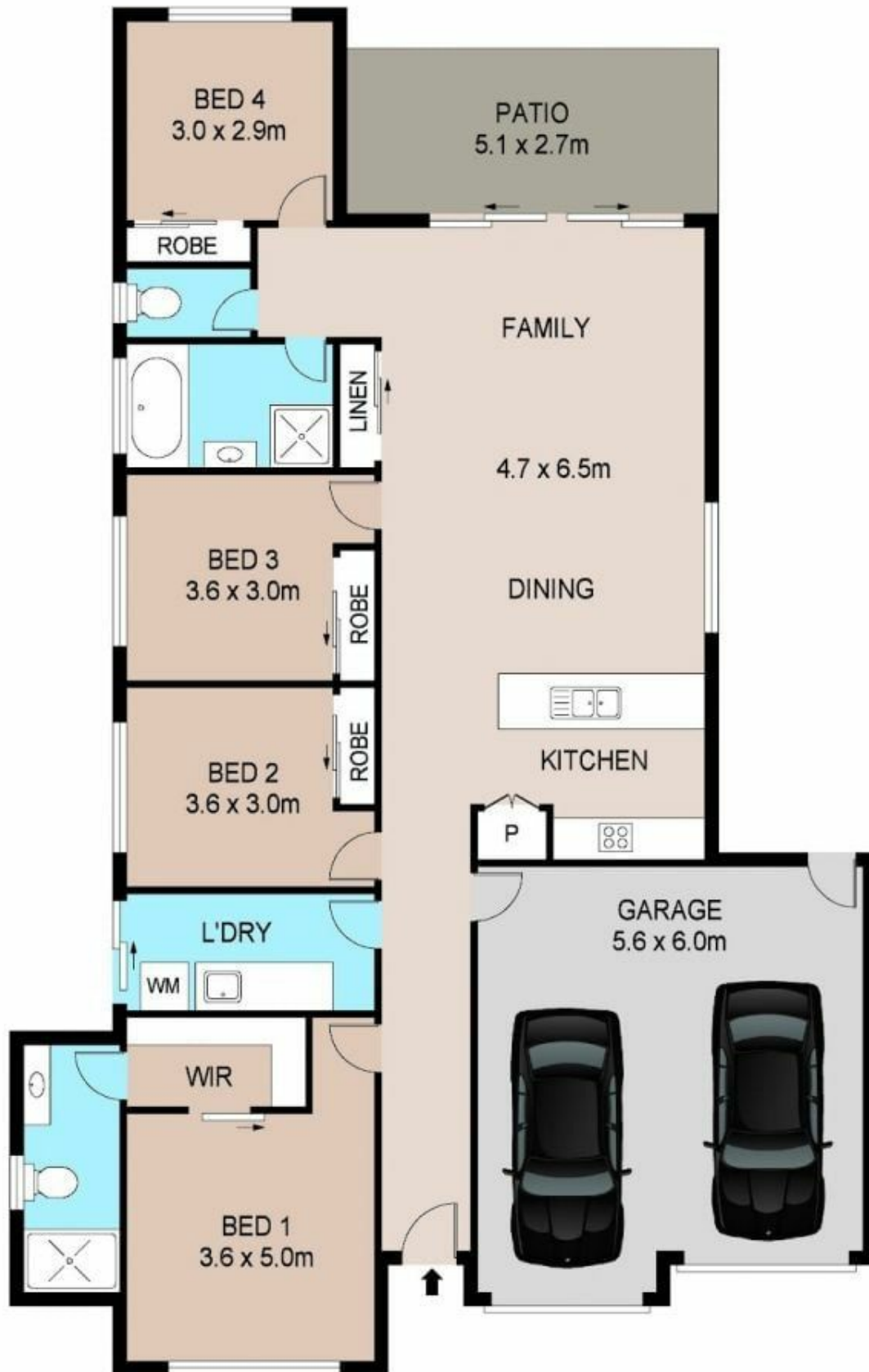
4 BED | 2 BATH | 2 CAR

PRICE:
OVER \$750,000

OPEN FOR INSPECTION:
N/A



Nicole Wheeler
0417508800
nicolewheeler@atrealty.com.au
www.atrealty.com.au



Disclaimer: Please note this floor plan is for marketing purposes and is to be used as a guide only. All dimensions are estimates only and may not be exact measurements.

DISCLAIMER: PLANS SHOWN ARE FOR MARKETING PURPOSES ONLY, ALL DIMENSIONS ARE APPROXIMATE AND NOT TO SCALE. THEY ARE SUBJECT TO ERRORS AND INACCURACIES AND NO LIABILITY WILL BE ACCEPTED. INTERESTED PARTIES SHOULD MAKE THEIR OWN INQUIRES.

Nicole Wheeler
 0417508800
 nicolewheeler@atrealty.com.au
www.atrealty.com.au

