

SOLD

BRAND-NEW 4-BEDROOM HOME – CENTRAL SPRINGS

If you've been searching for a fresh, modern home where you can settle in and enjoy a low-maintenance lifestyle, 3 Lobella Crescent, Caboolture is a must-see. Set on a 400m² block and built by Avia Homes, this brand-new single-level home is located in the highly regarded Central Springs Estate, surrounded by quality homes, walking paths, parks, and family-friendly amenities.

The kitchen is a standout feature — with stone benchtops, 900mm stainless steel appliances, dishwasher, dual sinks with flexi tap, and a classic subway-tile splashback. Ample bench and storage space, plus a built-in pantry, make it both practical and stylish. It overlooks the open-plan living and dining area with air-conditioning, roller blinds, and security screens. Large sliding doors open onto the alfresco, providing seamless indoor–outdoor flow — perfect for entertaining or relaxed weekend living.

A second living zone adds versatility — ideal as a media room, kids' play area, or quiet retreat. Finished with plush carpet, blinds, security screens, and a TV/ethernet point, it's a cosy space the whole family will enjoy.

The master suite is a peaceful escape, featuring air-conditioning, ceiling fan, plush carpet, and a generous walk-in wardrobe. The ensuite includes a doorless walk-in shower, detachable shower head, stone benchtop, large shower niche, chrome tapware, and a ceramic vessel sink. Three additional bedrooms all include built-in wardrobes, ceiling fans, and soft carpeting, with a separate bathroom and toilet providing extra convenience. A separate laundry adds practicality and storage.

Brand-new homes in Central Springs Estate are rare and won't last long — contact Jordan Ivins today to secure your dream home!

Key Features:
Land Size: approx. 400m²
House Size: approx. 195m²
Builder: Avia Homes
Build Year: 2025

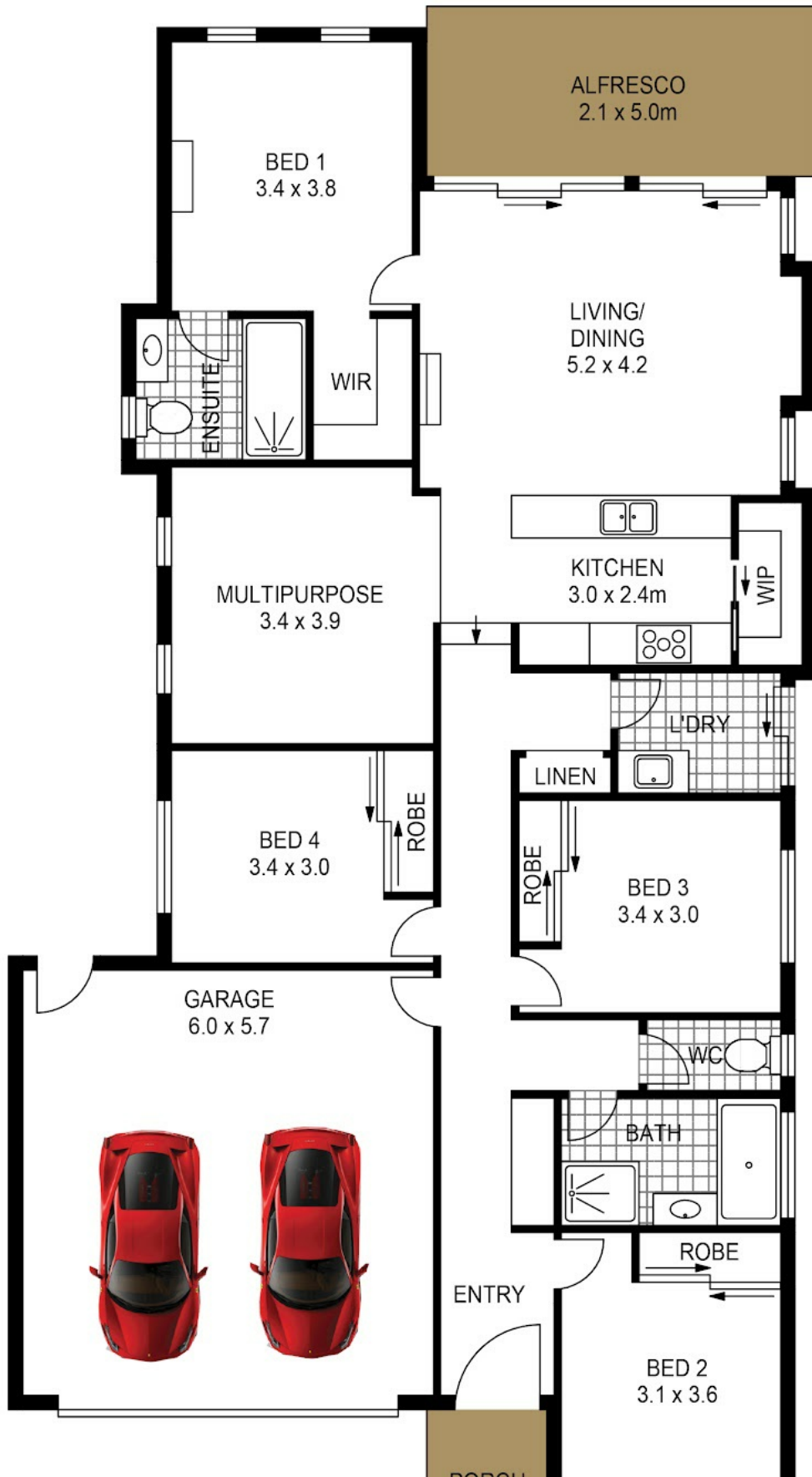
4 BED | 2 BATH | 2 CAR

PRICE:
\$940,000

OPEN FOR INSPECTION:
N/A



Jordan Ivins
0407010391
jordan@atrealty.com.au
www.atrealty.com.au



Disclaimer: Please note this floor plan is for marketing purposes and is to be used as a guide only. All dimensions are estimates only and may not be exact measurements.

GROUND FLOOR