

5/41 PENINSULAR DRIVE, SURFERS PARADISE, QLD, 4217

Mandate  
PROPERTIES



## FOR LEASE

### RIVERSIDE RETREAT WITH CITY VIEWS – YOUR COASTAL LIFESTYLE AWAITS! 5/41 PENINSULAR DRIVE, SURFERS PARADISE

\$725 per week | \$2,800 bond | Available immediately

Positioned on the ground floor of the boutique Surfers Riverside complex, this beautifully presented UNFURNISHED two-bedroom apartment delivers the perfect blend of tranquillity, convenience, and lifestyle appeal. Set along the Nerang River with shimmering skyline views, this inviting residence provides privacy, natural light, and effortless access to everything Surfers Paradise has to offer.

Step inside to a bright, open-plan living and dining space that flows out to your private terrace—ideal for relaxed mornings, evening unwinds, or alfresco dining. Both bedrooms are generously sized and enjoy direct terrace access, while the master includes its own ensuite and excellent wardrobe space.

A practical kitchen with great storage, a secure car space, and access to superb communal facilities—including a swimming pool, riverfront barbecue area, and private pontoon—make this the complete coastal package.

Whether you're seeking a peaceful sanctuary or a vibrant lifestyle address, this home offers exceptional value and comfort.

#### Property Features:

- Charming boutique building with only 16 residences
- Two spacious bedrooms with direct terrace access
- Two bathrooms, including master ensuite
- Open-plan living and dining flowing to private outdoor area
- Functional kitchen with ample storage
- Built-in wardrobes
- Secure allocated car space
- North-eastern aspect with excellent natural light
- Access to pool, BBQ area & riverside pontoon

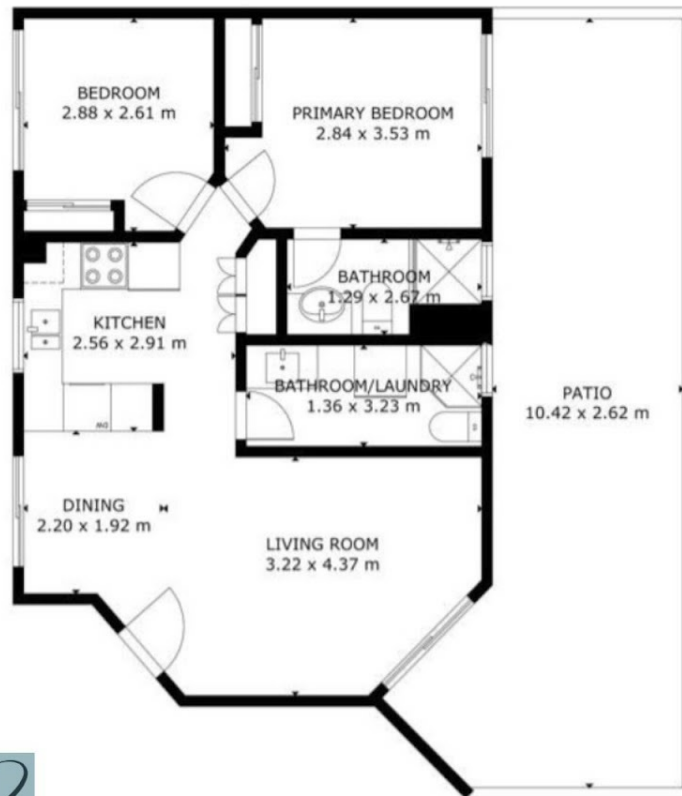
2 BED | 2 BATH | 1 CAR

PRICE:  
\$725 per week

OPEN FOR INSPECTION:  
N/A



**Luella Engelen**  
**0474779450**  
luella@mandate2.com.au  
mandate2.com.au



**Mandate**  
PROPERTIES

GROSS INTERNAL AREA  
TOTAL: 54 m<sup>2</sup>  
FLOOR: 1: 54 m<sup>2</sup>  
EXCLUDED AREAS: PATIO: 30 m<sup>2</sup>  
SIZE AND DIMENSIONS ARE APPROXIMATE, ACTUAL MAY VARY

5/41 Peninsular Drive, Surfers Paradise

Disclaimer: Please note this floor plan is for marketing purposes and is to be used as a guide only. All dimensions are estimates only and may not be exact measurements.