



SOLD

QUIET COURT CLOSE TO WERRIBEE RIVER AND TRAIN STATION

Step into a beautifully updated home that offers a wonderful sense of homely charm and modern style in a quiet, central pocket of Werribee. This residence delivers a welcoming setting with light-filled interiors and an inviting layout designed for a seamless, comfortable lifestyle.

The home features a private master suite complete with its own ensuite, while the additional bedrooms are well-sized and serviced by a stylishly renovated main bathroom. The floor plan flows effortlessly from a relaxed formal lounge into a spacious open-plan family area, where a cozy gas log fire heater serves as the heart of this comfortable home.

Outside, the property provides a standout space for year-round gatherings and practical storage. A massive covered area creates an ideal environment for entertaining, while a long carport and gated side access offer exceptional off-street parking for multiple vehicles. The low-maintenance backyard also includes secure storage sheds perfect for hobbies or extra workspace.

Perfectly positioned for convenience, you are just moments away from everything the region has to offer, including major shopping hubs and local cafes. Excellent connectivity is provided by the nearby Werribee Train Station and easy freeway access, while outdoor enthusiasts will appreciate the close proximity to local river trails and parklands.

This move-in-ready home is the perfect opportunity for those seeking a modern retreat with a truly homely feel in a peaceful court location. All are welcome at the scheduled open for inspections!

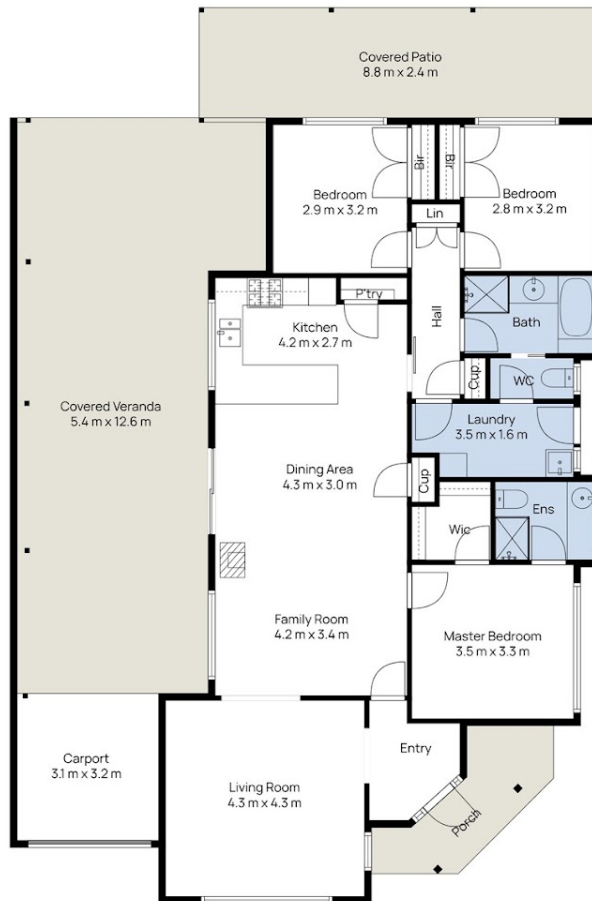
3 BED | 2 BATH | 4 CAR

PRICE:
\$695,000

OPEN FOR INSPECTION:
N/A



Samuel Hogan
0401315234
samuel@atrealty.com.au
www.atrealty.com.au



South Facing



16 Eileen Ct, Werribee

Whilst every attempt has been made to ensure the accuracy of the floor plan contained here, measurements of doors, windows, rooms and any other items are approximate and no responsibility is taken for any error, omission, or mis-statement. This plan is for illustrative purposes only and should be used as such by any prospective purchaser. The services, systems and appliances shown have not been tested and no guarantee as to their operability or efficiency can be given.



Disclaimer: Please note this floor plan is for marketing purposes and is to be used as a guide only. All dimensions are estimates only and may not be exact measurements.