

4/23 Middleton Road
Johnsonville

FOR SALE

MOVE-IN READY - MODERN, BRIGHT & LOW-MAINTENANCE

Completed in 2022, this contemporary two-bedroom townhouse offers an easy, low-maintenance lifestyle in a highly convenient Johnsonville location. Thoughtfully designed and beautifully presented, the home makes excellent use of its 72sqm floor area, combining modern finishes with a bright, open-plan layout ideal for professionals, first-home buyers, or investors.

The kitchen and living area sit at the heart of the home, finished to a high standard and filled with natural light. From here, doors open to a sunny, north-facing courtyard, creating a seamless indoor-outdoor connection perfect for everyday living. Upstairs, two well-proportioned bedrooms are complemented by a sleek, modern bathroom. Practical storage and off-street parking also enhance the home's overall appeal.

Highlights Include

- * Near-new townhouse completed in 2022
- * Approximately 72sqm of well-designed living space
- * Open-plan living and dining with excellent natural light
- * Stylish, well-finished kitchen with quality appliances
- * Sunny, north-facing courtyard for relaxed outdoor living
- * Two comfortable bedrooms and a modern bathroom with a generous shower
- * Double glazing, full insulation, and a heat pump for year-round comfort
- * Dedicated off-street car park plus additional exterior storage
- * Easy-care layout with hard flooring downstairs and carpeted upstairs
- * Walking distance to Johnsonville Centre, transport links, shops, and local amenities

Offering modern comfort, convenience, and a lock-and-leave lifestyle, 4/23 Middleton presents a smart opportunity in one of Wellington's most connected suburbs. Homes of this quality and location are always in demand. Act quickly to secure yours.

For sale by deadline closing Thursday 19 February at 2pm (unless sold prior).

2 BED | 1 BATH | 1 CAR

PRICE:

Deadline sale. Deadline date
19/02/2026

OPEN FOR INSPECTION:

N/A



Mike Lovell

0274356007

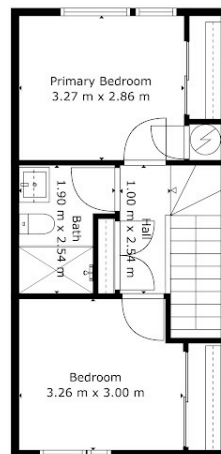
mike@luxerealty.co.nz

www.luxerealty.co.nz

Shuttercraft.



1st Floor



2nd Floor

4/23 Middleton Road
Johnsonville

Measurements are indicative only

Luxe
REALTY

Disclaimer: Please note this floor plan is for marketing purposes and is to be used as a guide only. All dimensions are estimates only and may not be exact measurements.