



SOLD

SOLD BY THOMAS CHOY | LEADING AGENT FOR OVER 28 YEARS

Offering outstanding value in one of the Hills District's most sought-after master-planned communities. Built by Domaine Homes, this youthful single-level residence combines style, space, and functionality with a versatile floorplan featuring multiple living zones, seamless indoor-outdoor entertaining and quality finishes throughout. Move-in ready and perfectly positioned, the home is just moments from parklands, quality schools and the newly opened Gables Town Centre.

Key Features Include:

- * Four generous bedrooms, all with built-in wardrobes
- * Master suite with walk-in robe and private ensuite
- * Expansive open plan living and dining flowing to outdoor entertaining
- * Designer chef's kitchen with gas cooking, stainless steel appliances and walk-in pantry
- * Formal living area or dedicated media room
- * Stylish family bathroom with separate bathtub and shower
- * Lovely covered alfresco area ideal for entertaining
- * Split system air conditioning and alarm system
- * Double lock-up garage with remote entry
- * Walk to the Lakeside Town Centre where Woolworths is now open along with many other speciality shops
- * Close to Santa Sophia Catholic College and future Gables Public School (expected opening 2027)
- * Easy access to Rouse Hill Station and Metro services
- * Part of the Hills District's largest and fastest-growing master-planned community

A standout opportunity for families and investors alike, this home represents one of the best value offerings in The Gables on a full sized block.

Disclaimer: All information contained herein, including the description, floor plan, and images, is gathered from reliable sources. We have no reason to doubt its accuracy; however, we cannot guarantee it. All interested parties should make and rely upon their inquiries.

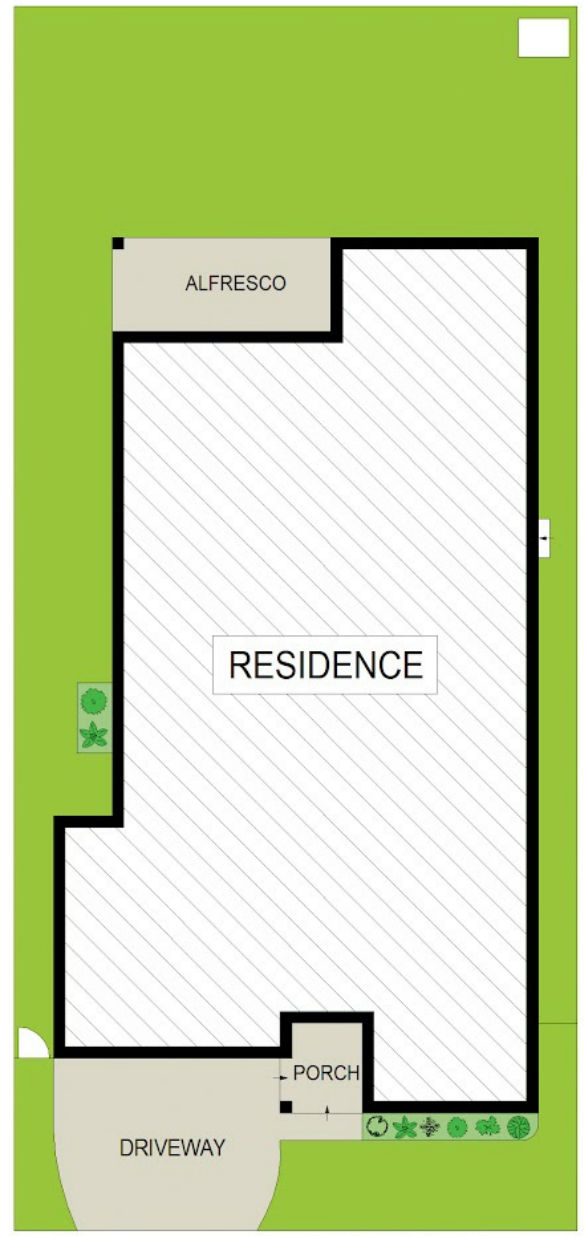
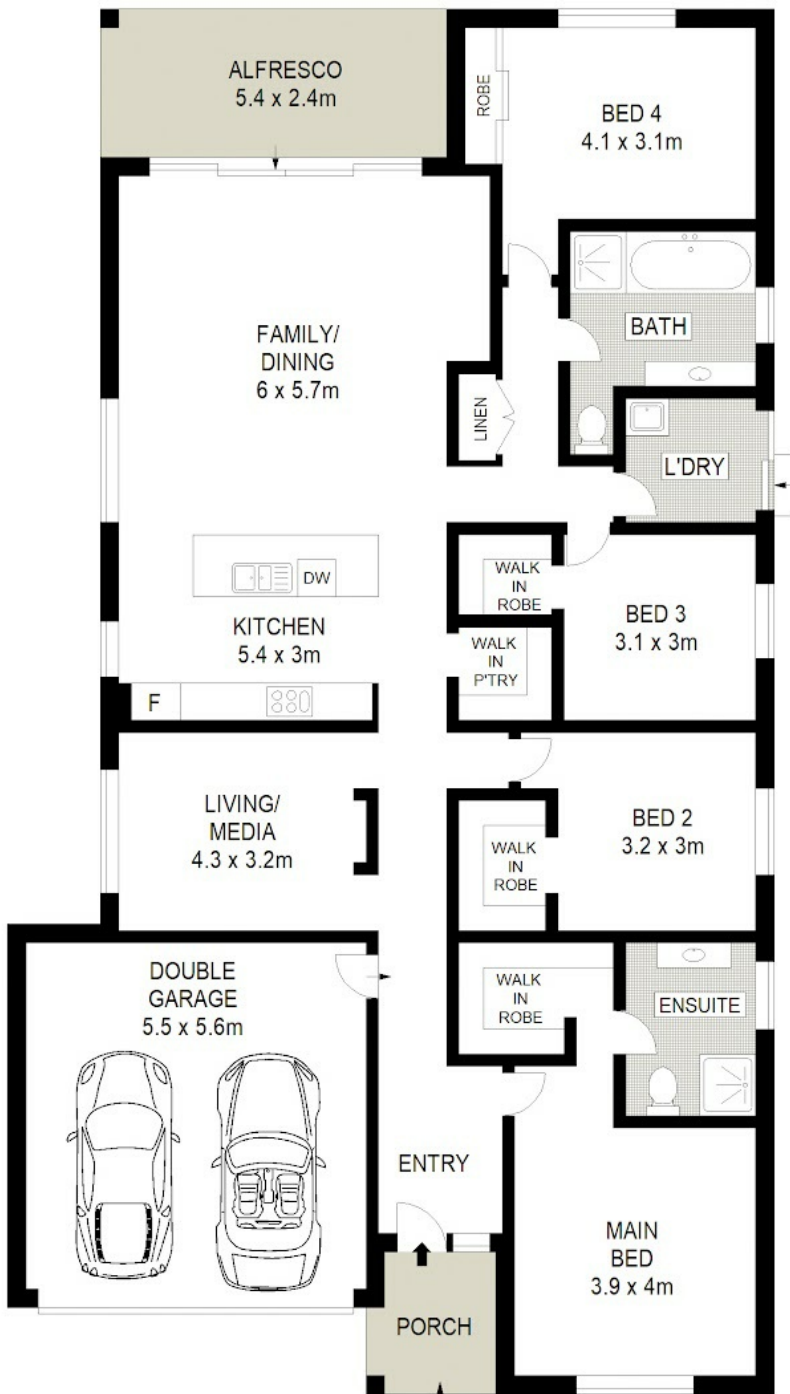
4 BED | 2 BATH | 2 CAR

PRICE:
\$1,390,000

OPEN FOR INSPECTION:
N/A



Thomas Choy
0414253119
thomaschoy@hillsestategroup.com.au
hillsestategroup.com.au



SITE PLAN



Disclaimer: Please note this floor plan is for marketing purposes and is to be used as a guide only. All dimensions are estimates only and may not be exact measurements.

9 Bitalli Street,
Gables

Thomas Choy
0414253119
thomaschoy@hillsestategroup.com.au
hillsestategroup.com.au



DISCLAIMER: Floor plan and site plan are for illustration purposes only. Measurements, boundaries and north arrow orientation are for information only. Interested parties should verify details independently. Floor Plans by ShutterBooth Sydney.