



SOLD

MOVE-IN READY TOWNHOUSE WITH LOW BODY CORPORATE IN CONVENIENT RUNCORN LOCATION

Welcome to this beautifully maintained, owner-occupied, double-storey townhouse, offering exceptional comfort, convenience, and lifestyle in the heart of Runcorn. With refreshing breezes year-round, this spacious home is an ideal opportunity for first-home buyers, downsizers, or investors seeking a low-maintenance property in a highly desirable location.

Set within a quiet, secure and well-kept complex, this residence delivers a relaxed lifestyle with modern upgrades and surprising space both inside and out.

Key Features

- ✓ 3 generously sized bedrooms, all with built-in robes
- ✓ Air conditioning in the living room and bedroom for year-round comfort
- ✓ Spacious tiled living and dining area with air conditioning
- ✓ Large modern kitchen featuring updated appliances and ample bench & cupboard space
- ✓ Modern bathroom plus a second toilet downstairs for convenience
- ✓ Fully fenced private courtyard with garden shed and timber deck – perfect for outdoor entertaining
- ✓ Single lock-up garage, plus plenty of visitor parking
- ✓ Secure, gated complex offering peace and privacy
- ✓ Low body corporate fees approx. \$45/week – excellent affordability
- ✓ Separate laundry
- ✓ Separate Toilet

Rental Appraisal: \$600–\$650 per week

Council Rates: approx. \$448 per quarter

Water & Sewerage: approx. \$372 per quarter

Location Highlights

Everything you need is right at your doorstep:

- ✓ Short walk to Fruitgrove Train Station
- ✓ Bus routes to the city include 150, 155, 156, & P157

3 BED | 1 BATH | 1 CAR

PRICE:
\$735,000

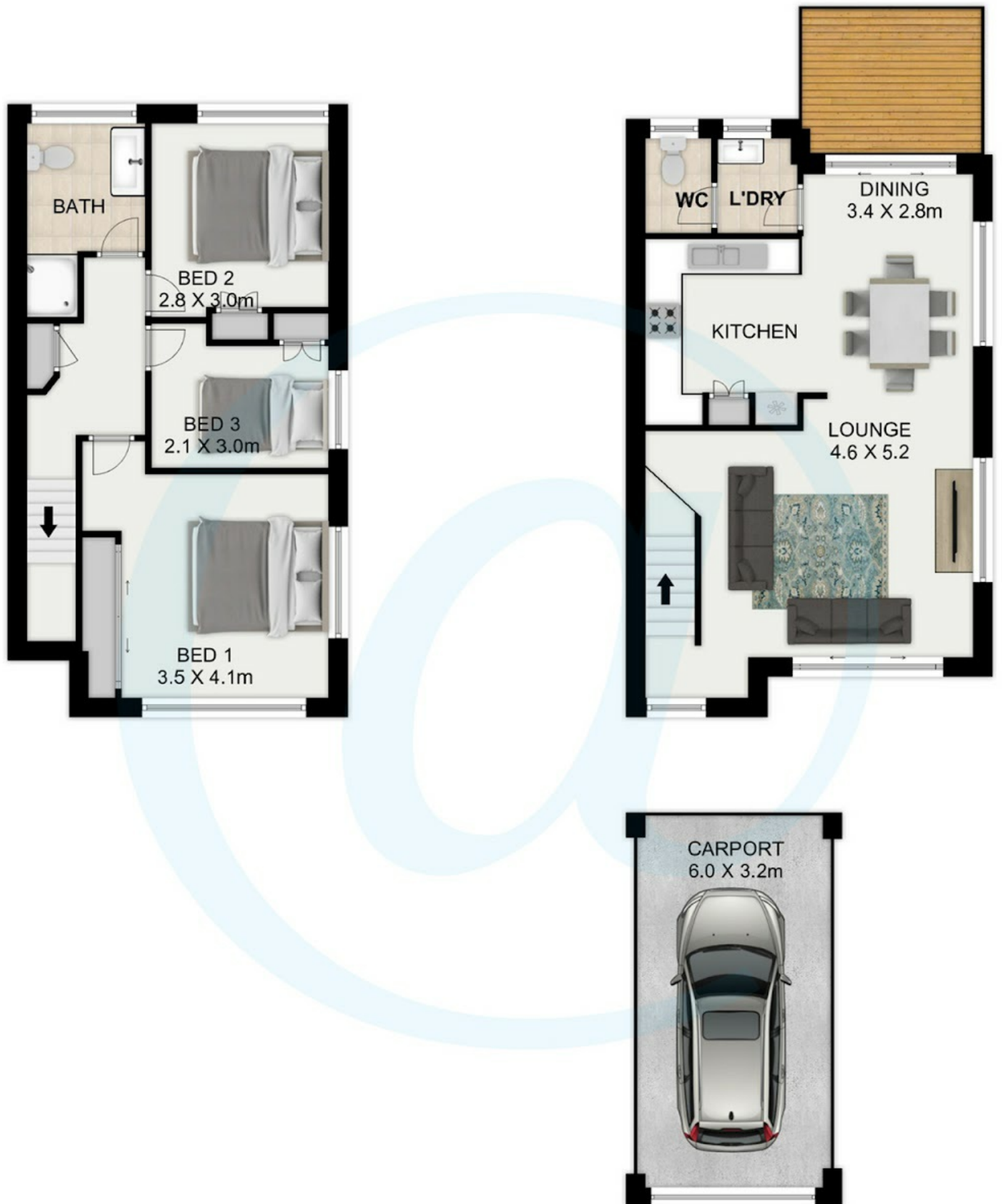
OPEN FOR INSPECTION:
N/A



Yogi Sharma
0415558800

yogi.sharma@atrealty.com.au

www.atrealty.com.au



Disclaimer: Please note this floor plan is for marketing purposes and is to be used as a guide only. All dimensions are estimates only and may not be exact measurements.

Yogi Sharma
0415558800

yogi.sharma@arealty.com.au
www.atrealty.com.au

16/92 Victor Street **RUNCORN**



This floorplan is not to scale; measurements are indicative and in meters. Exterior elements are not in position. Plans should not be relied on. Interested parties should make and rely on their own enquiries. All other information provided has been collected from reliable sources but cannot be guaranteed for accuracy.

