



FOR SALE

TOWNHOUSE WITH 3 CAR PARKS!

An immaculate 3 bed, 2 bath house with Garage and TWO off-street car parks in a tucked away cul de sac behind Victoria Park. Quiet - with a sunny front garden and 2 terraces at the back.

Completely rebuilt 4 years ago in high quality, low maintenance aluminium Alucobond cladding, you can move straight in and unpack your cases!

The location is simply un-matched with Les Mills, Cafes and Restaurants on your door step and only a short walk to the harbour or up Franklin Road to the heart of Ponsonby. Sky Tower and Queen Street are about 5 minutes away; Britomart Station and the ferries are another 10.

This turnkey house has been furnished and equipped to a high standard and is very popular with tenants, providing an excellent rental return for an investor's portfolio or an immediate home for a successful professional working centrally. The complete contents could be available if required.

Located just behind Victoria Park with its weekly cricket, daily Aerobics and skate park - a hub for the friendly community to get together and easy for a newcomer to make some friends.

Body Corp \$1,850 per quarter.
Rates \$881.77 per quarter.

Modern City Townhouse + 3 Carparks

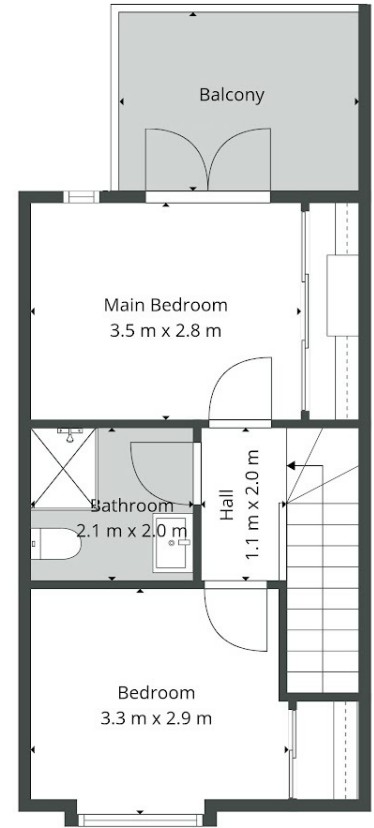
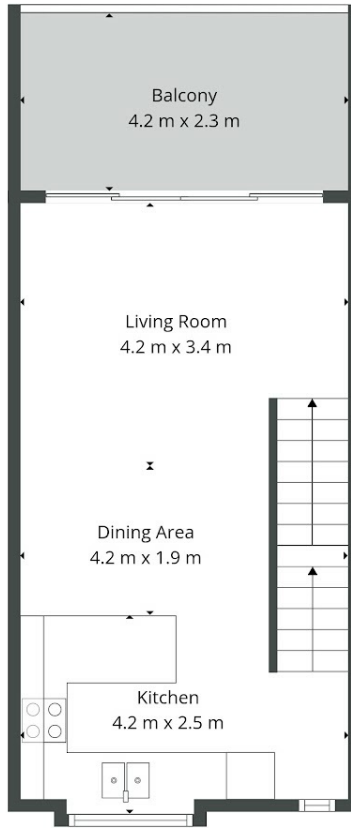
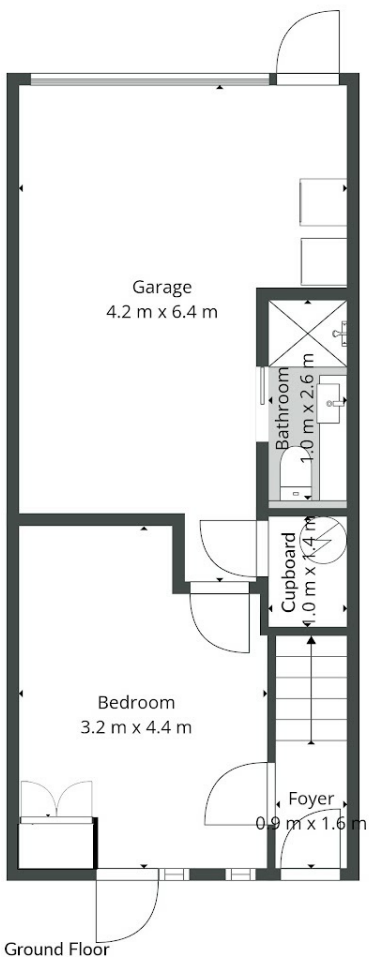
3 BED | 2 BATH | 3 CAR

PRICE:
Enquiries Over \$1,150,000

OPEN FOR INSPECTION:
N/A



Todd Sherley
021686000
todd@eliterealty.net.nz
www.eliterealty.net.nz



Sizes And Dimensions Are Approximate, Actual May Vary.



Disclaimer: Please note this floor plan is for marketing purposes and is to be used as a guide only. All dimensions are estimates only and may not be exact measurements.