



**SOLD**

## MODERN 2022 BUILT HOME ON A FLAT, USABLE ACRE IN TAMAREE

Near new 2022 quality built home on a flat, usable one acre in the ever popular Tamaree, just under 10 minutes to Gympie town centre. With walk in pantry in the kitchen plus a walk in linen cupboard in the laundry, this home is sure to accommodate those looking for that little bit of extra storage

- Near new 2022 quality home on approximately 4,047m<sup>2</sup>
- Three generous bedrooms plus master with ensuite inc walk in robe
- Large rumpus room plus separate study, perfect for families or working from home
- Light filled open plan living, dining and modern kitchen
- Air conditioning in the main bedroom and living room for year round comfort
- Internal access double garage
- High clearance shed with drive through access, ideal for caravan or boat storage
- Large solar system on the shed to help keep power costs down
- Four 5,000 gallon poly rainwater tanks, providing ample water supply
- Fully fenced property with separate fenced dog yard
- Flat, usable block with plenty of space for kids, pets or a future pool
- Peaceful acreage setting in a highly sought after Tamaree location

Balance of new home warranty, Kordon termite barrier with a Taylex septic system in place  
A rare blend of modern comfort, space and lifestyle, acreage living made easy.  
For all enquiries, please contact Chris Gablonski on 0408 708 271.

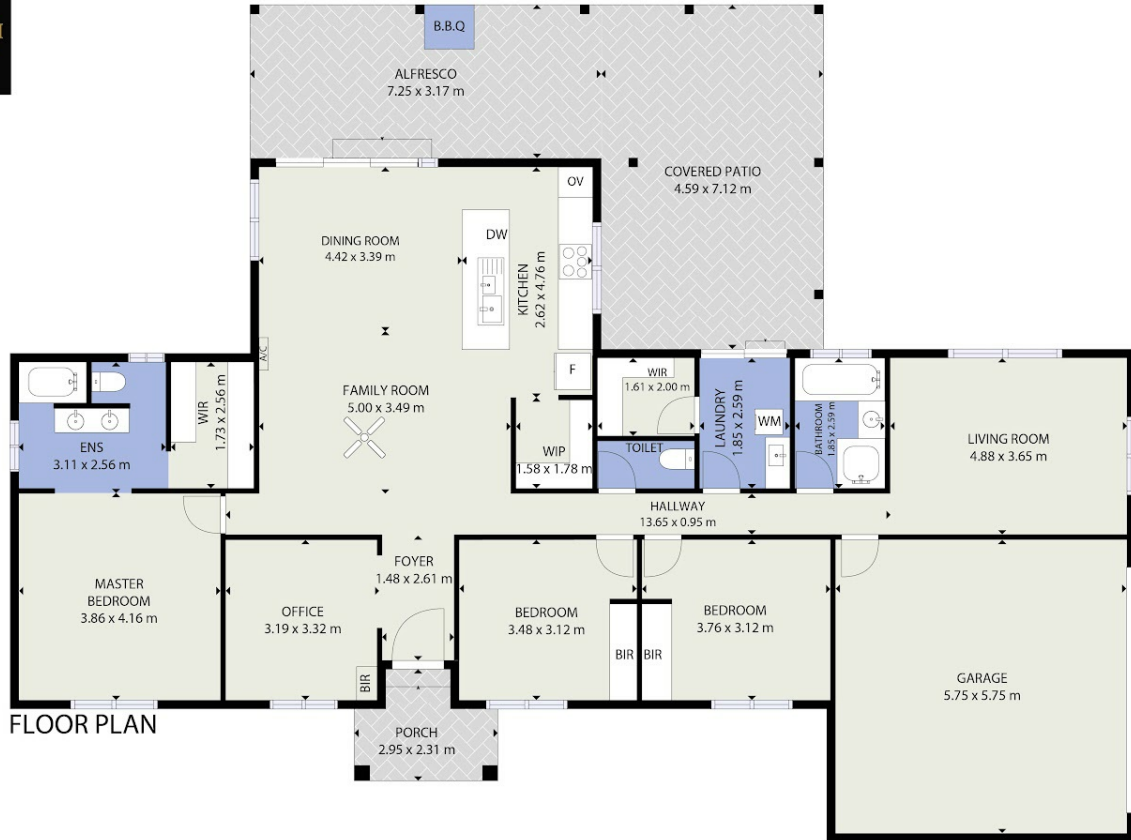
**3 BED | 1 BATH | 6 CAR**

**PRICE:**  
\$967,000

**OPEN FOR INSPECTION:**  
N/A



**Chris Gablonski**  
**0408708271**  
gabba@atrealty.com.au  
[www.atrealty.com.au](http://www.atrealty.com.au)



4 Garowme Road, Tamaree, Queensland, 4570

TOTAL APPROX. FLOOR AREA 196 SQ.M

Whilst every attempt has been made to ensure the accuracy of the floor plan contained here, measurements of doors, windows, rooms and any other items are approximate and no responsibility is taken for any error, omission, or misstatement. This plan is for illustrative purposes only and should be used as such by any prospective purchaser.

Disclaimer: Please note this floor plan is for marketing purposes and is to be used as a guide only. All dimensions are estimates only and may not be exact measurements.