



FOR SALE

WHERE SUSTAINABLE DESIGN MEETS COASTAL SOPHISTICATION

Architectural elegance and environmental intelligence converge at 10 Stargazer – a masterfully crafted residence that proves sustainability and style are not mutually exclusive, but essential companions.

Designed by the award-winning Sunbeat Studio and brought to life by Bay Built Homes, this 7.8-star home represents a new paradigm in coastal living. Every material, every angle, every design decision has been choreographed to work in harmony with Cape Paterson's natural rhythms. The result? A home that effortlessly maintains 18-25 degrees year-round with minimal mechanical intervention – simply through intelligent orientation, thermally broken double glazing, strategic thermal mass, and breathtaking attention to passive design principles.

The aesthetic is deliberately understated yet undeniably refined. Natural textures and a carefully curated colour palette echo the coastal landscape beyond, creating spaces that feel both grounded and elevated. Light floods through the open-plan living areas, three generous bedrooms, dedicated office, and two bathrooms – all choreographed within an efficient footprint that never feels compromised.

Beyond the undeniable beauty lies genuine financial liberation. Operationally carbon-neutral with super-low running costs, this home delivers year-round comfort with no gas bill, negligible electricity costs, and readiness for electric vehicle charging. The result? Thousands of dollars saved annually – savings that compound meaningfully over time.

Positioned within The Cape's pioneering sustainable estate on approximately 499 sqm, this is more than a home – it's a statement about what matters. For the discerning buyer who refuses to choose between environmental integrity and exceptional design, 10 Stargazer offers both, without apology.

Move quickly – homes that deliver this level of design sophistication and environmental performance rarely remain available.

3 BED | 2 BATH | 2 CAR

PRICE:

\$965,000 - \$1,045,000

OPEN FOR INSPECTION:

N/A

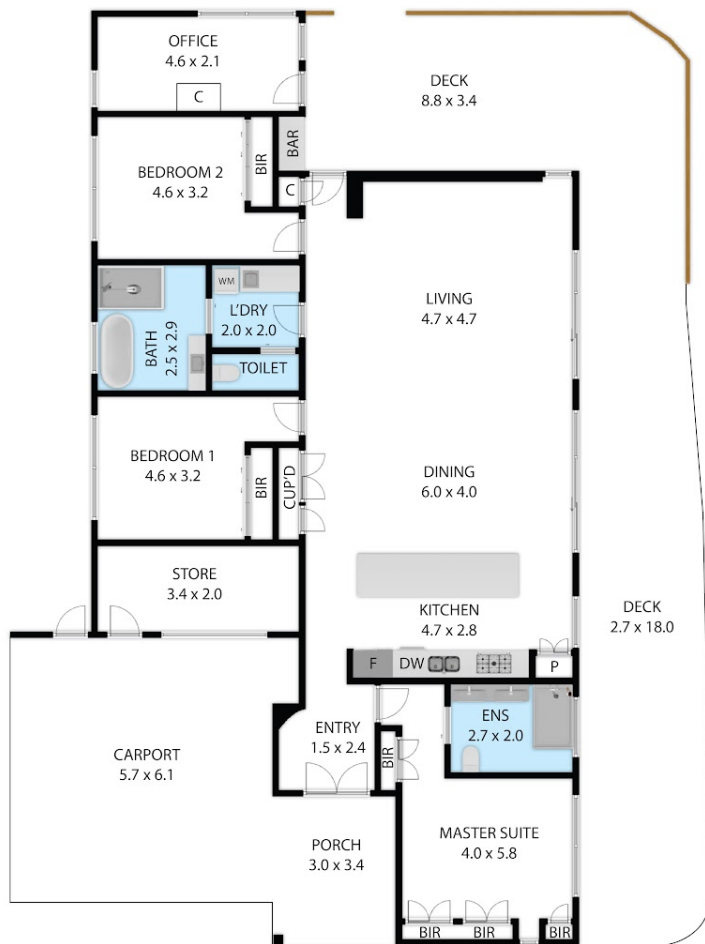


Leo Edwards

0472523445

leo@atrealty.com.au

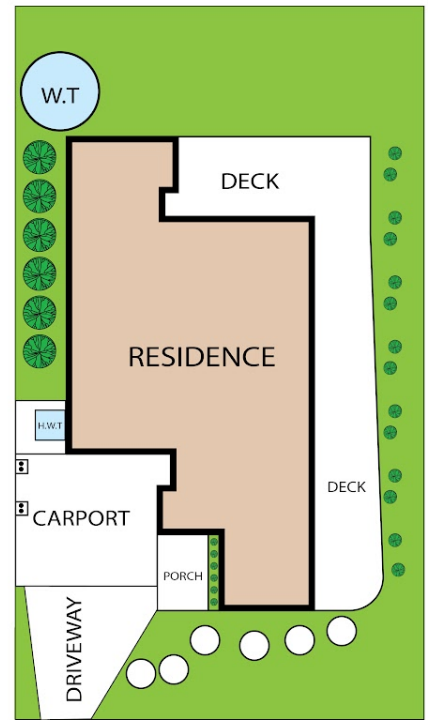
www.atrealty.com.au



10 Stargazer Rise, Cape Paterson, VIC, 3995

TOTAL APPROX. FLOOR AREA 168 SQ.M

Whilst every attempt has been made to ensure the accuracy of the floor plan contained here, measurements of doors, windows, rooms and any other items are approximate and no responsibility is taken for any error, omission, or misstatement. This plan is for illustrative purposes only and should be used as such by any prospective purchaser.



INVERLOCH
REALESTATE

@realty

Disclaimer: Please note this floor plan is for marketing purposes and is to be used as a guide only. All dimensions are estimates only and may not be exact measurements.

Leo Edwards
0472523445
leo@atrealty.com.au
www.atrealty.com.au

@realty