



# FOR SALE

## STUNNING REDLAND BAY HOME EXPECTED TO SELL THIS WEEKEND - DON'T MISS OUT!

Ladies and gentlemen, we are excited to present to you this superb home in an exclusive waterfront precinct!

With stunning views of the bay available from the deck, the home is situated on a large, level 730m2 allotment.

The block is located at in a "whisper-quiet" cul-de-sac, only 30m from the foreshore, the esplanade and a park.

With classic "Old World" styling, the home includes separate formal lounge and dining, and family-meals areas.

Immaculately presented throughout, the home and grounds have been beautifully presented and maintained.

Rich timber textures have been used throughout, from the front deck to the kitchen to the staircase and trims.

The home's family-friendly layout is well designed and incorporates a host of appealing features, including:

- Stone quartzite bench tops with a waterfall edge + plumbed fridge for direct water supply
- Kitchen appliances:- Bosch pyroelectric oven, Bosch induction cooktop, Smeg dishwasher
- Split system air-conditioning in main, ducted to 2 x bedrooms + air-conditioning downstairs
- Caravan/boat-port - 14m long x 4.55m wide x 3.7m high, completed 2024, inspected and certified
- A cedar shed measuring 6.1 m long x 3.7m wide x 2.9m high (\*on council plans as a garden shed)
- Pool with solar pool heating, waterfall feature, lighting and spa bubbles, all on remote control.
- A new 400-litre solar hot-water system + solar power system to help keep the bills down
- DC ceiling fans + oversized garage with storage and epoxy floors + automatic irrigation system
- Under stair storage area + ceiling attic access in garage with lighting + roof with lighting for

5 BED | 2 BATH | 5 CAR

### PRICE:

\$1.65m - \$1.7m+

### OPEN FOR INSPECTION:

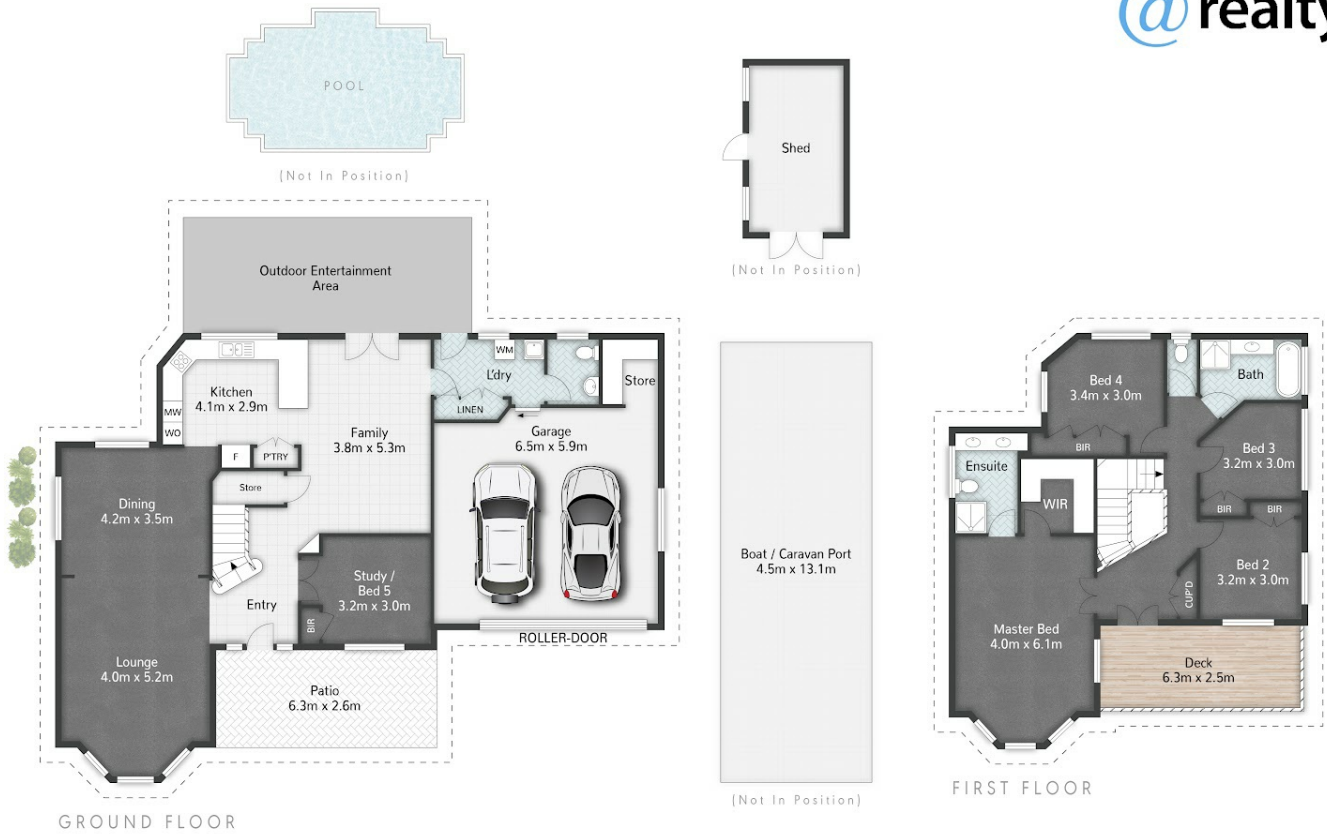
Jan 10 at 1:30pm - 2:00pm



**Ben Tafolo**  
**0419260719**

tafolo@atrealty.com.au

[tafolorealty.com.au](https://tafolorealty.com.au)

3 Cliftonville Place **REDLAND BAY**

 5 | 
  2 | 
  5 | 
  308m<sup>2</sup> | 
  730m<sup>2</sup>

Disclaimer: Please note this floor plan is for marketing purposes and is to be used as a guide only. All dimensions are estimates only and may not be exact measurements.