



SOLD

ABSOLUTE WATERFRONT RESERVE POSITION

Occupying a prized waterfront reserve position with breathtaking, uninterrupted views, this three-bedroom home presents a rare opportunity to secure one of the best plots in Jasmine Lakeside Village. With its unbeatable outlook and enormous future potential, this is a property that truly stands apart.

The home features a functional floor plan with a light-filled living room that captures stunning water views, flowing out to a verandah overlooking the reserve and lake—the perfect spot to relax and soak in the scenery. All three bedrooms include built-in wardrobes, providing comfortable accommodation for owners or guests.

While the home is immediately liveable, it also offers unlimited potential to update or personalise, allowing you to capitalise on its exceptional location. A carport provides convenient off-street parking.

Key Features:

- Waterfront reserve position with remarkable lake views
- Arguably the best site in the park
- 3 bedrooms, all with built-in wardrobes
- Living room and verandah with water views
- Functional and flexible floor plan
- Carport
- Exceptional potential to renovate or enhance

Jasmine Lakeside Village Amenities:

- Two swimming pools
- Community hall
- Tennis courts
- Bus stop conveniently located at the front of the park
- Pet friendly
- All ages park

Set within a peaceful lakeside community, this rare offering combines lifestyle, location, and potential—perfect for those seeking relaxed living with one of the most spectacular outlooks the village has to offer.

3 BED | 1 BATH | 1 CAR

PRICE:
\$257,000

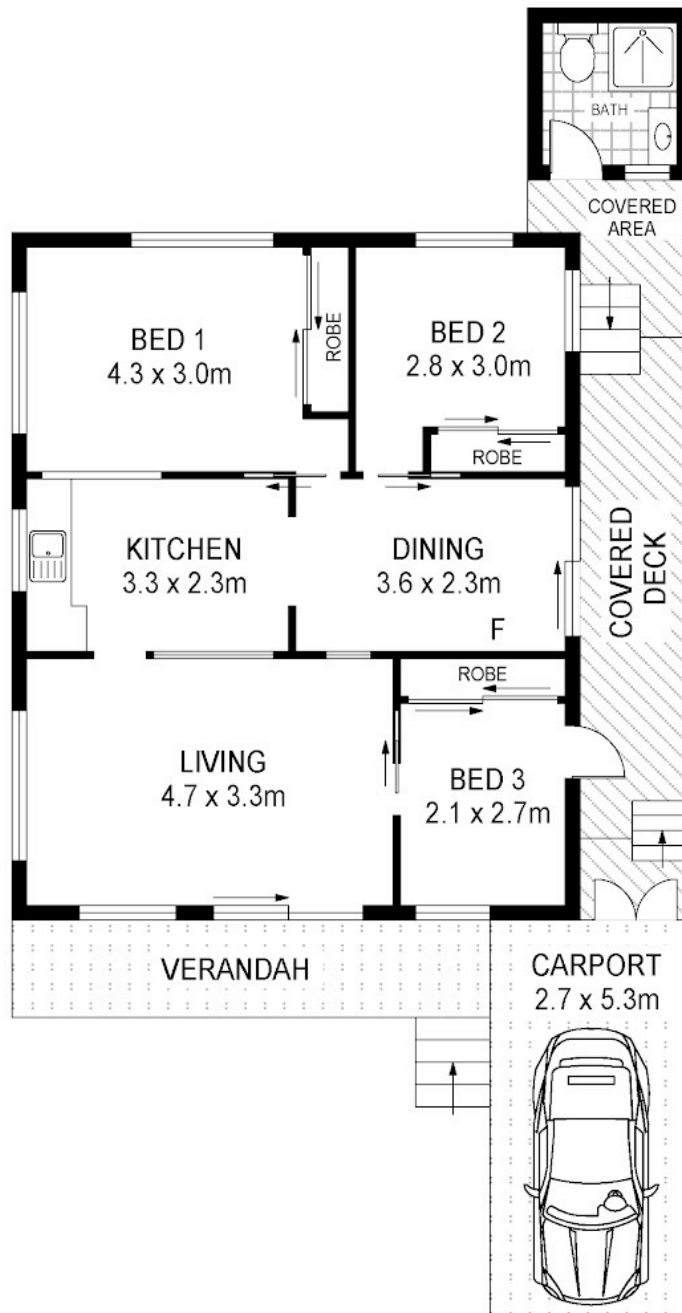
OPEN FOR INSPECTION:
N/A



Thomas Twyford
0414002753

tomtwyford@atrealty.com.au

www.atrealty.com.au



Disclaimer: Please note this floor plan is for marketing purposes and is to be used as a guide only. All dimensions are estimates only and may not be exact measurements.

55/71 Railways Road
Wye

Total Internal Floor Area: 67 sqm

Scale in metres. Indicative only. Dimensions are approximate. All information contained herein is gathered from sources we believe to be reliable. However we cannot guarantee its accuracy and interested persons should rely on their own enquiries.

Thomas Twyford
0414002753
tomtwyford@atrealty.com.au
www.atrealty.com.au

