



SOLD

3 BEDROOM 2 BATHROOM VILLA IN PRIME POSITION!!!

Set within the highly regarded Lakeside Leisure Village, this well-presented 3-bedroom, 2-bathroom home offers generous living spaces, excellent functionality and a relaxed lifestyle in a friendly, pet-friendly community.

The home features open plan living, dining and kitchen areas, complemented by split system air conditioning and ceiling fans throughout for year-round comfort. The kitchen is well equipped with gas cooking and a pantry, while the adjoining sunroom with bar provides a great additional space for entertaining or unwinding.

Accommodation includes a master bedroom with ensuite and walk-in robe, plus two additional bedrooms with built-in wardrobes. The main bathroom includes a bathtub, and outside you'll find a private backyard, covered front deck, garden shed, and double car carport.

Key Features:

- 3 bedrooms, 2 bathrooms
- Master bedroom with ensuite & walk-in robe
- Open plan living, dining & kitchen areas
- Kitchen with gas cooking & pantry
- Main bathroom with bathtub
- Sunroom with bar
- Covered front deck & private backyard
- Double car carport & garden shed
- Split system air conditioning
- Ceiling fans throughout

Village Features:

- Short walk to local shopping centre
- Pet-friendly community
- Large solar-heated swimming pool with sunshade & deck chairs
- New tennis court with covered seating area
- 3-rink bowling green
- BBQ areas with sheltered seating

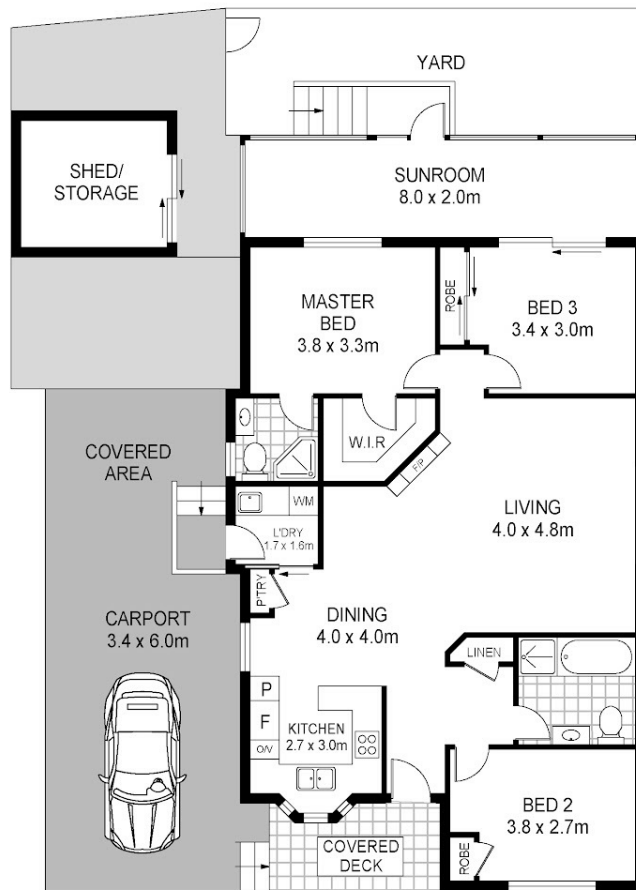
3 BED | 2 BATH | 2 CAR

PRICE:
\$592,000

OPEN FOR INSPECTION:
N/A



Thomas Twyford
0414002753
tomtwyford@atrealty.com.au
www.atrealty.com.au



@realty 215/51 Kamilaroo Avenue
Lake Munmorah

Total Internal Floor Area: 114 sqm

Scale in metres indicative only. Dimensions are approximate. All information contained herein is gathered from sources we believe to be reliable. However we cannot guarantee its accuracy and interested persons should rely on their own enquiries.



Disclaimer: Please note this floor plan is for marketing purposes and is to be used as a guide only. All dimensions are estimates only and may not be exact measurements.

Thomas Twyford
0414002753
tomtwyford@atrealty.com.au
www.atrealty.com.au

