



FOR SALE

ELEVATED PRIVATE FAMILY HOME WITH ROOM FOR EVERYONE!

This elevated home has it all: spacious open-plan living, four good-sized bedrooms, a double garage plus additional carport.

The thoughtful design flows from the kitchen through to the family and dining areas, creating a true central hub for everyday living. Set on a private battle-axe block, the home sits above neighbouring properties, giving you a "manor-like" feel, attractive hill views and excellent privacy well back from the street.

Inside, the layout works beautifully for families. The main bedroom includes an ensuite and walk-in robe, while the fourth bedroom offers flexibility as a study, nursery, teen retreat or guest room. Multiple living zones mean everyone can spread out or come together as needed.

Family-friendly features include a modern kitchen with dishwasher, ducted A/C, great storage and generous bench space; a versatile study/fourth bedroom ideal for work-from-home or kids' homework; and a paved outdoor area that is perfect for BBQs, kids' birthdays and relaxed weekend entertaining. The home is move-in ready – comfortable to live in straight away, with scope to add your own touches over time.

Parking and storage are well catered for with a double garage plus extra carport, ideal for multiple vehicles, the boat, camper and all the family's gear. The 931.4 m² block is a "green-thumb's delight", offering loads of privacy now and plenty of scope to create your own garden vision.

Located in a convenient pocket of Coffs Harbour, you're close to schools, shops, services and transport, with beaches, the Jetty precinct and the Big Banana all an easy drive away. Families will appreciate nearby schooling options including Orara High School and Tyalla Public School (buyers should confirm current enrolment zones).

This property represents exceptional family value – simply move in and enjoy the space and privacy of an elevated battle-axe block, then add your own touches in one of the Coffs Coast's most liveable areas.

4 BED | 2 BATH | 3 CAR

PRICE:

Price Guide \$845,000

OPEN FOR INSPECTION:

N/A



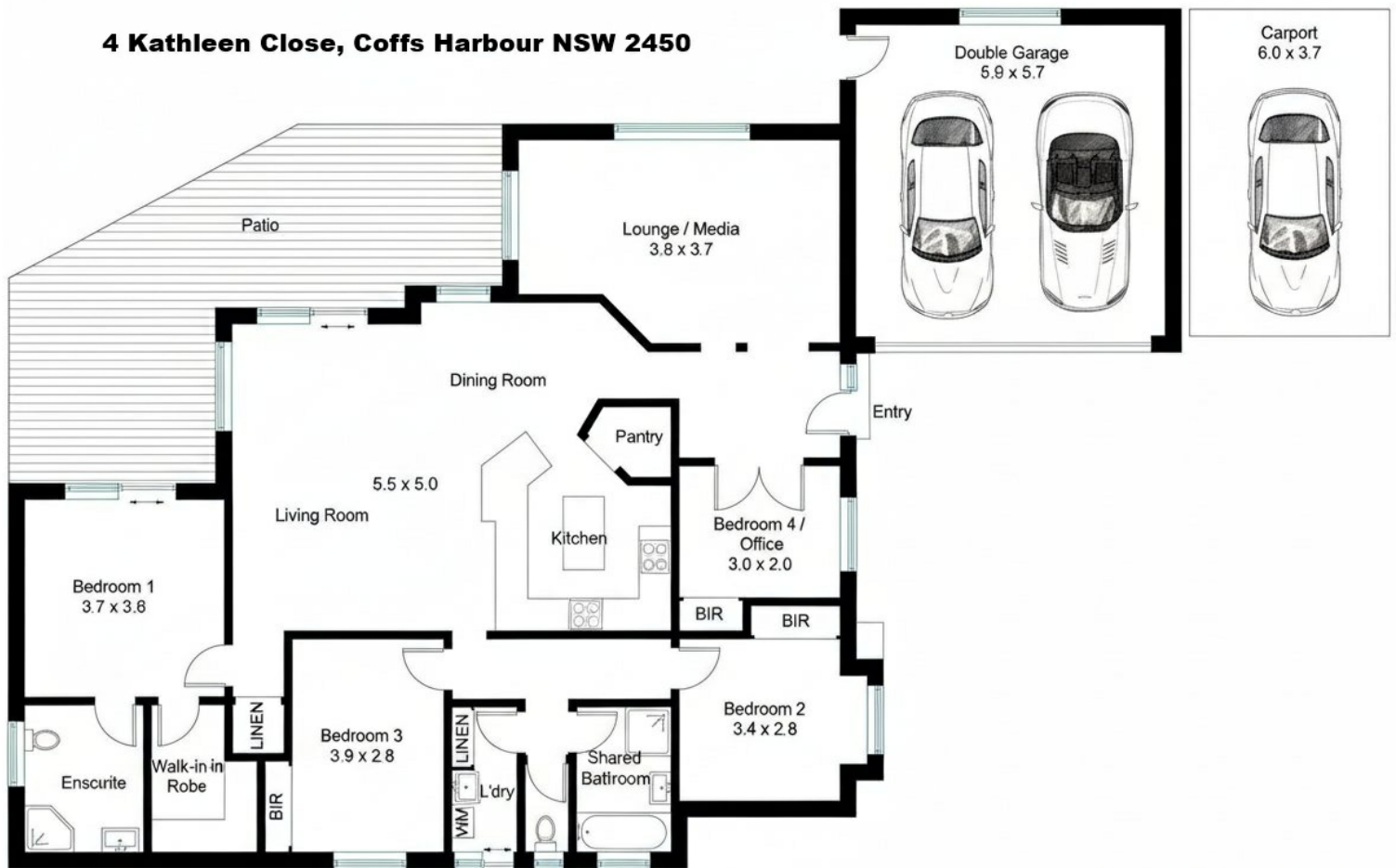
Greg Renet

0411121579

greg.renet@atrealty.com.au

www.atrealty.com.au

4 Kathleen Close, Coffs Harbour NSW 2450



This floor plan is provided as a guide only. It is not to scale and all areas, dimensions, fixtures and fittings are approximate. No warranty is given as to the accuracy of the layout or measurements and interested parties should rely on their own enquiries.



Disclaimer: Please note this floor plan is for marketing purposes and is to be used as a guide only. All dimensions are estimates only and may not be exact measurements.