



SOLD

FANTASTIC HIGH FLOOR APARTMENT WITH SWEEPING HINTERLAND VIEWS

Enjoy Broadwater living at its best in this contemporary 6th level apartment, offering spectacular panoramic views of The Hinterland and The Broadwater from the northern end of the balcony. This great apartment is flooded with natural light.

Silvershore is situated opposite the sandy Broadwater foreshore.

The spacious open plan living/dining area leads out to a large balcony that is ideal for entertaining or simply sitting back, relaxing with a glass of wine and enjoying the sunset views. The modern entertainer's kitchen has mirrored splashbacks, stainless steel appliances - gas cooktop & dishwasher and stone benchtops. Plus, it has ample space to install a large kitchen island if you'd like.

The Master bedroom leads directly out to the spacious balcony via floor-to-ceiling, stacking patio doors, has windows looking towards The Broadwater and a walk-through wardrobe to the 2-way/en-suite bathroom.

Bedroom 2 has windows looking to the Broadwater

This contemporary apartment is positioned on Marine Parade with direct access to the Broadwater, walkways and parks and is only a stroll to restaurants and cafes, amenities and shops. Easy access to Griffith University, Gold Coast University Hospital, and Runaway Bay Shopping Centre and Harbour Town for outlet shopping.

The perfect apartment for home or investment. You can stay when it suits you and holiday let when you want to, rent out permanently or live in; the choice is yours.

Apartment Features

- European laundry
- Ducted and zoned air-conditioning throughout
- 1 underground parking space
- Low Body Corporate approximately \$112pw approx
- Currently tenanted for \$545pw. until February 15th 2026

2 BED | 1 BATH | 1 CAR

PRICE:
\$865,000

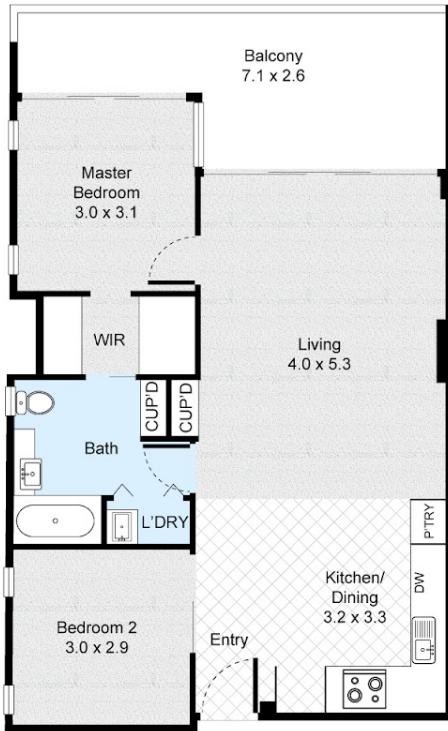
OPEN FOR INSPECTION:
N/A



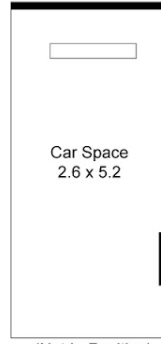
Francine Setchell
0408143464
francine@atrealty.com.au
www.atrealty.com.au

Unit 601, 430 Marine Parade, Biggera Waters

2 Bed 1 Bath 1 Car

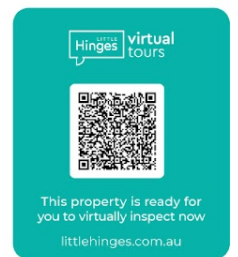


FLOOR PLAN



CAR SPACE

Internal : 75m²
External : 15m²
Balcony : 17m²
Total : 107m²



All information contained herein is gathered by Little Hinges. Whilst the scanning technology is highly reliable, we cannot guarantee its accuracy and interested parties should rely on their own enquiries.

Disclaimer: Please note this floor plan is for marketing purposes and is to be used as a guide only. All dimensions are estimates only and may not be exact measurements.

Francine Setchell
0408143464
francine@atrealty.com.au
www.atrealty.com.au

