

FOR SALE

AN APARTMENT THAT LIVES BEYOND ITS WALLS

Resort-style living, expansive entertaining, and sea views — what sets this apartment apart is not just the renovation, but how the space works.

The open-plan living area extends seamlessly to an oversized patio, creating a true indoor-outdoor connection rarely found in apartment living. This is space you will actually use — for entertaining, unwinding, or simply enjoying fresh coastal air with peaceful hinterland and sea outlooks.

Inside, the apartment has been comprehensively upgraded with a clear focus on quality, longevity, and restraint. Clean lines, refined finishes, and a calm coastal palette create a home that feels settled, considered, and easy to live in.

The kitchen has been designed to support both everyday living and entertaining without dominating the space. Dual ovens, quality appliances, generous bench space, and excellent storage allow it to function beautifully while remaining visually balanced.

The master bedroom includes built-in storage and a fully renovated ensuite. A second bedroom and upgraded main bathroom provide flexibility for guests, working from home, or long-term comfort.

Beyond the apartment, The Nautilus offers resort-style amenities including a heated pool, spas, sauna, gym, and landscaped grounds. With the beach just moments away and cafés and shops nearby, the lifestyle is relaxed, convenient, and well established.

Two secure side-by-side car parks and a private storage locker complete an offering that combines space, quality, and practicality — without compromise.

An opportunity of this calibre is seldom available and not to be missed - this is not just luxury — it is living well!

2 BED | 2 BATH | 2 CAR

PRICE:

Asking price \$1,190,000

OPEN FOR INSPECTION:

N/A

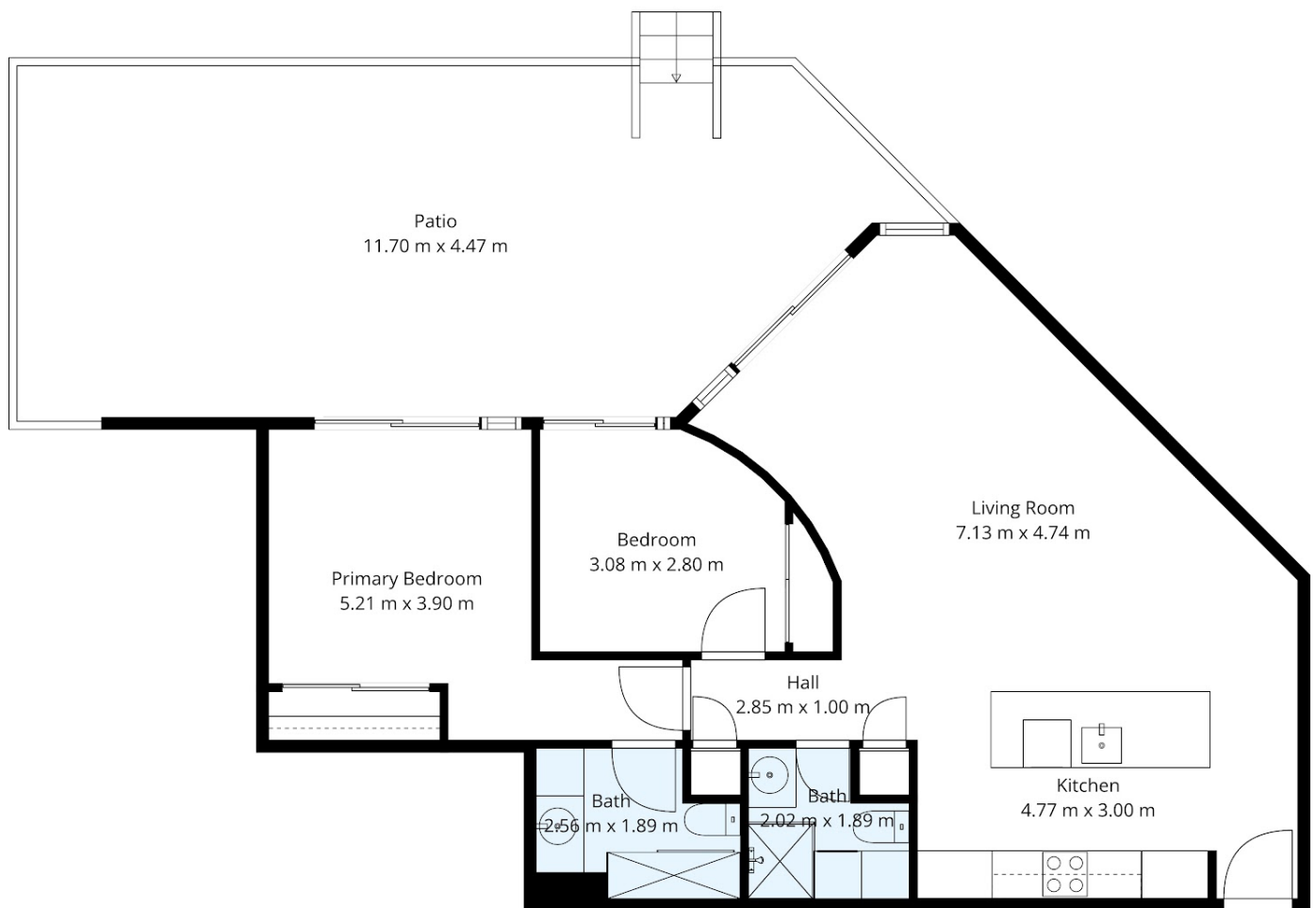


Deb Maurer

0212788940

deb.maurer@rrea.co.nz

www.rrea.co.nz



Plans Are Indicative Only For Marketing Purposes.



Disclaimer: Please note this floor plan is for marketing purposes and is to be used as a guide only. All dimensions are estimates only and may not be exact measurements.