



# FOR SALE

## 5BR FAMILY HAVEN ON 5586M2 WITH BEATIFUL GARDENS

Escape to country charm at 4 Hunter Close, Drouin — a magnificent five-bedroom family sanctuary set on an expansive 5,586m<sup>2</sup> block in the picturesque hills of West Gippsland. Designed for growing families, this impressive residence perfectly balances space, comfort and character, offering three generous living areas, a master suite with WIR and ensuite, built-in wardrobes throughout, and beautiful floorboards that flow seamlessly across the home. Year-round comfort is assured with ducted heating, woodfire and split systems, while a third living space or home office adds flexibility for modern family living.

Step outside to your own private oasis, where the fully fenced grounds provide security, privacy and endless space to enjoy. Entertain with ease on the spectacular deck and outdoor entertaining area, surrounded by established gardens and open spaces for children and pets to explore. Additional features include separate shedding, a double garage, dishwasher, broadband connectivity and a 6.6kW solar system for energy-efficient living.

Located just 90 kilometres east of Melbourne, Drouin is renowned for its welcoming community spirit, beautiful flowering gum-lined streets and excellent lifestyle appeal. With convenient access to the Princes Highway and railway line, this stunning property offers the perfect blend of peaceful country living and modern convenience.

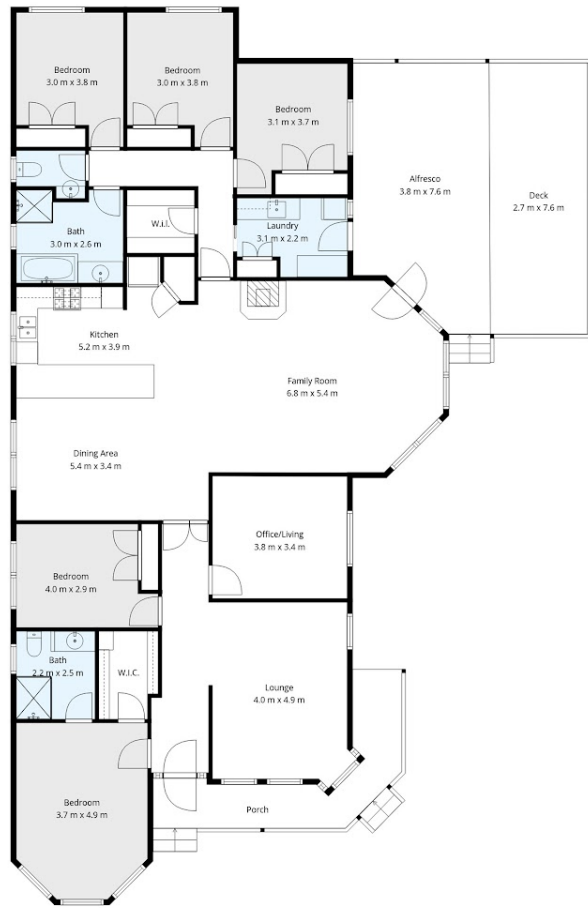
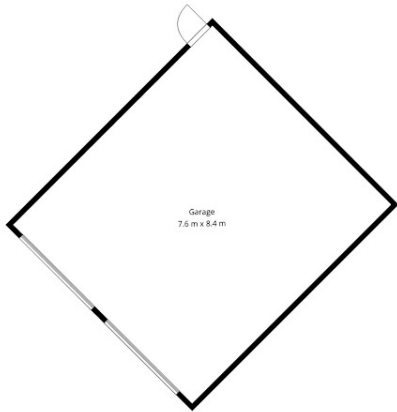
5 BED | 2 BATH | 2 CAR

PRICE:  
\$1,185,000 - \$1,250,000

OPEN FOR INSPECTION:  
May 23 at 11:00am - 11:30am



**Mel Ahearn**  
**0409183763**  
mahearn@atrealty.com.au  
[atrealtypropertysalesgippsland.com.au](http://atrealtypropertysalesgippsland.com.au)



## 4 Hunter Close, Drouin

Whilst every attempt has been made to ensure the accuracy of the floorplan contained here all measurements are approximate and are for illustration purposes only. No responsibility is taken for any error, omission or misstatement



Disclaimer: Please note this floor plan is for marketing purposes and is to be used as a guide only. All dimensions are estimates only and may not be exact measurements.