

SOLD

EASY LIVING, BRILLIANT LOCATION!

*OFFERS CLOSE 4PM TUESDAY 20/1/2026 - The owner reserves the right to sell prior

This modern family home is designed for comfortable living, low-maintenance upkeep, and everyday convenience. Positioned close to parks, schools, shopping, and transport, it offers an ideal blend of space, functionality, and location for families, first-home buyers, or investors.

Property Overview

- Single-level home with generous layout
- Low maintenance 341m2 block
- Three spacious bedrooms BIR's
- Two bathrooms plus separate WC
- Dual living areas
- Double garage with Shoppers entrance
- Private rear courtyard with alfresco
- Immaculately clean, freshly painted throughout and fitted with brand-new carpets

Living and Entertaining

At the front of the home the first living zone is a separate lounge that provides a quiet retreat or formal living space. The second living zone is positioned at the rear of the home and is centred around open plan living, dining, and kitchen area.

Natural light enhances the sense of space, while the layout allows for relaxed family living and effortless entertaining. Sliding doors connect the interior to an outdoor alfresco, perfect for weekend barbecues or quiet evenings at home.

Kitchen Features

- Fabulous cooks kitchen with lots of bench space and storage
- Gas cooktop and electric wall oven
- Double stainless steel sink
- Extra-large fridge recess
- Large corner pantry

Bedrooms and Bathrooms

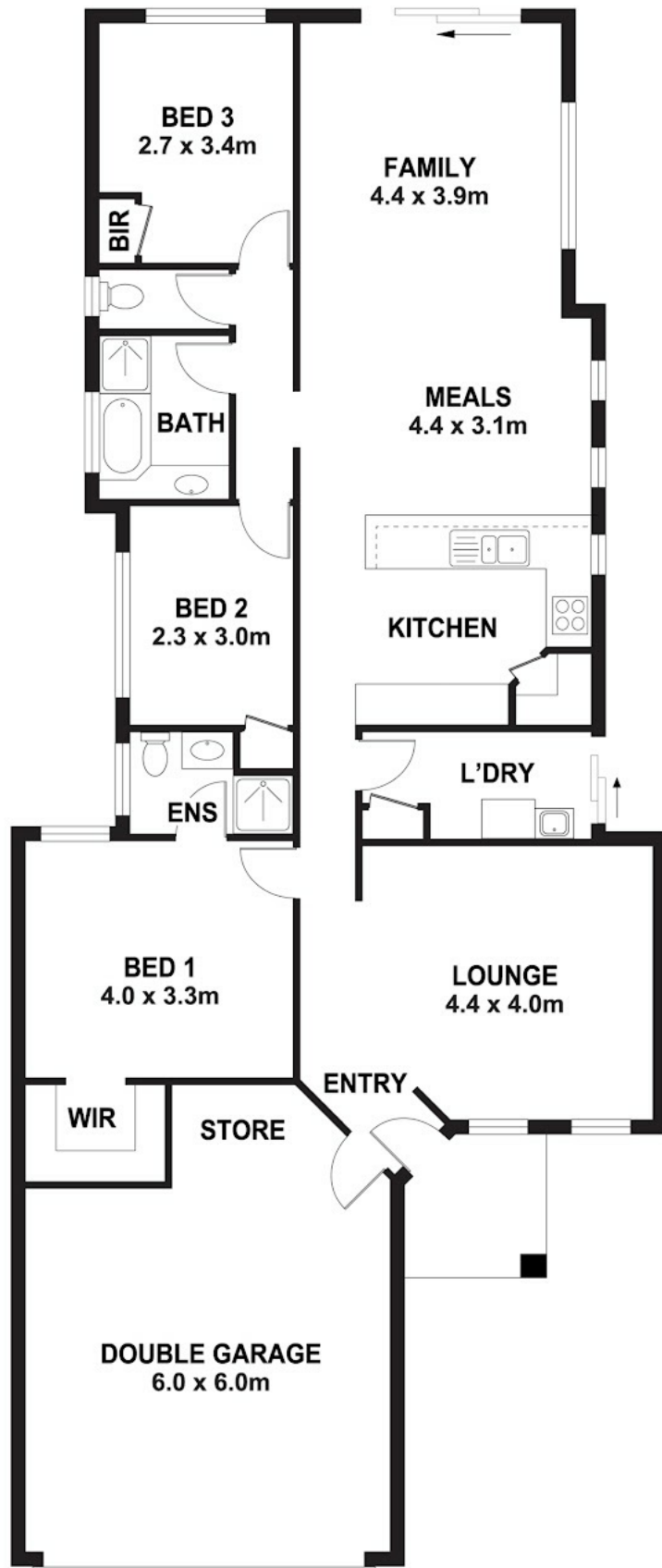
3 BED | 2 BATH | 2 CAR

PRICE:
\$965,000

OPEN FOR INSPECTION:
N/A



Jill Groves | Chloe Leggett Team
0408765240
jillgroves@atrealty.com.au
www.atrealty.com.au



Disclaimer: Please note this floor plan is for marketing purposes and is to be used as a guide only. All dimensions are estimates only and may not be exact measurements.

@realty 2 Felpham Ct, Success

Jill Groves | Chloe Leggett Team

0408765240

jillgroves@atrealty.com.au

www.atrealty.com.au

Not to scale • All measurements are approximate • Drawn for presentation purposes only

@realty