

10 ARLINGTON COURT, CORINELLA, VIC, 3984



FOR SALE

PEACEFUL COURT LIVING WITH SPACE, SUSTAINABILITY & COASTAL CHARM

Tucked away in a quiet and family-friendly court, this well-maintained home at 10 Arlington Court, Corinella delivers space, comfort and practicality in a relaxed coastal setting. Offering 3–4 bedrooms, the flexible floorplan is ideal for families, retirees or those working from home. The heart of the home is the light-filled open-plan living and dining area, complemented by a separate rumpus room—perfect for kids, guests or a second living zone. Outside, the picturesque, established gardens create a private and tranquil setting, all securely fully fenced, ideal for children and pets. Car accommodation and storage are well catered for with an enclosed carport providing secure parking, plus a garage/workshop for hobbies, tools or additional storage. Comfort and efficiency are key features, with split-system heating and cooling, a 5kW solar system, and a water tank, helping reduce ongoing living costs while supporting a sustainable lifestyle.

Property highlights include:

- 3–4 bedrooms with flexible layout
- Open-plan living and dining
- Separate rumpus room
- Enclosed carport with secure parking
- Garage/workshop
- Split-system heating & cooling
- 5kW solar system
- Water tank
- Fully fenced, landscaped gardens
- Quiet court location

Corinella is a tightly held coastal community known for its peaceful atmosphere, foreshore walks, fishing, boating and friendly village feel. Located approximately 90 minutes from Melbourne, the region offers easy access to Grantville's shopping, cafes and schools, while enjoying the natural beauty of Western Port Bay and the wider Bass Coast.

Whether you're seeking a permanent residence, a coastal escape or a smart lifestyle investment, this property presents an outstanding opportunity to enjoy space, serenity and seaside living.

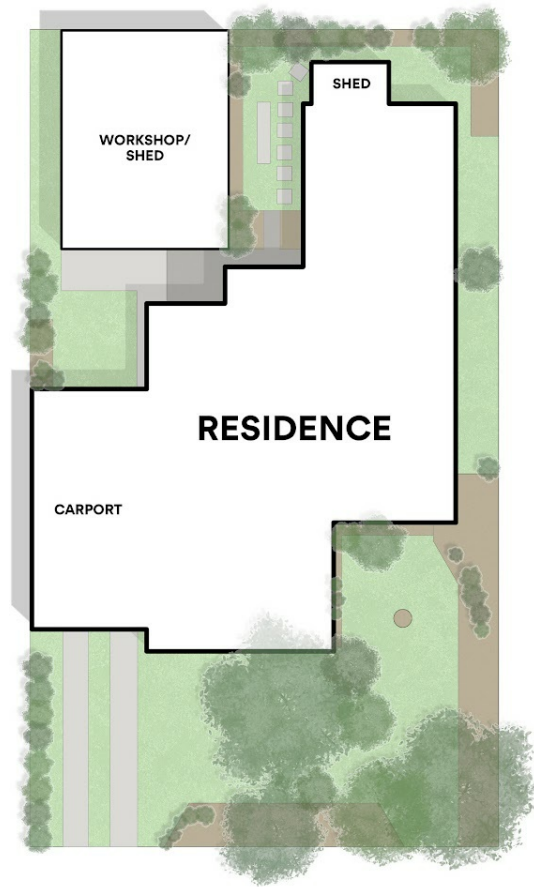
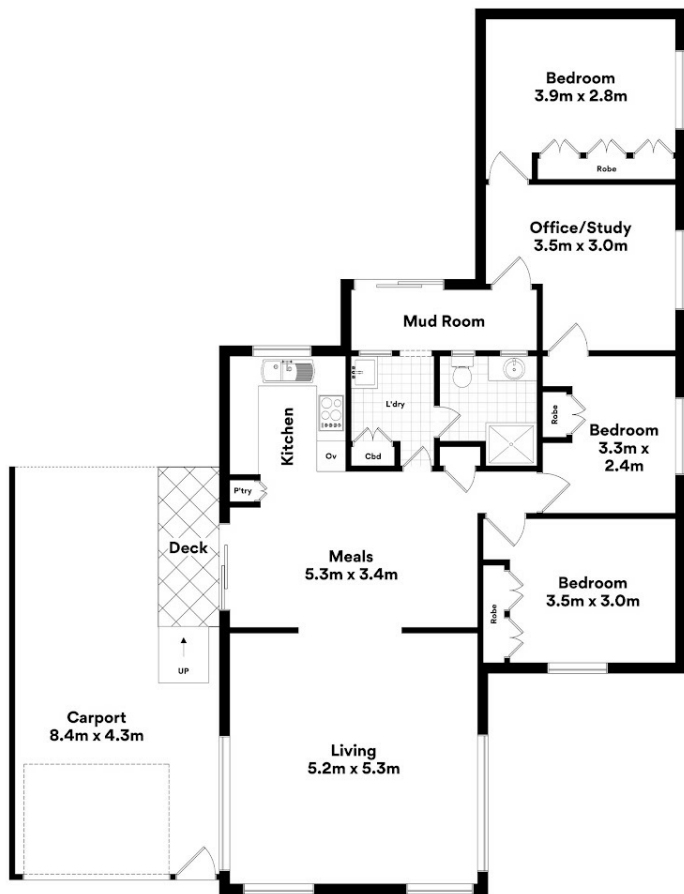
3 BED | 1 BATH | 3 CAR

PRICE:
\$575,000 - \$625,000

OPEN FOR INSPECTION:
Apr 4 at 11:00am - 11:30am



Daniel Leskie
0400503300
danielleskie@atrealty.com.au
www.atrealtypropertyexperts.com.au



10 Arlington Crt, Corinella

Whilst every attempt has been made to ensure the accuracy of the floorplans contained here, measurements of doors, windows and rooms are approximate and no responsibility is taken for any error, omission or misstatement. These plans are for representation purposes only.

Disclaimer: Please note this floor plan is for marketing purposes and is to be used as a guide only. All dimensions are estimates only and may not be exact measurements.