



# FOR SALE

## 24 ACRES + 4 BEDROOM FARM HOUSE & HUGE SHED.

" Expressions Of Interest By 5pm Monday February 23rd 2026 "

Escape to your own private rural sanctuary on this magnificent 24 acre property in the heart of Gordonvale's sugarcane country. Property on " Crossland Road " are highly sought after, and this property is being offered to the market for the 1st time in over 70 years. This substantial property with a 4 bedroom farm house and huge shed, offers the perfect blend of comfortable family living and endless opportunities for the rural lifestyle you've been dreaming of. The home features four very generously sized bedrooms, perfect for growing families or those needing extra space for guests or a home office. There is a central living area, timber floors throughout, sun room, kitchen and single bathroom services. The massive shed offers an abundance of storage solutions for all your rural equipment, vehicles, and recreational toys, while the dedicated workshop space is ideal for the handyman or those running a home based business. Gordonvale is a thriving township with shops, cafes, sporting facilities, medical services and excellent schools from prep to year 12, including Gordonvale State Primary & Secondary, St Michael's Catholic Primary and Cairns Adventist College.

This property represents a rare opportunity to secure substantial acreage in one of Far North Queensland's most desirable rural locations. Whether you're looking to establish a small farm, enjoy hobby farming, keep horses, or simply want space for the children to roam free, this property offers endless possibilities. Wake up each morning to the sounds of nature, enjoy spectacular sunrises over the cane fields, and experience the peace that comes with having space to breathe. Don't miss this exceptional opportunity to secure your slice of the Gordonvale countryside. Properties of this calibre, offering this much space and potential, are rarely available in such a sought-after location.

For More Information  
Contact Brian Bolton on 0402 440 098  
@realty

Disclaimer: Information is sourced from reliable providers but not guaranteed. The Agent and Office assume no liability for discrepancies. Buyers should independently verify all details, including floor plans, measurements, and layouts.

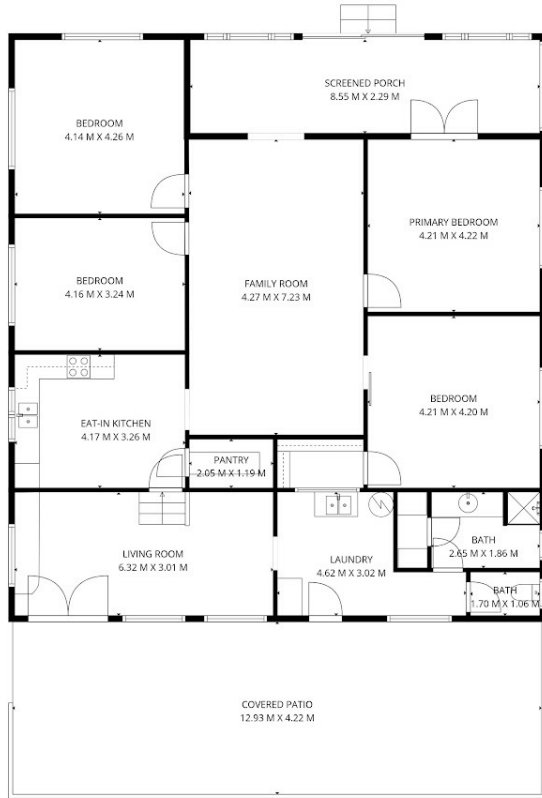
4 BED | 1 BATH | 2 CAR

PRICE:  
Contact Agent

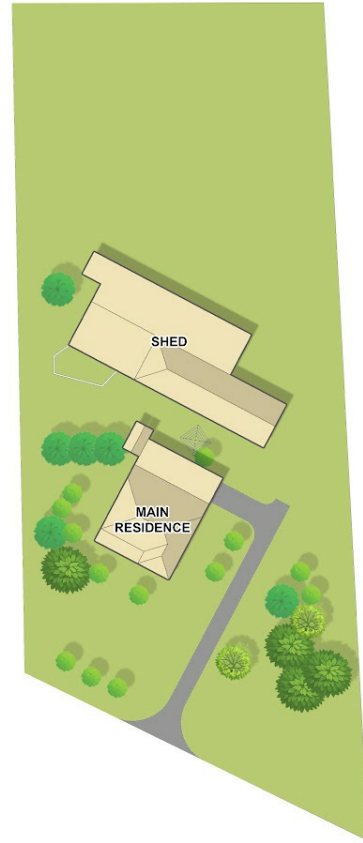
OPEN FOR INSPECTION:  
N/A



**Brian Bolton**  
**0402440098**  
brianbolton@atrealty.com.au  
[www.atrealty.com.au](http://www.atrealty.com.au)



FLOOR PLAN



SITE PLAN

49 CROSSLAND ROAD, GORDONVALE

Disclaimer: Please note this floor plan is for marketing purposes and is to be used as a guide only. All dimensions are estimates only and may not be exact measurements.