



SOLD

SOLD BY THE KRIS & AMANDA TEAM

Positioned in a quiet cul-de-sac within one of Caboolture's most popular neighbourhoods, 6 Kleo Court presents an outstanding opportunity to secure a well-appointed family home just minutes from Central Lakes, Pumicestone State School and the local shopping precinct.

Offering a practical semi-open plan layout, the home features multiple living zones designed to accommodate both everyday family life and relaxed entertaining. The modern kitchen is well positioned adjacent to the main living and dining areas, featuring electric appliances, ample bench space and generous storage, making it both functional and family-friendly.

With four generously sized bedrooms, including a king-sized master with walk-in robe and private ensuite, the home delivers comfort and functionality in equal measure. Set on a spacious 724sqm block with a low-maintenance yard and covered outdoor entertaining area, this is a property that will suit families, upsizers and investors alike.

Boasting approximately 214sqm under roof, homes of this size, quality and location are becoming increasingly hard to find.

Property highlights include:

- Quality brick and tile construction
- Four well-proportioned bedrooms with built-in robes and ceiling fans
- King-sized master suite with walk-in robe and ensuite
- Family bathroom with separate bath, shower and toilet
- Modern kitchen with electric cooking, built-in pantry, dishwasher space and excellent storage
- Large central lounge plus open-plan living and dining area
- Laundry with built-in cabinetry and direct side-yard access
- Covered outdoor entertainment area
- Security screens throughout
- Air-conditioned living space
- Generous 724sqm block
- Quiet cul-de-sac setting

Homes in this location are in high demand and selling FAST!!

To avoid missing out, contact Kris and Amanda today to register your interest.

4 BED | 2 BATH | 2 CAR

PRICE:
\$951,951

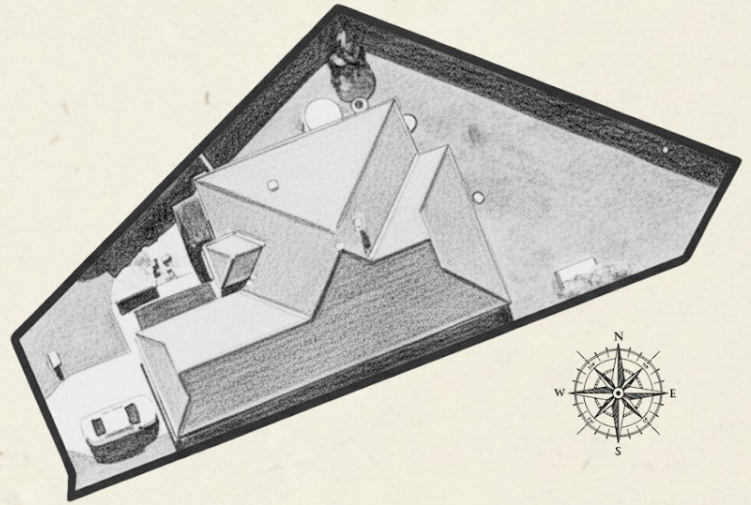
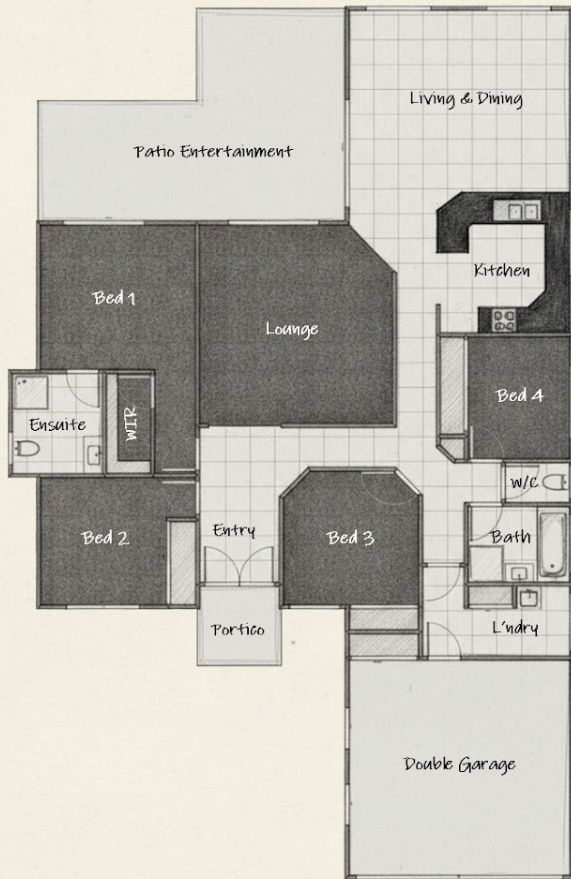
OPEN FOR INSPECTION:
N/A



Amanda Roberts
0437338665
amanda.roberts@atrealty.com.au
www.atrealty.com.au

6 Kleo Court, Caboolture

4 Bed | 2 Bath | 2 Car | 72.4sqm Block | 2.14sqm Under Roof



@realty

Whilst every attempt has been made to ensure accuracy of the floor plan contained here, measurements of doors, windows, rooms and any other items are approximate and no responsibility is taken for any error, omission, or misstatement. This plan is for illustrative purposes only and should be used as such by any prospective purchaser.

Disclaimer: Please note this floor plan is for marketing purposes and is to be used as a guide only. All dimensions are estimates only and may not be exact measurements.

Amanda Roberts
0437338665
amanda.roberts@atrealty.com.au
www.atrealty.com.au

@realty