



SOLD

VERSATILE DUAL-LIVING OPPORTUNITY WITH STRONG RENTAL APPEAL

Positioned behind a high, fully fenced frontage, 5 Gillie Crescent, Morwell presents an outstanding opportunity for investors or families seeking flexible accommodation for parents or adult children. The main residence offers three generous bedrooms filled with natural light, all served by a central bathroom. At the heart of the home, a spacious living room flows effortlessly into the kitchen and dining area, designed for both everyday convenience and entertaining. A practical mudroom/study nook and laundry with separate toilet add functional space, while the rear pergola provides a perfect sheltered area for outdoor relaxation. Privately located and fully self-contained, the separate unit provides excellent income potential or independent living. Complete with its own fenced yard, this space features a large bedroom with built-in robe and study area, an open-plan kitchen, dining and living zone, and a full kitchen that has seldom been used. Accessibility and comfort are well catered for with split system heating and cooling, a bathroom with handicap rail and an electric chair lift servicing the stairs. Ample car parking space is provided for both homes. With two dwellings on one property and multiple living configurations available, this is a rare and flexible offering in a convenient Morwell location.

Key Features:

- Dual-living property with two separate dwellings
- Ideal for investors, extended families or additional rental income

Main Residence:

- Three large bedrooms
- Ducted heating plus split system heating & cooling
- Kitchen with electric stove and oven
- Kitchen and dining area
- Large undercover outdoor entertaining area
- Mudroom or study nook

4 BED | 2 BATH | 0 CAR

PRICE:
\$620,777

OPEN FOR INSPECTION:
N/A

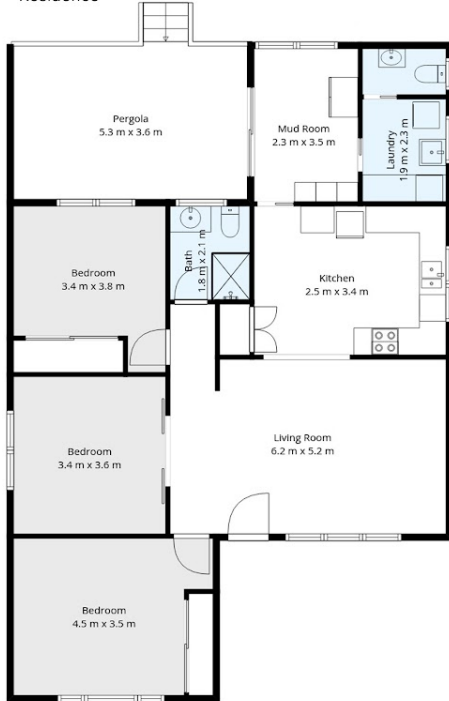


Jeff Dalzotto
0411601046

jeffd@atrealty.com.au

atrealtypropertysalesgippsland.com.au

Residence



Unit



5 Gillie Crescent, Morwell

Whilst every attempt has been made to ensure the accuracy of the floorplan contained here all measurements are approximate and are for illustration purposes only. No responsibility is taken for any error, omission or misstatement.



Disclaimer: Please note this floor plan is for marketing purposes and is to be used as a guide only. All dimensions are estimates only and may not be exact measurements.