



SOLD

UNDER OFFER - MULTIPLE OFFERS BULL CREEK BEAUTY WITH FREO VIBES

Perfectly presented with the most beautiful garden setting, this 4 bedroom, 2 bathroom family home offers enormous appeal.

Sitting proudly on a generous 790m² block, this is the kind of land size that's getting harder to find — giving you space now and real potential for the future in sought-after Bull Creek.

FEATURES INCLUDE:

- Impressive Master bedroom suite with stunning timber floorboards, spacious WIR & renovated ensuite, French windows & door give private access to & overlook a serene, perfumed garden.
- Bedrooms 2,3,4 all generous size with BIR's & large windows
- Open plan living with galley style kitchen with walk-in pantry, 4 burner gas hob, rangehood, wall oven, dishwasher, Family dining & lounge
- Surprise, Butler's pantry integrated with the laundry, lots of cupboard space, wooden bench top, single sink
- Large, light filled formal lounge room with outlook to front gardens
- Quaint office/studio with plumbed in sink (was once operated as a beauty room)
- Renovated family bathroom with separate shower & bath, glass shower screen, quality floor to ceiling tiling, wall hung vanity & skylight
- 2 toilets
- Gas hot water system
- Money saving solar panels
- Ducted evaporative air-conditioning, ceiling fans, gas bayonets
- Stunning timber flooring & timber framed windows throughout
- Single Garage with double car parking in driveway
- Extra large, gabled roof alfresco, paved, opening out to stunning gardens
- Council Rates: \$1,944.29 approx. FY25-26 | Water Rates: \$1,355.35 approx. FY24-25
- Built 1970
- Land size: 790m²
- Zoning: R20
- Bull Creek Primary School & Leeming Senior High School zone.

OUTDOORS:

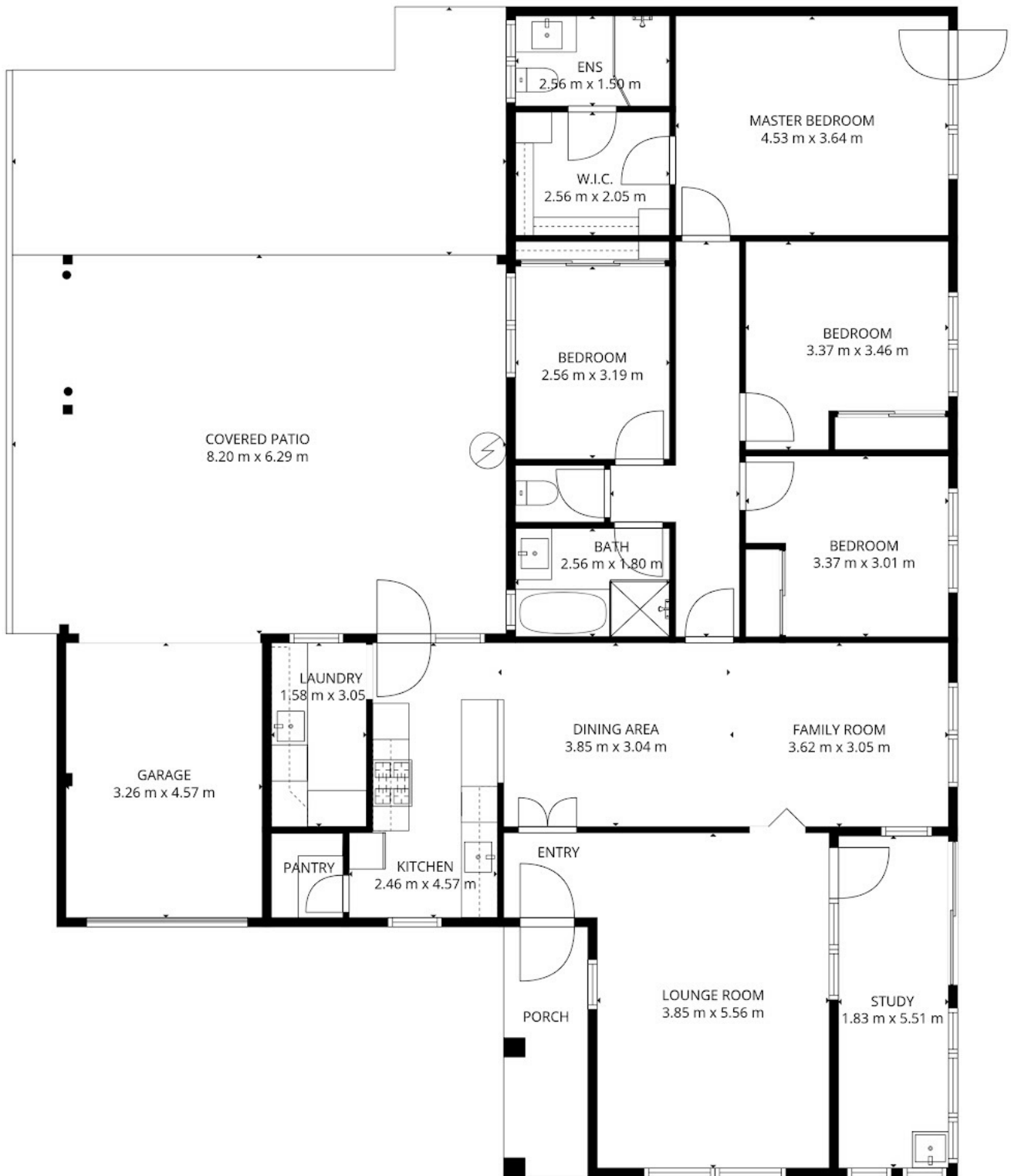
4 BED | 2 BATH | 3 CAR

PRICE:
\$1,535,000

OPEN FOR INSPECTION:
N/A



Jill Groves | Chloe Leggett Team
0408765240
jillgroves@atrealty.com.au
www.atrealty.com.au



Disclaimer: Please note this floor plan is for marketing purposes and is to be used as a guide only. All dimensions are estimates only and may not be exact measurements.