



## FOR SALE

### LUXURIOUS FAMILY HOME IN PRESTIGIOUS CASTLE HILL

Surrounded by quality homes at the end of a quiet cul-de-sac, this impressive residence has been fully renovated to deliver exceptional family living. Designed for those seeking space, privacy and everyday convenience, the home is just minutes from Castle Towers, restaurants and Metro stations, with easy access to parks, schools and the M2.

- Generous proportions offering multiple living and dining areas
- Formal lounge and dining room, family living space and upstairs rumpus room
- Beautifully crafted interiors with premium finishes and fittings
- Light-filled layout capturing leafy outlooks and district views
- Covered paved alfresco area ideal for relaxed outdoor entertaining
- Landscaped low-maintenance gardens with easy-care level lawns
- Renovated kitchen with granite benchtops and splashback
- Bosch dishwasher, walk-in pantry and casual breakfast bar
- Five top floor bedrooms each with built-ins and far reaching views
- Sixth bedroom or home office positioned on the ground floor
- Grand master suite with double doors and walk-in wardrobe
- Renovated ensuite featuring heated towel racks and dual wall-hung vanity
- Stylish fully tiled main bathroom with luxurious freestanding bath
- Renovated powder room conveniently located on the ground floor
- Ducted air conditioning and vacuum, ample storage throughout
- Internal access to double garage plus plenty of off street parking
- Solar panels and 13.5kw battery suitable for EV charger
- Easy walk to express city buses located at the end of the street
- Moments to Eric Mobbs playing fields and Koolong Reserve
- Close to Gilroy College and zoned for Baulkham Hills North Public

5 BED | 2 BATH | 3 CAR

PRICE:  
Auction

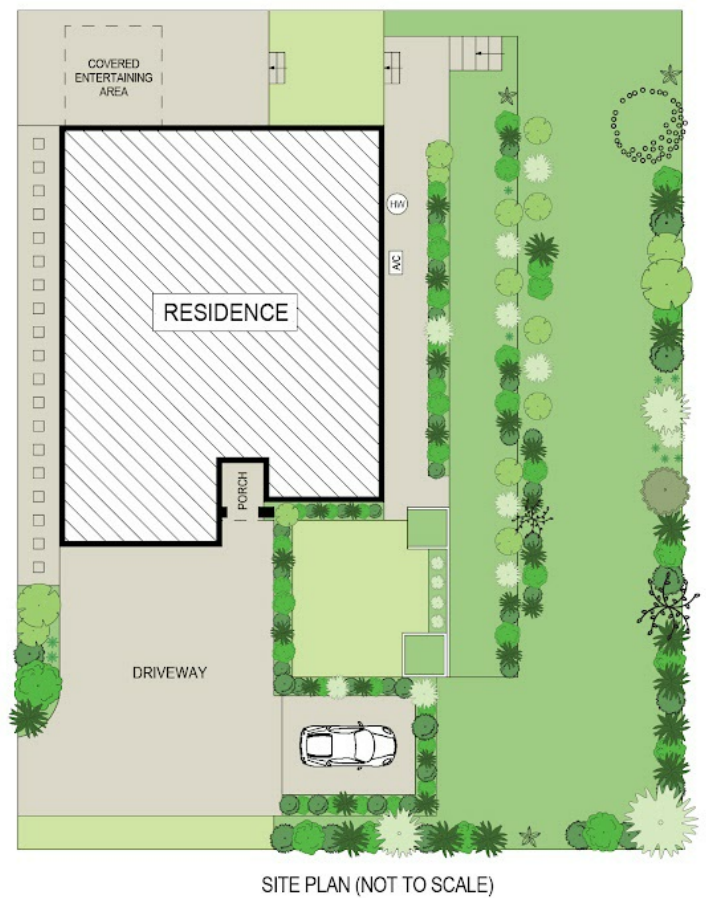
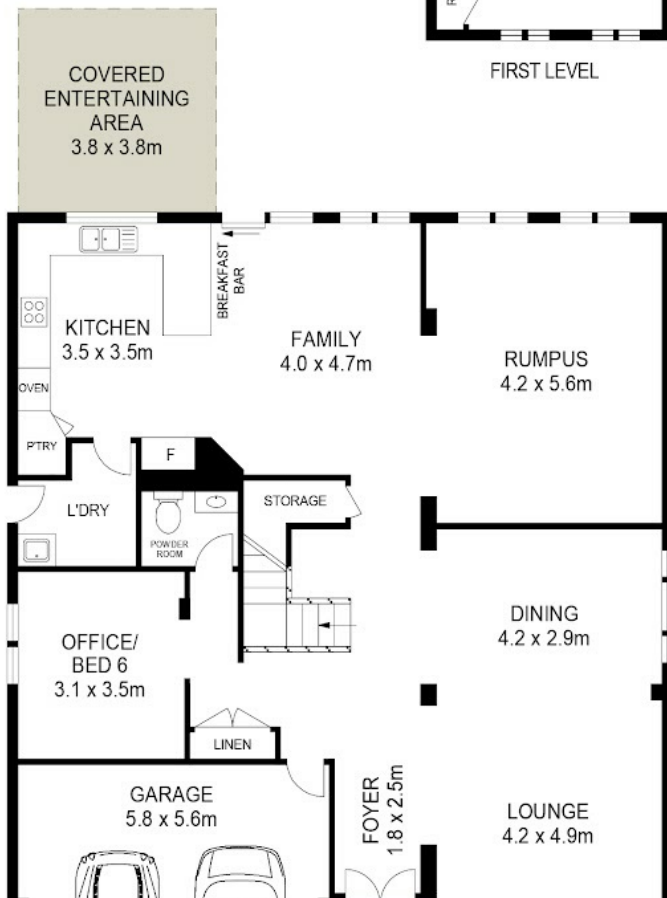
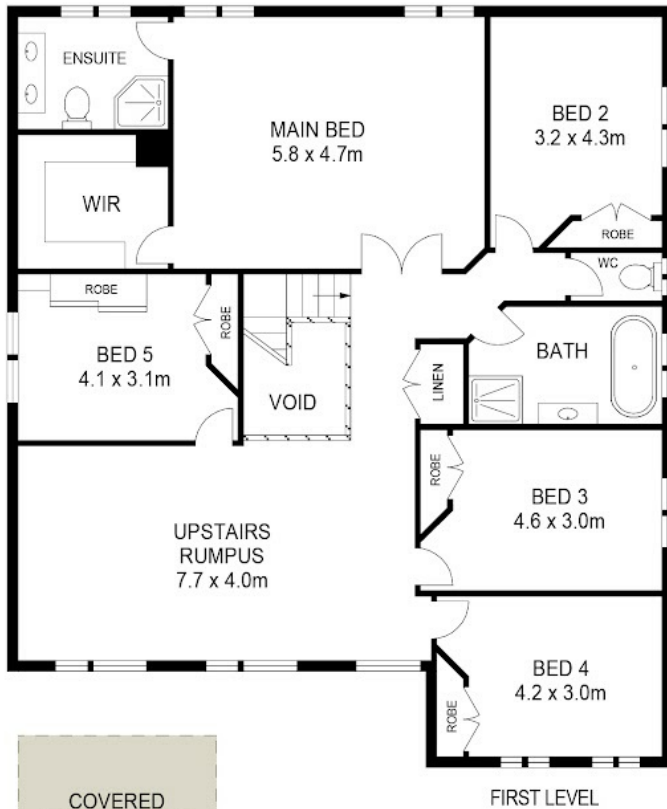
OPEN FOR INSPECTION:  
Apr 4 at 1:15pm - 1:45pm  
Apr 4 at 9:30am - 10:00am



**David Choy**  
**0411196328**  
davidchoy@hillsprestige.com.au  
www.hillsprestige.com.au

DISCLAIMER: All dimensions are approximate and for illustrative purposes. Interested parties should rely on their own enquiries. Floor plan created by Onebox Media.

INT : 326 m<sup>2</sup>



Disclaimer: Please note this floor plan is for marketing purposes and is to be used as a guide only. All dimensions are estimates only and may not be exact measurements.