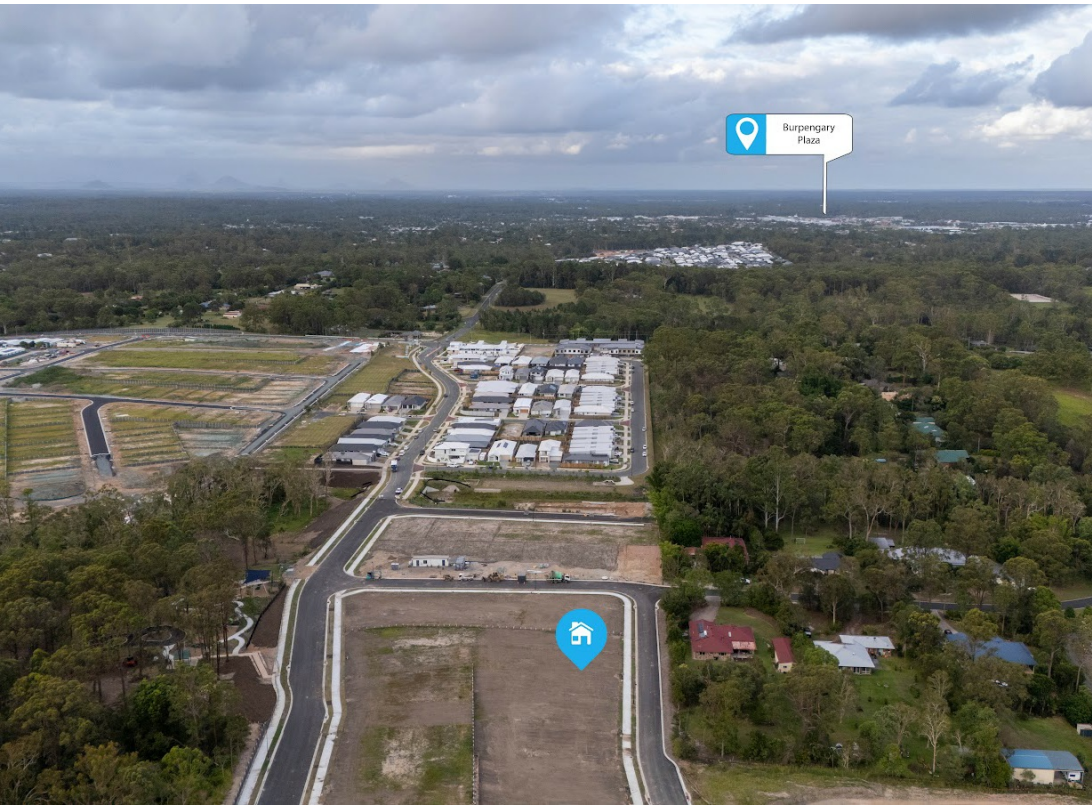


LOT 252 SERENADE STREET, NARANGBA, QLD, 4504



SOLD

REGISTERED 495M2 LAND AVAILABLE RIGHT NOW!

This exceptional parcel of land presents a rare opportunity to secure a premium block in one of Narangba's most sought-after estates La Vie. Perfectly positioned and surrounded by scenic outlooks, this generous allotment offers the ideal foundation to build your forever home.

Boasting a 495m² registered block with an impressive 12.5-metre frontage, this property provides excellent design flexibility while maximizing street appeal. The estate has been thoughtfully planned to support a vibrant and active lifestyle, with future parks, playgrounds and outdoor gym facilities all set to be within walking distance or a short drive.

Whether you're a family, investor, or owner-builder, this location delivers the perfect balance of convenience, lifestyle, and long-term value.

Location Highlights:

- Walking distance to the NEW park
- 2 minutes to local parks
- 7 minutes to Goodstart Early Learning
- 7 minutes to Narangba Train Station
- Within 7 minutes of four local schools
- 7 minutes to the local Equestrian Centre
- 8 minutes to medical facilities
- 8 minutes to major shopping precincts
- 9 minutes to the Bruce Highway
- 49 minutes to Brisbane CBD
- 55 minutes to the Sunshine Coast

Opportunities like this are limited — secure your place in a thriving, well-connected community today.

Mitchell Younger 0488 458 887

We make no representation or warranty as to the accuracy, reliability or completeness of the information relating to the property. Some information has been obtained from third parties and

0 BED | 0 BATH | 0 CAR

PRICE:
\$670,000

OPEN FOR INSPECTION:
N/A



Mitchell Younger
0488458887
mitchell.younger@atrealty.com.au
www.atrealty.com.au