

FOR SALE

PERFECT FIRST HOME OR INVESTMENT, 3BR HOME IN GROWING DEANSIDE!

Step into modern comfort at this beautifully appointed three-bedroom home on Hedgeley Avenue, perfectly positioned in the emerging suburb of Deanside. This thoughtfully designed residence offers the ideal blend of contemporary living and suburban tranquility, making it an excellent choice for growing families or astute investors looking to secure their place in one of Melbourne's newest communities.

The heart of this home showcases a welcoming lounge area that flows seamlessly throughout the living spaces, creating an inviting atmosphere for both daily life and entertaining. The well-appointed kitchen features quality built-in appliances including a dishwasher, making meal preparation and cleanup effortless. Three comfortable bedrooms provide ample accommodation, with the convenience of built-in wardrobes ensuring plenty of storage space for the whole family.

Climate control is taken care of year-round with the combination of ducted heating throughout and split system air conditioning, ensuring comfort in every season. The home's two bathrooms add convenience for busy households, while the practical layout maximizes both functionality and flow.

Step outside to discover your own private oasis featuring:

- A charming courtyard perfect for outdoor dining and relaxation
- Fully fenced property providing security and privacy
- Remote double garage offering secure parking and additional storage

Kids can walk across the road to school.

The compact yet functional 182 square meter block ensures easy maintenance while still providing space for outdoor enjoyment. The fully fenced perimeter creates a safe environment for children and pets to play freely.

Located in Deanside, you'll be positioned in a suburb with remarkable historical significance, built on land that was once part of the prestigious 40,000-acre Rockbank Estate owned by notable pastoralist William John Turner Clarke. This area carries a rich agricultural heritage dating back to the mid-1800s, with the historic Deanside Homestead Complex serving as an

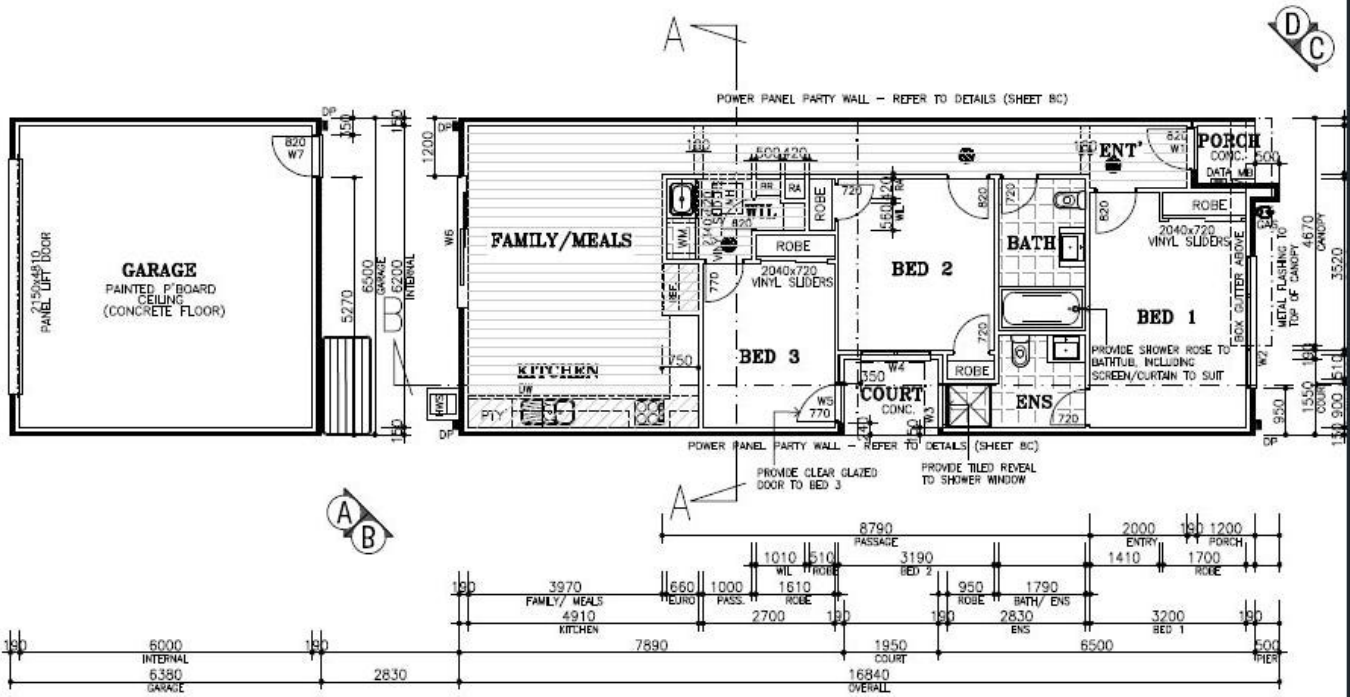
3 BED | 2 BATH | 2 CAR

PRICE:
\$530,000

OPEN FOR INSPECTION:
May 23 at 12:30pm - 1:00pm
May 30 at 12:30pm - 1:00pm



Stephen Beazley
0432496048
stephenbeazley@atrealty.com.au
www.atrealty.com.au



Disclaimer: Please note this floor plan is for marketing purposes and is to be used as a guide only. All dimensions are estimates only and may not be exact measurements.