



FOR SALE

ENDLESS OPPORTUNITY IN A PRIME LOCATION

Opportunity truly knocks with this well-presented and versatile home, perfectly positioned in one of Morphett Vale's most sought-after pockets. Set on a generous 736m² allotment(app) with a wide frontage of approximately 19.19 meters, this property offers outstanding potential for today and exciting possibilities for the future (STCC).

This lovely home is light, bright, and welcoming. Polished floorboards feature in the main living area, complemented by modern, fresh paintwork and quality carpet in the bedrooms, creating a comfortable and move-in-ready environment. A separate entry leads you into the spacious lounge, where a large picture window captures views of the front garden and allows an abundance of natural light to fill the room.

The functional kitchen is well equipped with a near-new oven and connects seamlessly to the adjoining dining area, making everyday living easy. From here, there is direct access to the backyard — perfect for entertaining, while the children play, or enjoying outdoor meals. Accommodation comprises of three generous bedrooms, all well-proportioned. The third bedroom adds extra versatility, featuring charming French doors that open directly onto the covered outdoor entertaining area, making it ideal as a guest room, home office, or second living space. Ceiling fans and a split-system air conditioner provide year-round comfort.

Outside, the home continues to impress. An extra-long garage with remote-controlled roller door offering flexibility to accommodate two small vehicles or one car plus ample workshop or storage space. The all-weather undercover entertaining area provides the perfect setting for family gatherings and celebrations all year round.

The expansive rear yard is a true blank canvas — level, spacious, and ideal for children and pets. With ample room to extend the existing home, add a shed, or explore subdivision potential, this property will appeal strongly to buyers seeking future value (STCC).

Conveniently located close to public transport, quality schools, and major shopping centers, this is a location that continues to be popular with families, investors, and downsizers alike.

Whether you're starting out, slowing down, or looking to invest or develop, this is a rare opportunity to secure a solid home on a large allotment in a highly desirable area.

Inspect with confidence — properties with this much potential don't last long.

Key Features

- Generous 736m² allotment with wide 19.19m frontage (approx.)
- Modern paintwork throughout
- Light-filled lounge with large picture window
- Polished floorboards to lounge room

3 BED | 1 BATH | 1 CAR

PRICE:

\$795,000-\$830,000

OPEN FOR INSPECTION:

N/A



Tricia Kernahan

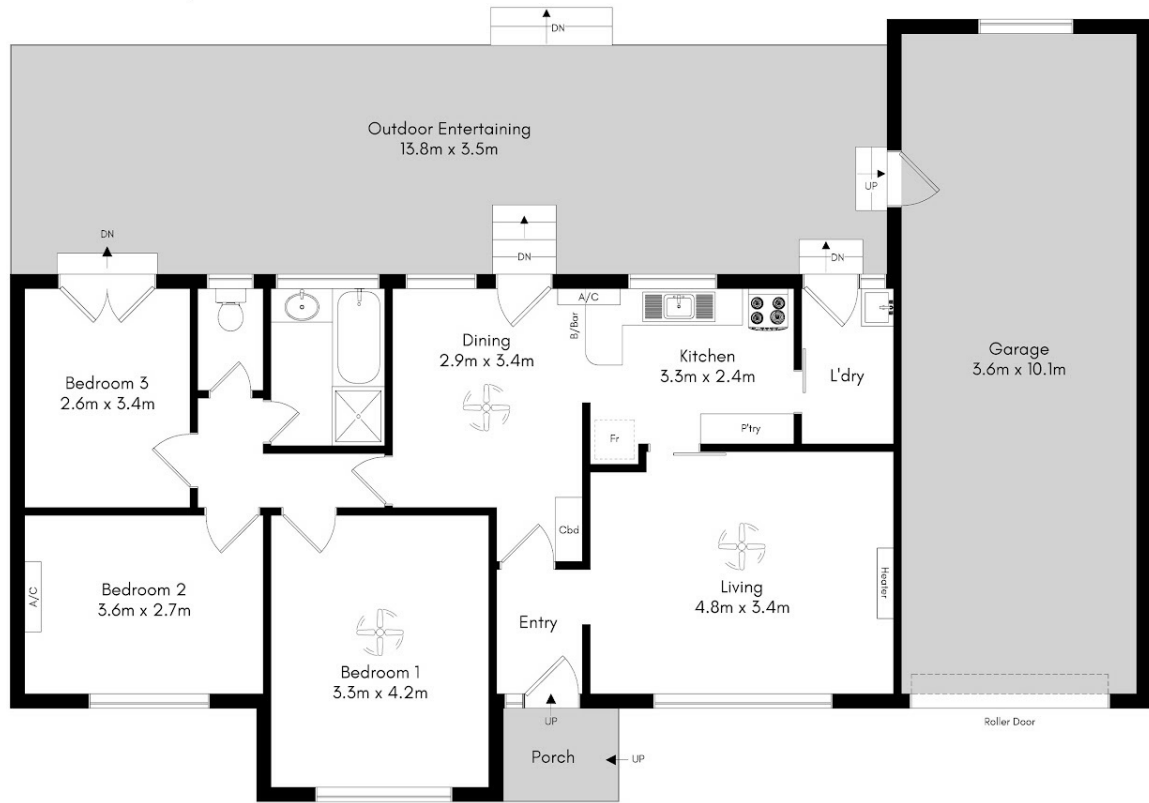
0457314206

tricia@atrealty.com.au

ffkrealstate.com.au

RLA: 269823

19 Inverness Ave Morphett Vale



Approximate Areas
Internal 95.5m² | External 49.6m² | Garage 41.5m² | TOTAL 186.6m²

Disclaimer: This drawing is for illustration purposes only. The information contained is NOT intended to be part of any contract. All measurements are approximate and details intended to be relied upon should be independently verified. While every effort has been made to verify the correct details in this drawing, neither the agent, vendor or illustrator accept responsibility for any errors, omissions, or wrongful inclusions.

Disclaimer: Please note this floor plan is for marketing purposes and is to be used as a guide only. All dimensions are estimates only and may not be exact measurements.