



FOR SALE

STYLISH TOWNHOUSE IN THE HEART OF GLENFIELD

This modern three-bedroom, 2.5-bathroom townhouse is perfectly positioned in sought-after Glenfield and ready for its next owners. The ground floor features a spacious open-plan kitchen, dining and living area that flows seamlessly to a sunny patio—ideal for relaxing or entertaining. A convenient guest toilet completes this level.

Upstairs offers two generous bedrooms with a central bathroom, while the top floor is dedicated to a private master suite with ensuite. All bedrooms include built-in wardrobes. The entire home is fitted out with quality roller blinds and double glazing throughout - ensuring warm and dry living year round.

Equipped with quality Fisher & Paykel appliances, including a heat pump, electric cooktop, oven, rangehood, dishwasher and fridge, as well as a modern insinkerator, the home combines comfort with modern convenience.

Enjoy a central location close to Glenfield Mall, parks, beaches, schools, and excellent public transport links to Takapuna, Smales Farm and the Auckland CBD. The property includes one allocated car park, visitor parking, and ample off-street options.

An ideal home for young couples or small families seeking easy, contemporary living on the North Shore.

FAQ:
Bedrooms: 3
Bathrooms: 2.5
Carparks: 1
Floor area: 86 sqm
Land area: 80 sqm (more or less)
Section: Freehold
Construction: Brick & Weatherboard
Year built: 2023
Cooking & Hot water: Electric
Heating: Heat Pump

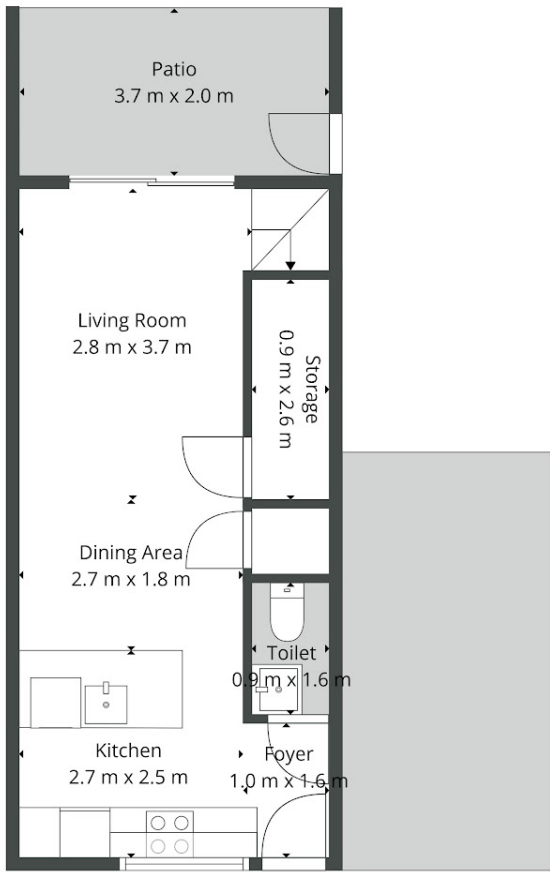
3 BED | 2 BATH | 1 CAR

PRICE:
Price by Negotiation

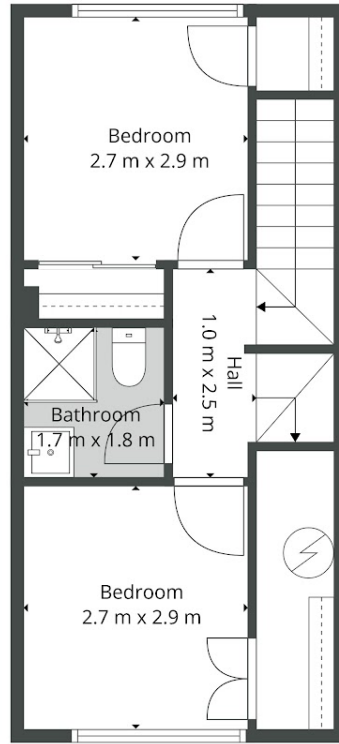
OPEN FOR INSPECTION:
N/A



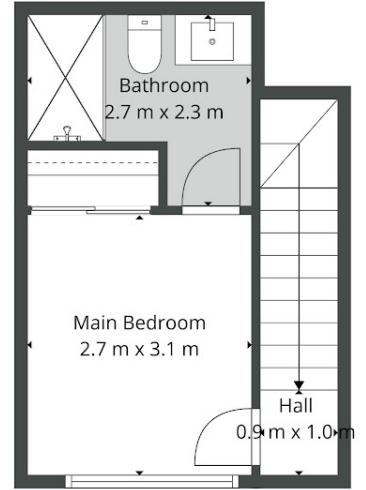
Todd Sherley
021686000
todd@eliterealty.net.nz
www.eliterealty.net.nz



1st Floor



2nd Floor



3rd Floor



Sizes And Dimensions Are Approximate, Actual May Vary.



Disclaimer: Please note this floor plan is for marketing purposes and is to be used as a guide only. All dimensions are estimates only and may not be exact measurements.