



**SOLD**

## TOP LEVEL STUDIO APARTMENT IN THE SOUGHT AFTER AKOYA, FANNIE BAY

This modern top level one bedroom apartment at 1306/4 Kurringal Court, Fannie Bay presents an easy, low maintenance lifestyle within the sought after AKOYA complex, positioned in one of Darwin most admired coastal suburbs.

Set amongst quality amenities including a resort style swimming pool, barbecue areas, a residents community room and a fully equipped gym, the location also places you moments from the Darwin CBD, East Point Reserve, Nightcliff Foreshore, Darwin Turf Club, the airport, yacht club, schools, shopping and everyday conveniences.

### Property Highlights:

- Top level
- One spacious bedroom with walk through robe
- One bathroom with direct bedroom access
- One secure car parking bay
- Open plan living and dining opening to a private balcony
- Designer kitchen with stone benchtops and quality appliances
- Air conditioning throughout
- Soft carpets to the living area and bedroom
- Separate internal laundry

An ideal choice for first home buyers or investors seeking a quality apartment in a premium Fannie Bay setting, this AKOYA residence offers comfort, convenience, and long term appeal in one of Darwin most desirable locations.

### Additional Information:

- Year Built: 2016
- Body Corp Manager: North Management Body Corporate
- Total Body Corporate Fees (approx.): \$1400 per quarter
- Darwin City Council Rates (approx.): \$1800 per year

Contact me today at 0417508800 or [nicolewheeler@atrealty.com.au](mailto:nicolewheeler@atrealty.com.au) to schedule a private viewing and experience the beauty and convenience of this property for yourself.

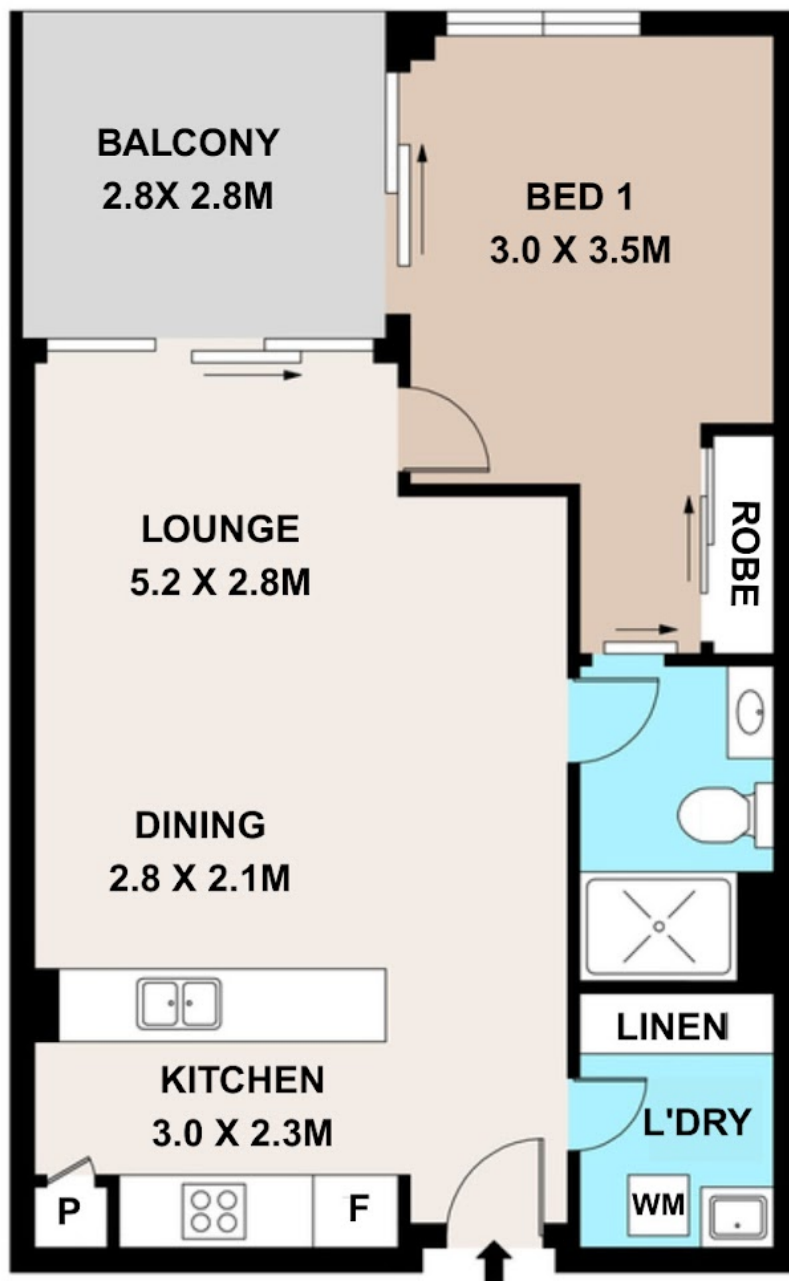
1 BED | 1 BATH | 1 CAR

PRICE:  
\$390,500

OPEN FOR INSPECTION:  
N/A



**Nicole Wheeler**  
**0417508800**  
[nicolewheeler@atrealty.com.au](mailto:nicolewheeler@atrealty.com.au)  
[www.atrealty.com.au](http://www.atrealty.com.au)



**1306/4 KURRINGAL COURT, FANNIE BAY, NT, 0820**

Disclaimer: Please note this floor plan is for marketing purposes and is to be used as a guide only. All dimensions are estimates only and may not be exact measurements.