



FOR SALE

AUCTION 28TH AUGUST 2PM (UNLESS SOLD PRIOR)

THIS HIDDEN GEM HAS FINALLY BEEN REVEALED!
Situating in the PRIME LOCATION of Croydon Park SA.
COLONIAL STYLE SOLID BRICK HOUSE! 704 SQM CORNER BLOCK! HIGH PITCHED CEILINGS!
WHAT MORE CAN YOU ASK FOR?

- Built in 1985
- High pitched ceilings for that open spaced feeling around the whole home.
- 3 bedrooms, Main bedroom with en-suite and walk in robe.
- 2 bathrooms.
- Huge front living area as you enter the home.
- Second living area (Rumpus) with double ceiling fans and combustion Fireplace for these cold winter nights.
- Solid timber flooring throughout.
- Kitchen with ample solid Timber cupboard space and gas cook stove.
- Heating and cooling Split system in bedrooms and living areas.
- Exposed brick interior walls and fireplace.
- Spacious front and rear yard for the kids to play.
- Verandah on the side of the house.
- Secure fencing
- Double auto Garage for secure parking.
- Extra self contained rumpus with split system at the back of the property or can be use as granny flat.
- Was previously use for a home salon.

Close to all amenities including:

- Croydon tafe
- Arndale shopping centre
- Churchhill Centre
- Costco
- public transport

3 BED | 2 BATH | 2 CAR

PRICE:

Need More Properties URGENTLY!!

OPEN FOR INSPECTION:

N/A



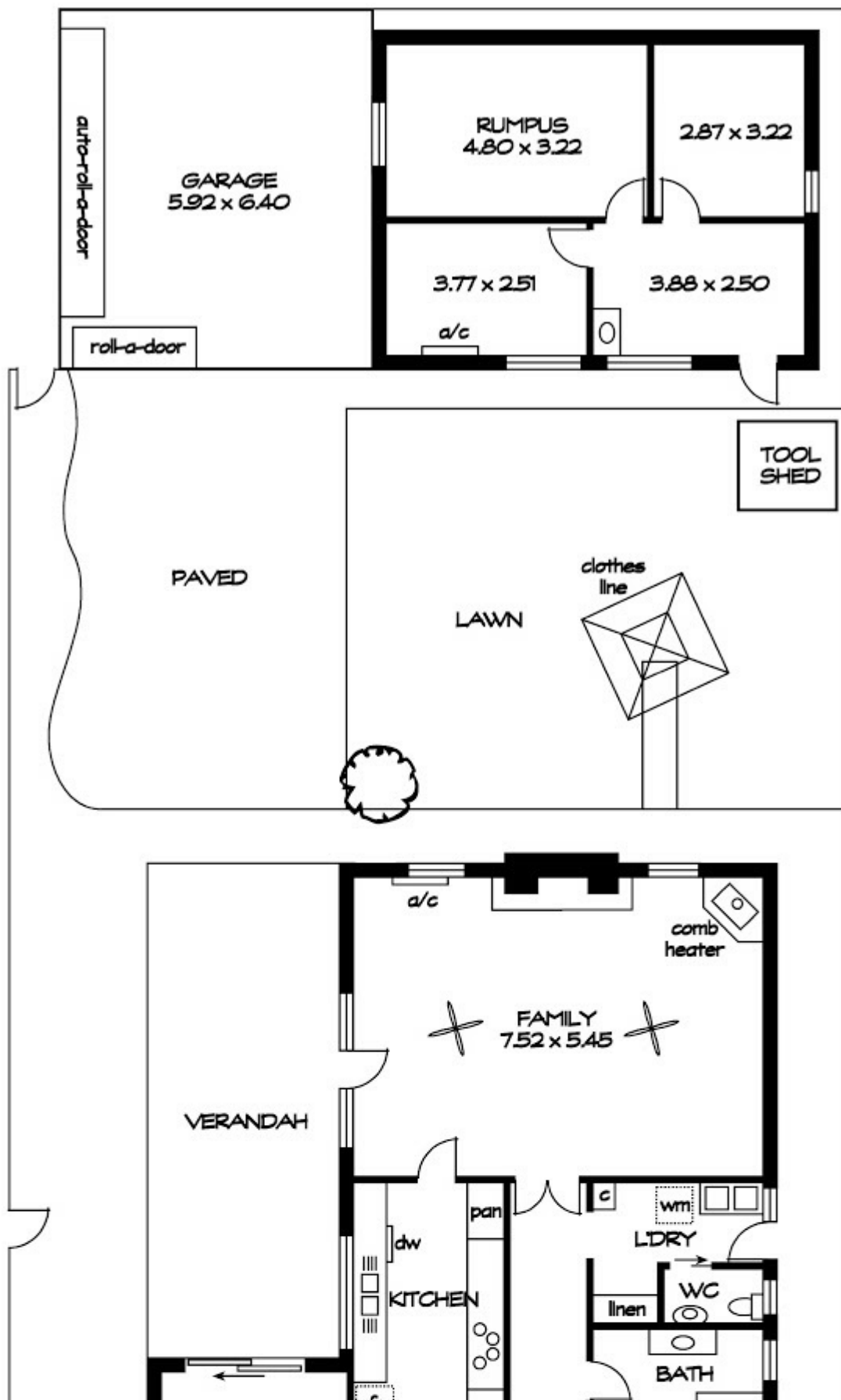
Minh Nguyen

0479070072

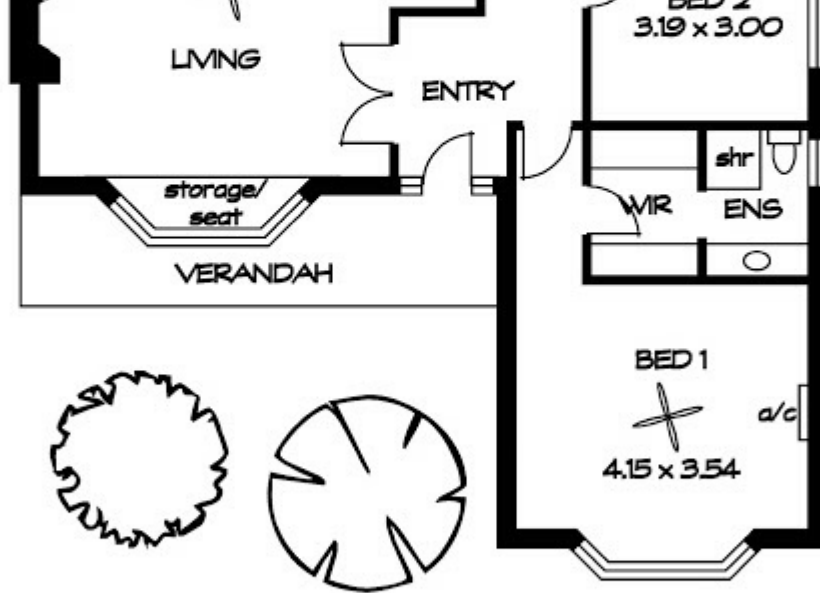
minh@atrealty.com.au

www.atrealty.com.au

RLA: 269823



Disclaimer: Please note this floor plan is for marketing purposes and is to be used as a guide only. All dimensions are estimates only and may not be exact measurements.



| AREAS (approx) | m ² |
|----------------|----------------|
| LIVING: | 198 |
| RUMPUS: | 50 |
| GARAGE: | 38 |
| VERANDAH: | 40 |
| TOTAL | 326 |