



**SOLD**

## STUNNING DUAL-LIVING HOME WITH WATER GLIMPSES & MASSIVE GARAGE – PRIME SUMMERLAND POINT LOCATION

Stunning Dual-Living Home with Water Glimpses & Massive Garage – Prime Summerland Point Location

Welcome to 9 Apanie Close, Summerland Point a versatile double-storey residence offering space, flexibility and water glimpses over Lake Macquarie.

Perfectly designed for extended families, in-laws, or those wanting dual living potential, this home features kitchens on both levels, generous living zones and seamless indoor-outdoor spaces.

Upstairs you'll find a spacious open-plan living and dining area with ducted air conditioning, flowing onto a large sunroom and balcony where you can soak in the lake views and coastal breezes. Three oversized bedrooms with built-in robes provide comfort and functionality for the whole family.

Downstairs offers its own kitchen, bathroom and living zone, making it ideal for in-laws, guests, or multi-generational living.

Car lovers, tradies, or boat owners will appreciate the huge high-ceiling approx 4 car garage, perfect for storing toys, tools, or creating a workshop space.

Features include:

- Double-storey home with water glimpses over Lake Macquarie
- Two kitchens – ideal for dual living or in-law accommodation
- Three large bedrooms with built-in robes
- Expansive sunroom and balcony
- Spacious upstairs living zone with ducted air conditioning
- Massive high-ceiling garage
- Flexible floorplan with multiple living areas
- Quiet cul-de-sac location

3 BED | 2 BATH | 4 CAR

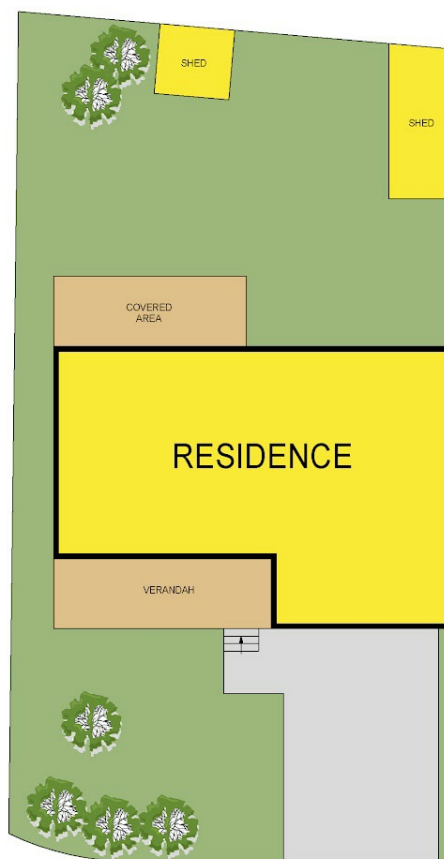
PRICE:  
\$900,000

OPEN FOR INSPECTION:  
N/A



**Brendan James**  
**0422851384**

brendanjames@atrealty.com.au  
[www.atrealty.com.au](http://www.atrealty.com.au)



9 Apanie Close  
Summerland Point



Total Internal Floor Area: 285 sqm

Scale in metres, indicative only. Dimensions are approximate. All information contained herein is gathered from sources we believe to be reliable. However we cannot guarantee its accuracy and interested persons should rely on their own enquiries



Disclaimer: Please note this floor plan is for marketing purposes and is to be used as a guide only. All dimensions are estimates only and may not be exact measurements.

**Brendan James**  
0422851384  
brendanjames@atrealty.com.au  
[www.atrealty.com.au](http://www.atrealty.com.au)

