

J. P. GREGSON & CO. AUCTIONEERS & SALES AGENTS – KINGARROY

SUMMIT VIEW ESTATE – KINGARROY

Choice Residential Allotment

154 Premier Drive, Kingarroy

RESIDENTIAL LAND – 4,972m² (APPROX. 1¼ ACRES)



PREMIER DRIVE

LOT 200
4,972 m²

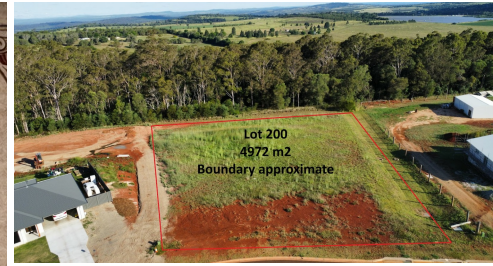
A SOUND AND WELL-LOCATED HOLDING ON THE EDGE OF TOWN

— For further particulars, apply to the agents —

J. P. GREGSON & CO., KINGARROY

A fine residential allotment, just minutes from the Kingarroy township.

- A gently sloping allotment in a well-established estate, surrounded by quality homes.
- Room for your dream home with ample space for sheds and gardens.
- Town water available, NBN connectivity, reliable mobile service.
- Remnant bushland at the rear.



SOLD

OVER AN ACRE OF RESIDENTIAL LAND ON THE EDGE OF KINGARROY

Set within Summit View Estate, just minutes from the centre of Kingarroy, this generous 4,972m² (1&1/4 acres) vacant residential lot offers the ideal foundation for your dream home.

Gently sloping and surrounded by quality modern homes, the land is perfectly suited to a quality build with room for a pool, sheds, and plenty of open space to enjoy.

Town water is available, along with NBN connectivity and full Optus and Telstra mobile coverage. Remnant bushland to the back of the block. A quality lot in a well-established estate.

Send an enquiry via the website, or text Julian, with your email to receive the Seller Disclosure Statement.

Offer Link (copy and paste to your browser):
<https://myatrealty.com/v2/properties/280248/listings/74842/submitofferform>

Note: Cover image is an AI generated artistic representation of the lot only, and should not be relied upon for accuracy.

0 BED | 0 BATH | 0 CAR

PRICE:
\$262,123

OPEN FOR INSPECTION:
N/A



Julian Gregson
0421577537
julian.gregson@atrealty.com.au
www.juliangregson.com.au



Disclaimer: Please note this floor plan is for marketing purposes and is to be used as a guide only. All dimensions are estimates only and may not be exact measurements.