



SOLD

CHARMING LAKESIDE LIVING

Perfectly positioned in a quiet, family-friendly street just moments from the Lake Illawarra foreshore, 56 Palmer Avenue offers relaxed living with an enviable lifestyle location moments to the lakeside reserve.

Set on a generous 557m² block with a welcoming street presence, the home features a comfortable and practical layout ideal for families, downsizers or investors alike. Inside, you'll find three great sized bedrooms, multiple light-filled living spaces, a central modern bathroom, kitchen & dining area that connects seamlessly to the outdoors. The separate family room opens to a lovely patio, creating a relaxed space to unwind or entertain while enjoying the coastal breeze. Outside you have a fully fenced and gated back yard for your privacy and security, while the detached 7m x 6m double garage offers excellent storage and parking options, or perhaps convert to a granny flat (STCA).

Step outside and enjoy the unbeatable lifestyle on offer, with Lake Illawarra and the reserve one street away, boasting walking tracks, parklands and water sports all seemingly right at your doorstep. Local shops, schools, transport and local amenities are all within easy reach.

If you're looking to secure a quality home in a prime, lakeside location, this home presents an outstanding opportunity in one of Kanahooka's most sought-after streets. Don't miss this amazing opportunity! Phone Peter Bullman today for more information.

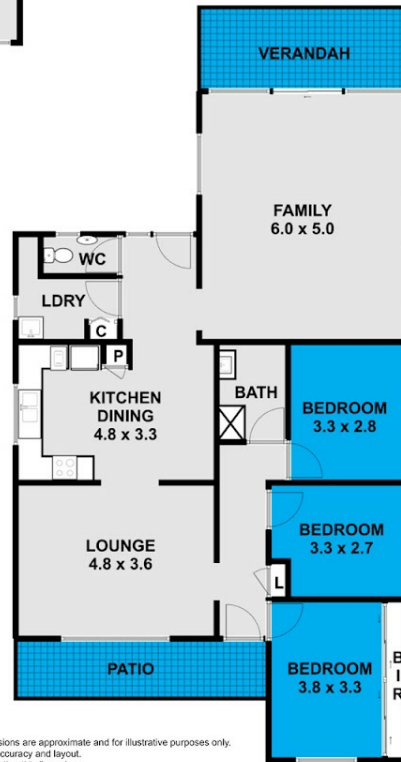
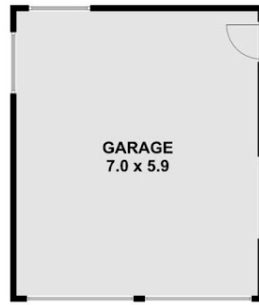
3 BED | 1 BATH | 2 CAR

PRICE:
\$945,000

OPEN FOR INSPECTION:
N/A



Peter Bullman
0401394394
peterb@atrealty.com.au
www.atrealty.com.au



This floor plan including furniture, fixture measurements and dimensions are approximate and for illustrative purposes only.
@Realty gives no guarantee, warranty or representation as to the accuracy and layout.
All enquiries must be directed to the agent, vendor or party representing this floor plan.

56 Palmer Avenue Kanahooka

Disclaimer: Please note this floor plan is for marketing purposes and is to be used as a guide only. All dimensions are estimates only and may not be exact measurements.