



FOR SALE

EXPERIENCE THE ENCHANTING CHARM OF THIS ONE-OF-A-KIND TIMBER HOME- TUMOULIN

Experience the enchanting charm of this one-of-a-kind timber home, designed to feel like a serene miniature cathedral retreat. From the moment you ascend the front stairs, a peaceful ambiance welcomes you onto a spacious front veranda perfect for relaxation. Inside, an open-plan dining, kitchen, and living area showcases beautiful timber flooring, bespoke kitchen benches, handcrafted lead-light windows, and expansive French doors that fill the space with fresh, natural light.

The elegant bathroom combines country charm and industrial flair with copper accents, carefully selected tiling, stunning lead-light windows, a large bathtub, and a walk-in open shower. The main living room impresses with soaring raked ceilings, majestic timber beams, and a cozy slow combustion fireplace, creating a warm and inviting atmosphere.

Retreat to the expansive master bedroom, flooded with natural light from floor-to-ceiling windows and opening onto the front veranda. A generous walk-in wardrobe completes this private sanctuary. Step onto the back veranda to take in tranquil eucalyptus forest views that provide natural privacy from neighbours.

An additional two-story standalone studio building, accessed via the back veranda, offers a versatile upper-level space perfect as an art studio or home office, complete with its own veranda. On the lower level, you'll find another room or bedroom, second bathroom, laundry with kitchenette plumbing, and direct veranda access.

Outside, enjoy a sustainable lifestyle with chicken shelters and above-ground gardens for organic growing. Two 20-ft containers with a pitched roof provide secure covered parking for two vehicles, alongside a removable container shed. The property benefits from mains power, a large rainwater tank, and bore water (unused by current owners) as they use the fresh rain water tank.

For privacy and personalized attention, inspections are by appointment only. Contact Vikki at 0472 910 300 to arrange your private viewing of this idyllic timber sanctuary.

2 BED | 2 BATH | 2 CAR

PRICE:

Offers Around 800,000

OPEN FOR INSPECTION:

N/A

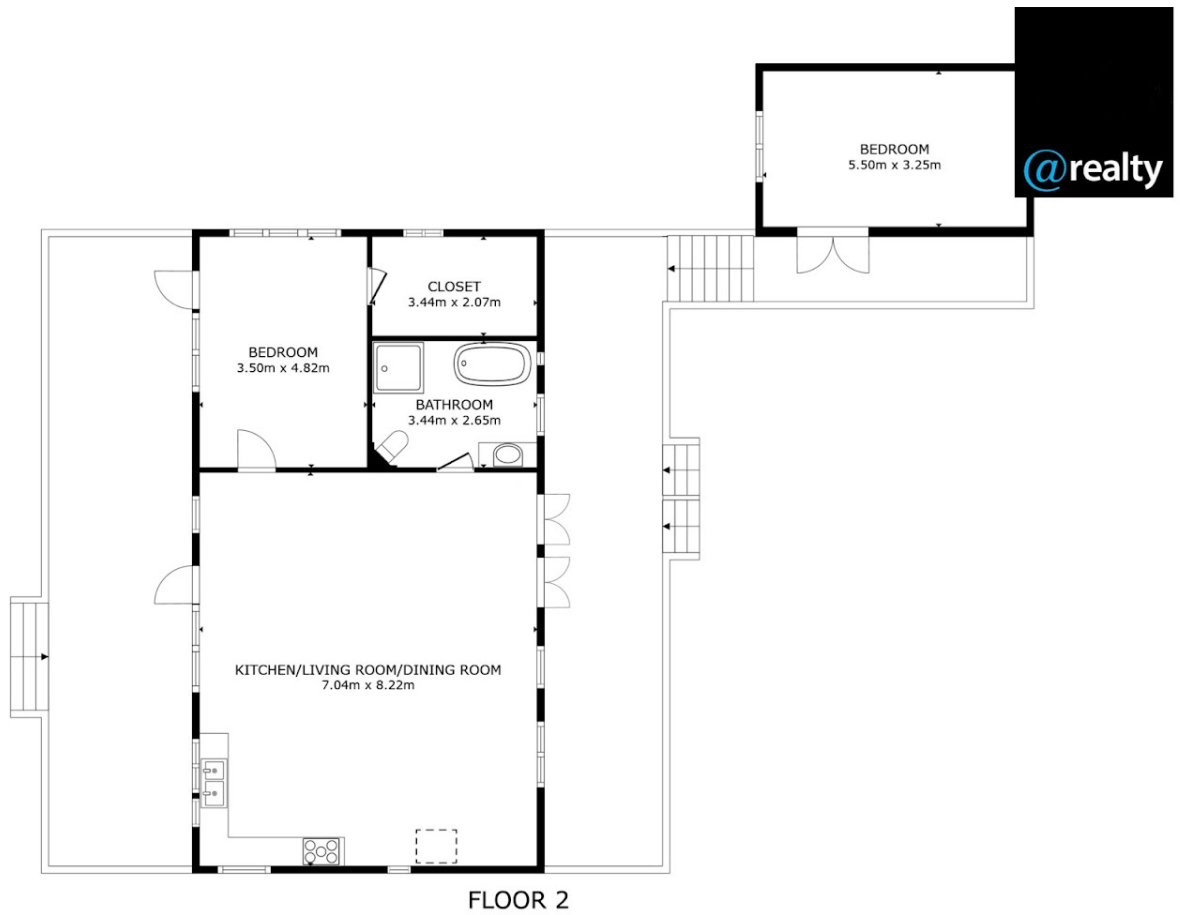


Vikki Burnett

0472910300

vikki@atrealty.com.au

www.atrealty.com.au



FLOOR 2

GROSS INTERNAL AREA
 FLOOR 1 17.5 m² FLOOR 2 110.2 m²
 EXCLUDED AREAS : TERRACE 8.9 m² TERRACE 41.1 m² TERRACE 34.1 m² TERRACE 10.1 m²
 TOTAL : 127.7 m²
 SIZES AND DIMENSIONS ARE APPROXIMATE, ACTUAL MAY VARY.



Disclaimer: Please note this floor plan is for marketing purposes and is to be used as a guide only. All dimensions are estimates only and may not be exact measurements.