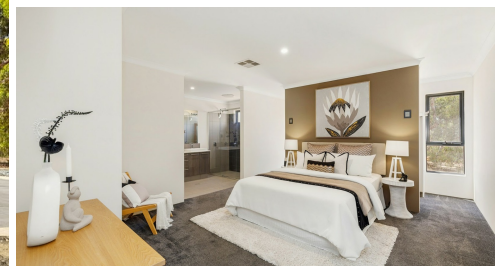


12 EURO COURT, CHITTERING, WA, 6084



FOR SALE

SECLUDED LUXURY ON 11.11 ACRES – NEAR-NEW LIFESTYLE LIVING

Rob Harwood @realty is excited to present 12 Euro Court, Chittering — a near-new lifestyle residence set on over 11 acres of fully fenced, private countryside. Positioned high on the hill and surrounded by native bushland, this stunning property offers space, comfort, and true seclusion for those seeking a premium rural escape without compromise.

Property Features Include:

- 4 generously sized bedrooms**, highlighted by a stunning master suite with a massive walk-in robe
- Built-in robes to bedrooms 2, 3 & 4
- 2 modern bathrooms including a luxurious ensuite with double basins and a double walk-in shower
- Secluded central study, ideal for a home office or additional storage
- Expansive open-plan living, seamlessly combining lounge and dining areas
- Stunning kitchen with oversized island bench, stone benchtops, 900mm freestanding oven, and dishwasher
- Full-size walk-in pantry and separate scullery, discreetly located behind the kitchen for added storage and food preparation
- Large games room, beautifully separated by elegant glass French doors
- Quality tiled flooring to living areas and soft carpet to bedrooms
- Ducted reverse-cycle air conditioning throughout
- Double lock-up garage
- Impressive alfresco dining area with built-in BBQ, perfect for entertaining
- 128,000-litre water tank
- Elevated 11.11-acre block, fully fenced and surrounded by native trees to enhance privacy and tranquillity
- Plans already drawn for a large shed, positioned within the approved building envelope

This exceptional property delivers the perfect balance of modern luxury and peaceful rural living — ideal for families, professionals, or anyone seeking space, privacy, and lifestyle.

4 BED | 2 BATH | 2 CAR

PRICE:

Offers from \$1,349,000

OPEN FOR INSPECTION:

N/A

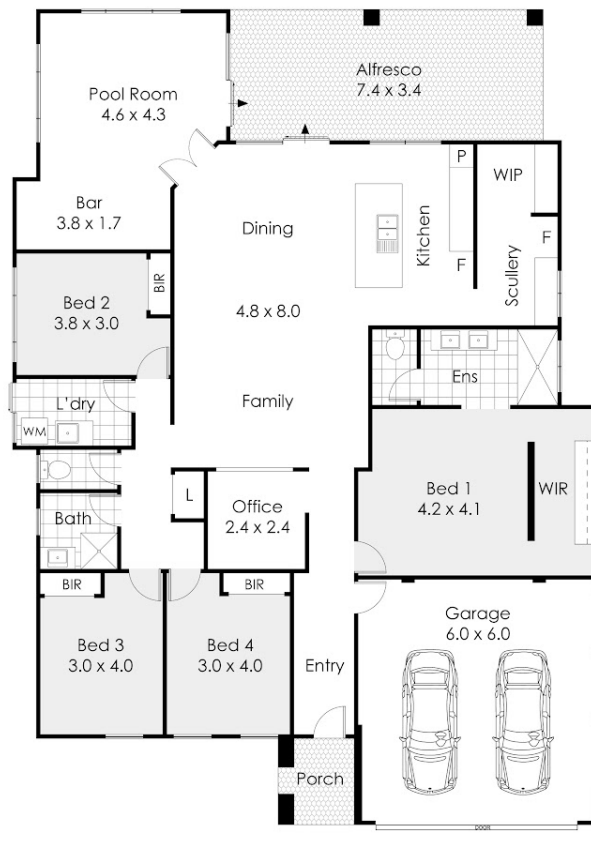


Rob Harwood

0411649625

robharwood@atrealty.com.au

www.robharwoodatrealty.com.au



12 Euro Court, Chittering

This floor plan is not to scale.
Dimensions are approximate and therefore should only be used for illustrative purposes.

	262 m ²
	4 Bed
	2 Bath
	2 Car

Disclaimer: Please note this floor plan is for marketing purposes and is to be used as a guide only. All dimensions are estimates only and may not be exact measurements.