

FOR SALE

RARE FIND, LARGE FAMILY HOME, HUGE SHED PLUS...

If you are looking for a good-sized high stud workshop/garage, then don't miss out, as sheds of these dimensions are seldom found on a residential site. Complete the picture with a generously sized family home on a 1005sqm section, all set in a quiet cul-de-sac location, offering plenty of parking, and a gorgeous bush backdrop for views, adventures and privacy.

There is so much on offer here, that it really is a "Must See" property to appreciate it all.

- Four spacious bedrooms
- Two bathrooms (including an ensuite)
- Two living areas that open onto the sun-soaked deck/entertaining area
- Modern kitchen, gas hot water, fireplace, DVS and air conditioner.
- Solar power, reducing the power bills
- Double internal garage plus huge garage for a motorhome/projects
- Extra-large storage areas/ hobby room.

If you are looking for a home that offers a lot, please get in touch for viewing details or check the advertised times. These owners are seriously for sale.

4 BED | 2 BATH | 3 CAR

PRICE:

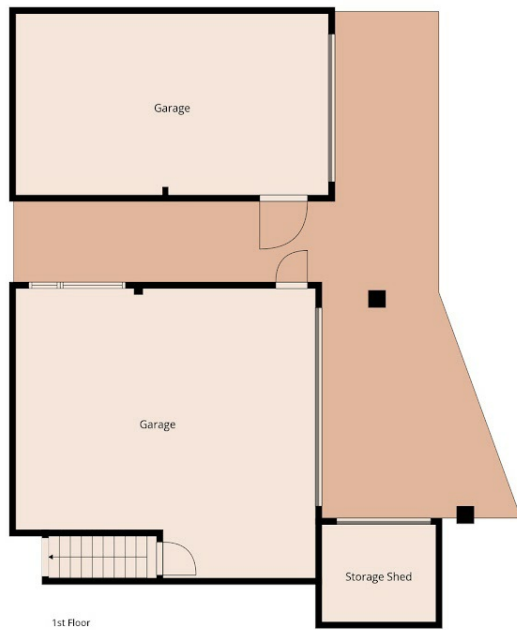
Asking price \$979,000

OPEN FOR INSPECTION:

Apr 19 at 1:15pm - 2:00pm



Julie Williams
0272998670
julie@realty.co.nz
Julie Williams Realty



THIS PLAN IS INDICATIVE ONLY. ACTUAL MAY VARY.

Disclaimer: Please note this floor plan is for marketing purposes and is to be used as a guide only. All dimensions are estimates only and may not be exact measurements.