



**SOLD**

## AS NEW SOUTHPORT TOWNHOME - NO BODY CORP FEES - 4BR, 2.5BA, 2 GARAGE

Welcome to 3/9 Louise Street, Southport, where modern townhome living meets the easygoing coastal lifestyle the Gold Coast is famous for. Set in a quiet pocket yet moments from the water, this as-new, four bedroom, two & a half bathroom townhome, offers space, comfort and unbeatable convenience — all with no body corporate fees.

Designed for relaxed everyday living, the home features a generous open-plan layout, perfect for families, professionals or those looking for a smart coastal investment. Light-filled interiors, built-in wardrobes and split-system air conditioning, ensure year-round comfort, while the modern kitchen with dishwasher makes entertaining effortless. A double lock-up garage plus additional car space completes the package.

Property highlights:

- \* No body corporate fees
- \* Four spacious bedrooms with built-in wardrobes
- \* Two modern bathrooms
- \* Additional separate powder room
- \* Double garage with internal access
- \* Split-system air conditioning
- \* Contemporary kitchen with dishwasher
- \* Pristine condition with low-maintenance living

Step outside and embrace the best of Southport's coastal lifestyle. Just minutes away, the Broadwater Parklands stretch over 3km of green open space with walking paths, picnic areas and a vibrant community atmosphere. Enjoy safe swimming at Ian Dipple Lagoon, sunset strolls along the Southport Pier and Rockpools, or weekend coffees overlooking the water.

Main Beach's golden sands are just to the south, while Sea World sits across the Broadwater on The Spit — perfect for family days out or visiting guests. Shopping and dining are a breeze with Australia Fair, the Southport CBD, and the cafés of Chinatown all close by, plus Harbour Town Premium Outlets only a short drive away.

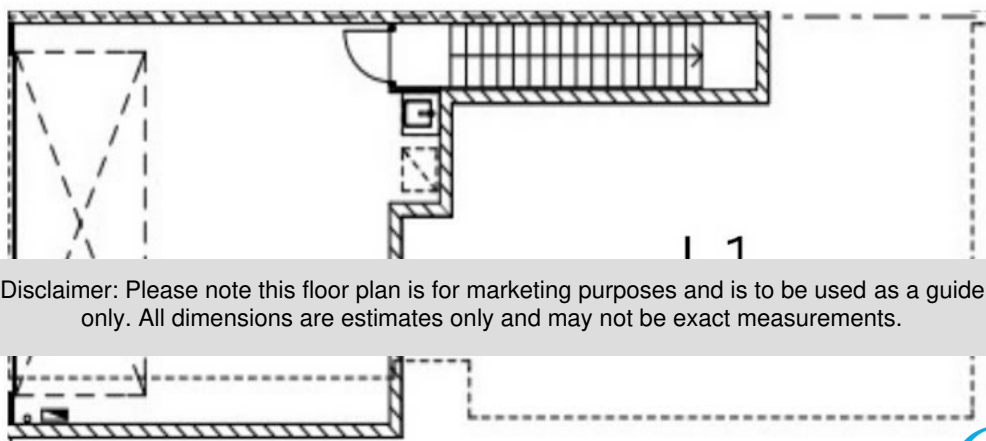
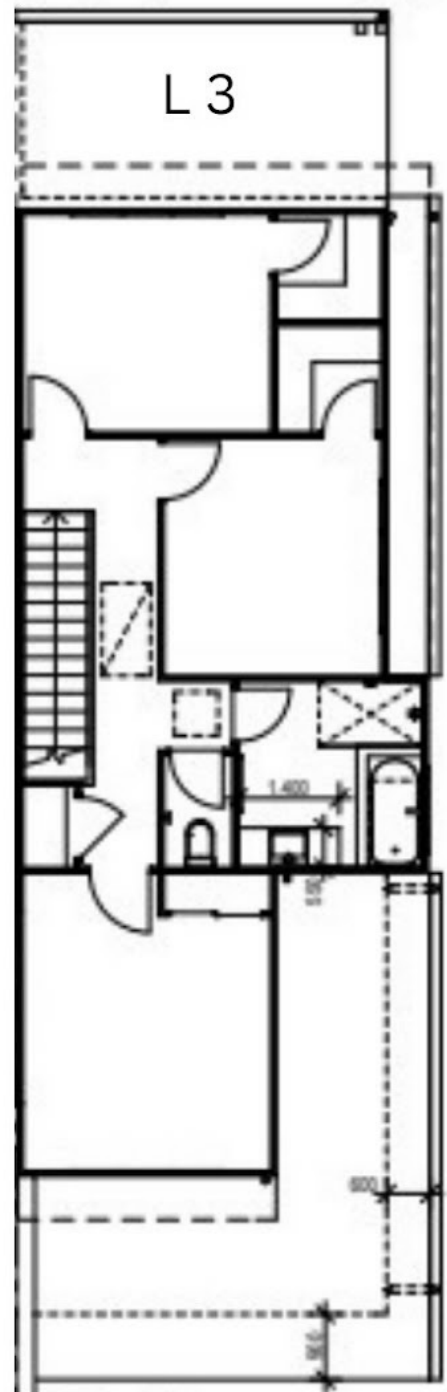
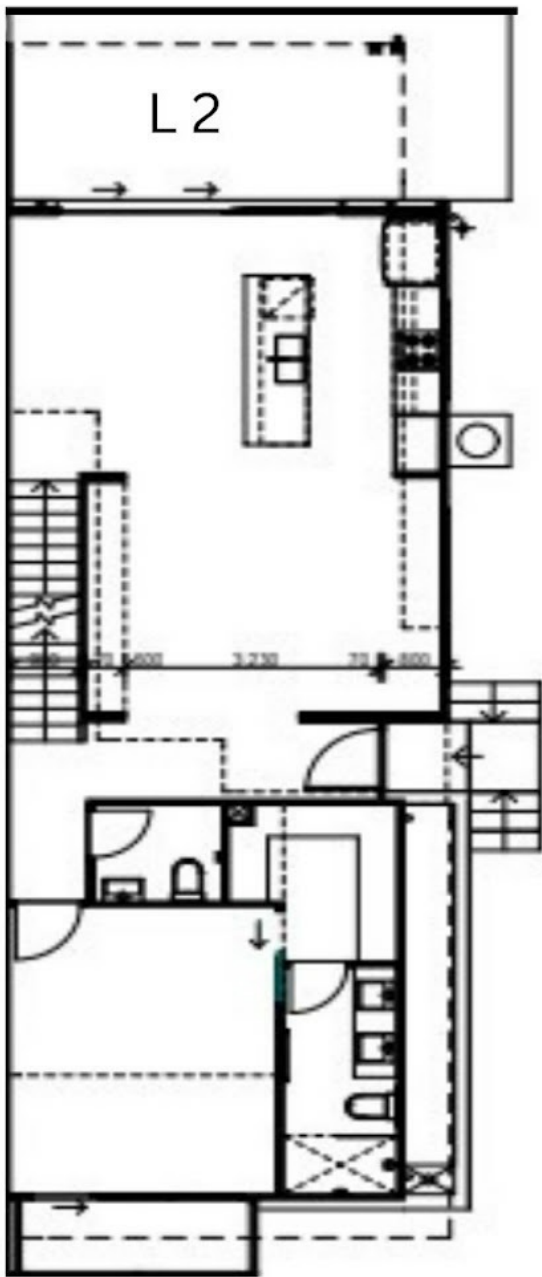
4 BED | 3 BATH | 2 CAR

PRICE:  
\$1,220,000

OPEN FOR INSPECTION:  
N/A



**Stephen Clynych**  
**0432555308**  
stephen.clynych@atrealty.com.au  
[www.atrealty.com.au](http://www.atrealty.com.au)



Disclaimer: Please note this floor plan is for marketing purposes and is to be used as a guide only. All dimensions are estimates only and may not be exact measurements.