



SOLD

CHARACTER, COMFORT, AND VERSATILITY

From the moment you step inside, this home wraps you in a warm embrace. This isn't just a house; it's a sanctuary where timeless character meets modern convenience. The layout is as flexible as your lifestyle requires, choose between two generous bedrooms and a separate, cosy lounge, or utilize the space as a three-bedroom retreat. Both main bedrooms are impressive in scale, featuring timber floors and original feature fireplaces that whisper stories of the past. Step into the open-plan kitchen and dining area, a space that perfectly balances heritage charm with modern living. While the stunning coal range steals the show, you'll love the contemporary finishes and the lovely sense of privacy, with windows framing peaceful views across the rear garden. Complemented by a modern heat pump in the hallway and ceiling and underfloor insulation for year-round comfort. The surprises continue downstairs with a versatile utility room, perfect for a home office, gym, or hobby space. Paired with a substantial workshop and ample storage. Step outside to a private, well-fenced rear section designed for sun-drenched summer BBQs and easy entertaining. With off-street parking and a location that puts Woolworths, local cafes, and the city centre within easy walking distance, you truly have the best of both worlds. Unique, well-cared-for gems like this are a rare find in today's market. Don't let this opportunity pass you by, seize the moment and make it yours! For sale by Deadline closing 17 February 2026 at 3pm, prior offers will be considered.

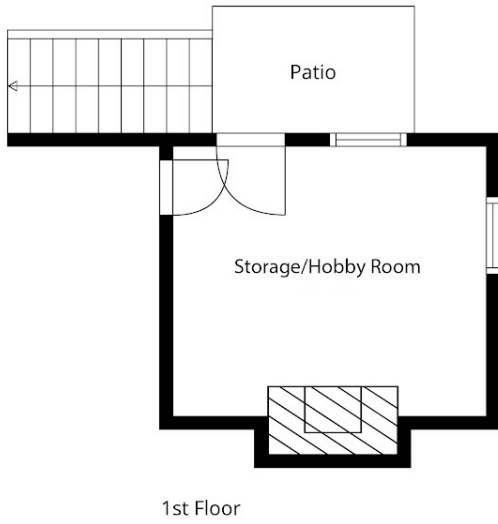
2 BED | 1 BATH | 0 CAR

PRICE:
\$416,000

OPEN FOR INSPECTION:
N/A



Tania Porteous
021476011
tania@thecollectiverealty.co.nz
www.thecollectiverealty.co.nz



Sizes And Dimensions Are Approximate, Actual May Vary

Disclaimer: Please note this floor plan is for marketing purposes and is to be used as a guide only. All dimensions are estimates only and may not be exact measurements.