

SOLD

SPACIOUS TOWNHOME IN WATERFRONT ESTATE WITH PRIVATE POOL

Positioned within the sought-after Lyra Estate, this impressive townhome offers one of the largest floor plans in the community, delivering an exceptional lifestyle opportunity for downsizers, upgraders, or young families seeking space to grow.

Showcasing 241sqm of open-plan living across two generous levels, the home is designed for effortless entertaining and relaxed everyday living. Premium finishes and thoughtful design elements are featured throughout, complemented by abundant natural light and cooling breezes.

Townhome Features

- One of the largest floor plans in Lyra Estate with approx. 241sqm of living
- Expansive open-plan living and dining flowing seamlessly to a spacious courtyard
- Modern chef's kitchen with oversized Caesarstone benchtops and quality SMEG appliances, including gas cooktop
- Master retreat with double vanity ensuite, his-and-hers walk-in robes, and a private balcony.
- Multi-purpose room or fourth bedroom, ideal for guests or a home office
- Additional study and welcoming entrance area
- 2.7m high ceilings across both levels
- Quality engineered timber flooring and window furnishings throughout , Automatic blinds
- Ducted air conditioning for year-round comfort
- Separate laundry with additional storage
- Abundant natural light with excellent cross-ventilation

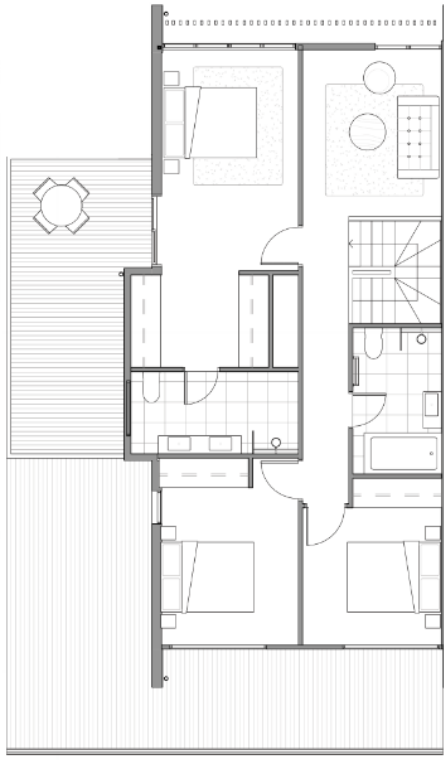
3 BED | 2 BATH | 2 CAR

PRICE:
\$1,300,000

OPEN FOR INSPECTION:
N/A



Clyde Lin
0459388222
clyde@atrealty.com.au
www.atrealty.com.au



TYPE MQ02

**3 BED, 2.5 BATHROOMS,
1 MULTI PURPOSE ROOM,
2 CAR**

AREA DETAIL	
GROUND	71m ²
LEVEL 1	84m ²
EXTERNAL	45m ²
GARAGE	41m ²
TOTAL	241m ²



The information and images in this document are intended as an introduction to the general content of the project only and interested parties should rely on their own enquiries. The Developer, its officers, employees, subcontractors, agents and related bodies corporate expressly disclaim any liability and responsibility (except to the extent that liability under statute or by operation of law cannot be excluded) to any person for any loss, liability, damage or expense arising directly or indirectly from or connected in any way with any use of or reliance on the information contained within this document. All computer generated images in this document are artist's impressions only and the final form of the project is subject to change.



Disclaimer: Please note this floor plan is for marketing purposes and is to be used as a guide only. All dimensions are estimates only and may not be exact measurements.

Clyde Lin
0459388222
 clyde@atrealty.com.au
www.atrealty.com.au

